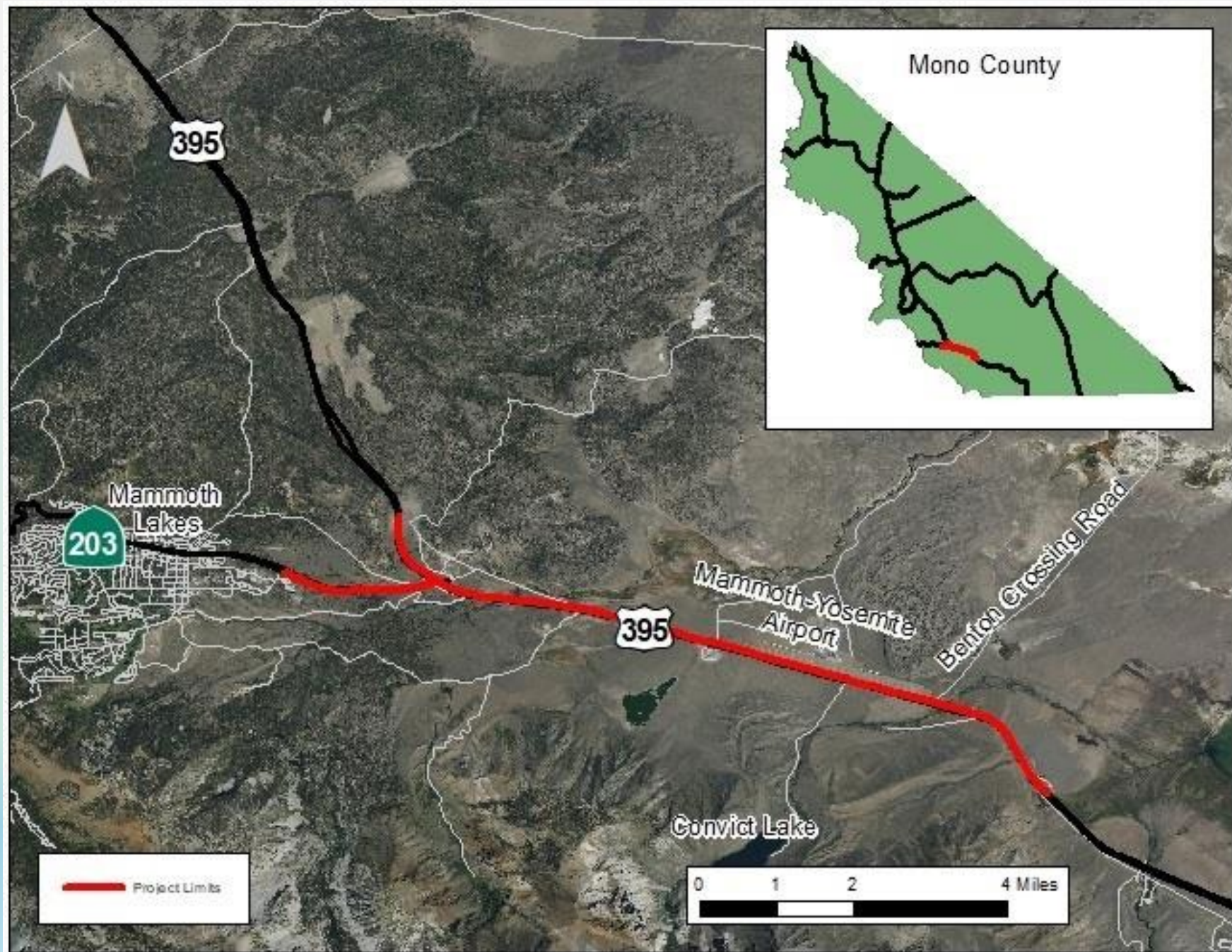




Mammoth Lakes US 395 Wildlife Crossing Project



Katie Rodriguez
Biology Branch Chief
Environmental Unit
District 9



Eastern Sierra Wildlife Stewardship Team

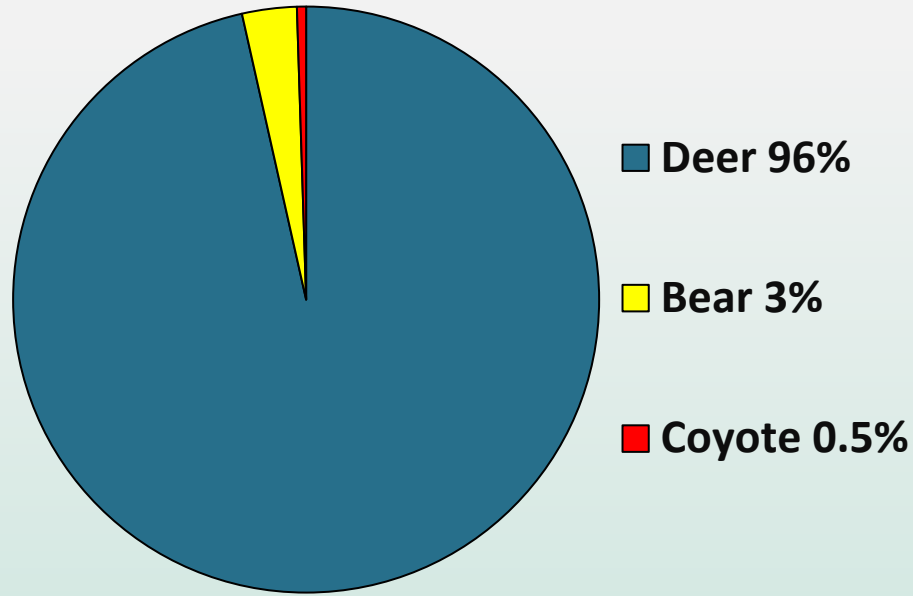


Project Background and Current Status

- 2016- Caltrans completed Feasibility Study Report
- Completed the Scoping Phase in June 2020
 - Finalized Project Study Report (PSR)/Project Initiation Document (PID)
- Funding
 - Caltrans funded the scoping phase (PID Phase)
 - No Caltrans dedicated funding for PA&ED (Environmental), PS&E (Design) or Construction phases
 - CEQA/NEPA document: visual, cultural, and biological studies needed (\$\$)
 - Wildlife Conservation Board Prop. 68 Grant
- D9 Roadkill Database- 2019 Upgrade with Survey 123
- CDFW Graduate Thesis Project- completion anticipated Spring 2022



Percentage of Recorded WVC's (N = 872) By Species U.S. Hwy 395, Mono County (2015-2020)



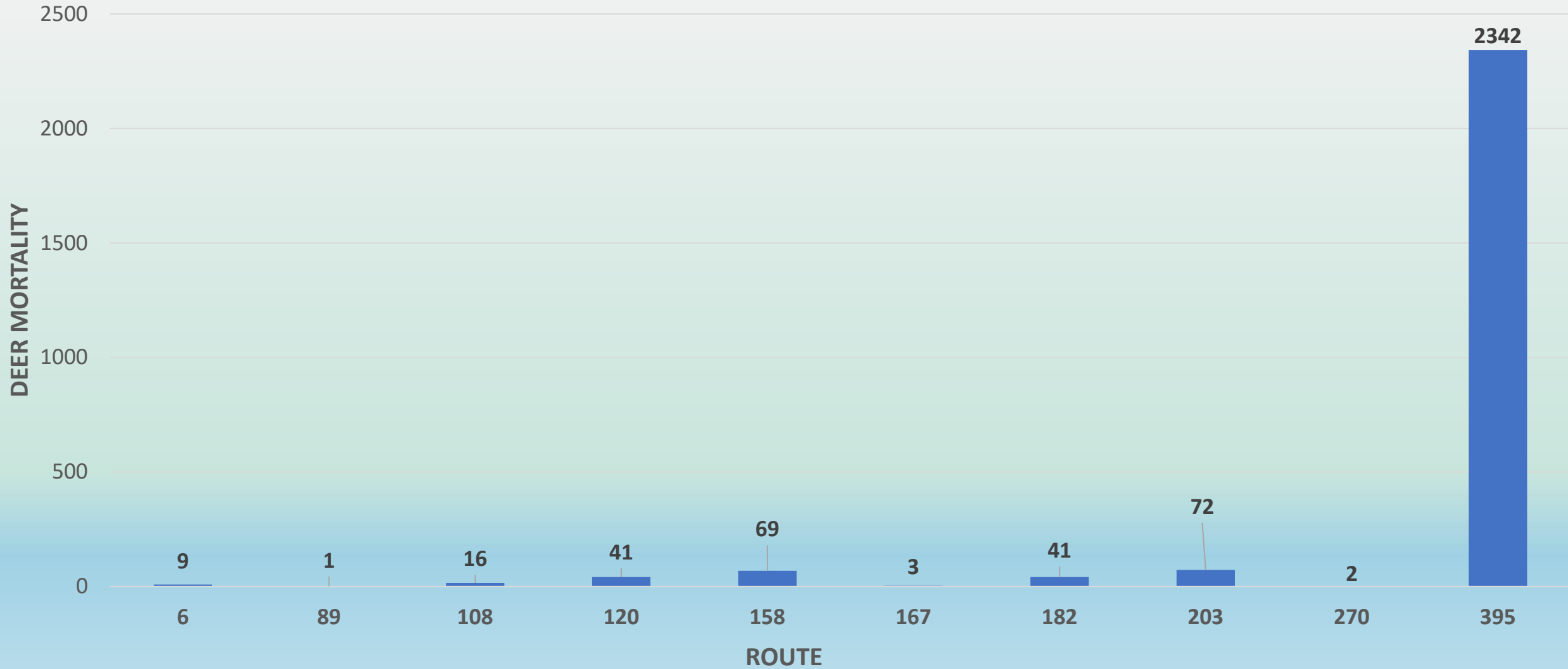
All other species make up <0.5% of reported wildlife-vehicle collisions



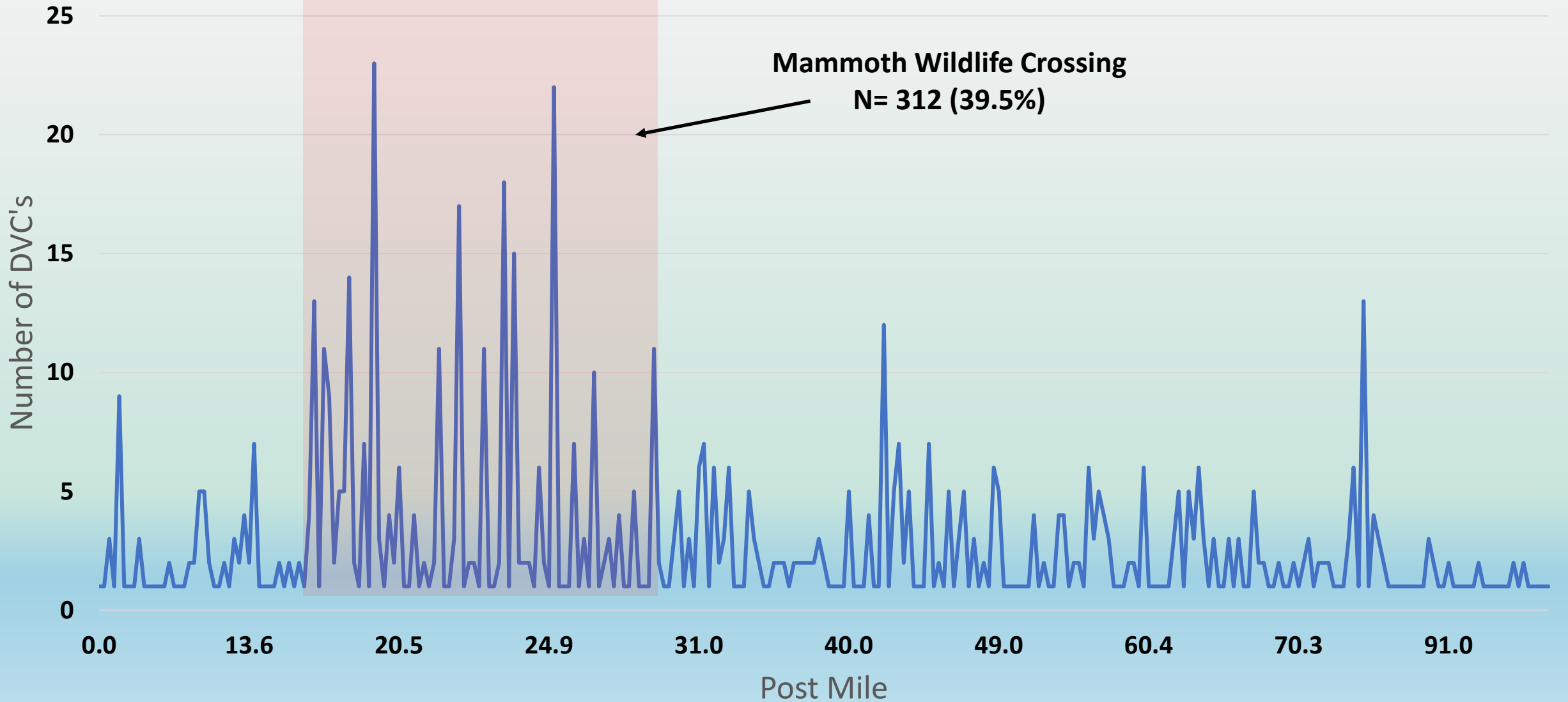
MONO CO TOTAL DEER MORTALITY BY ROUTE

2002-2020

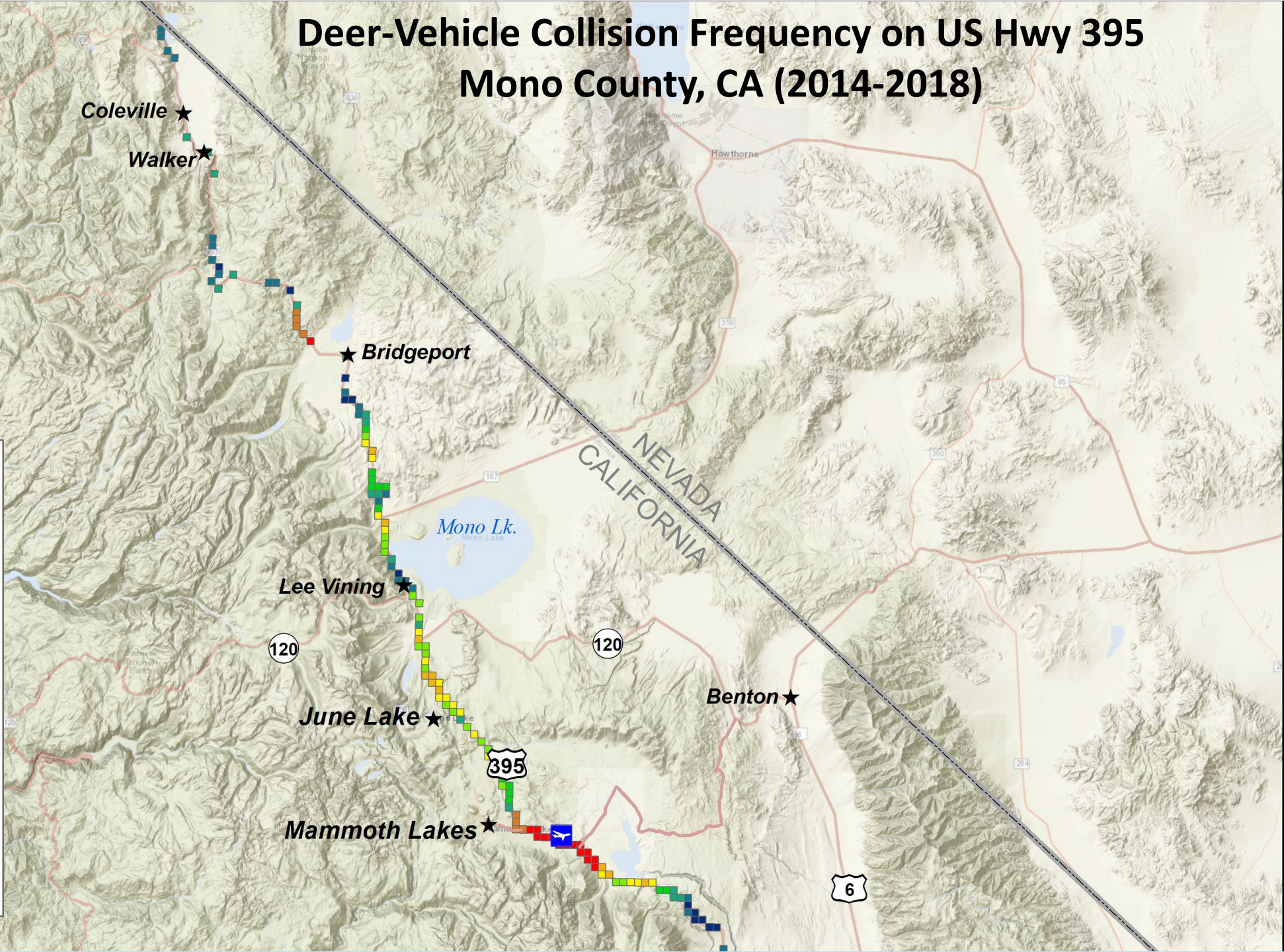
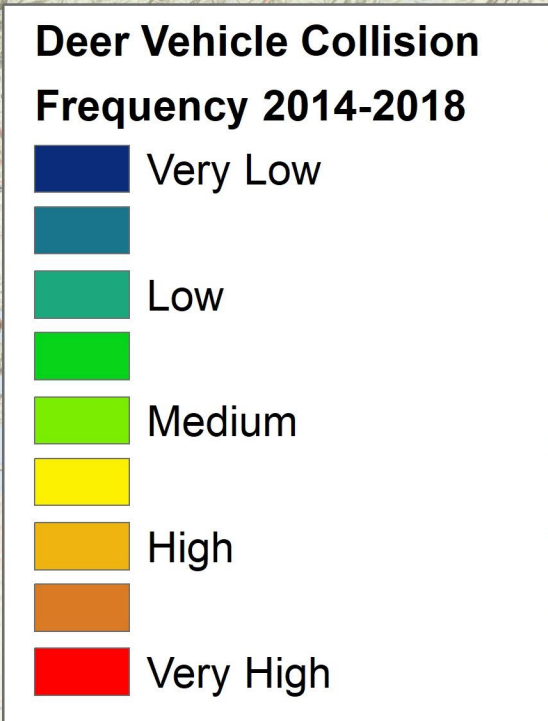
Total Deer Mortality = 2,596



**Number of Deer-Vehicle Collisions (N= 790)
U.S. Highway 395 (PM 01 - PM 120)
Mono County, CA (2015-2020)**



Deer-Vehicle Collision Frequency on US Hwy 395 Mono County, CA (2014-2018)



Deer Vehicle Collision Hot Spots on Hwy 395 Mono County, CA

Hot Spot Analysis 2014-2018
Deer Vehicle Frequency

Very Low
Low
Medium
High
Very High

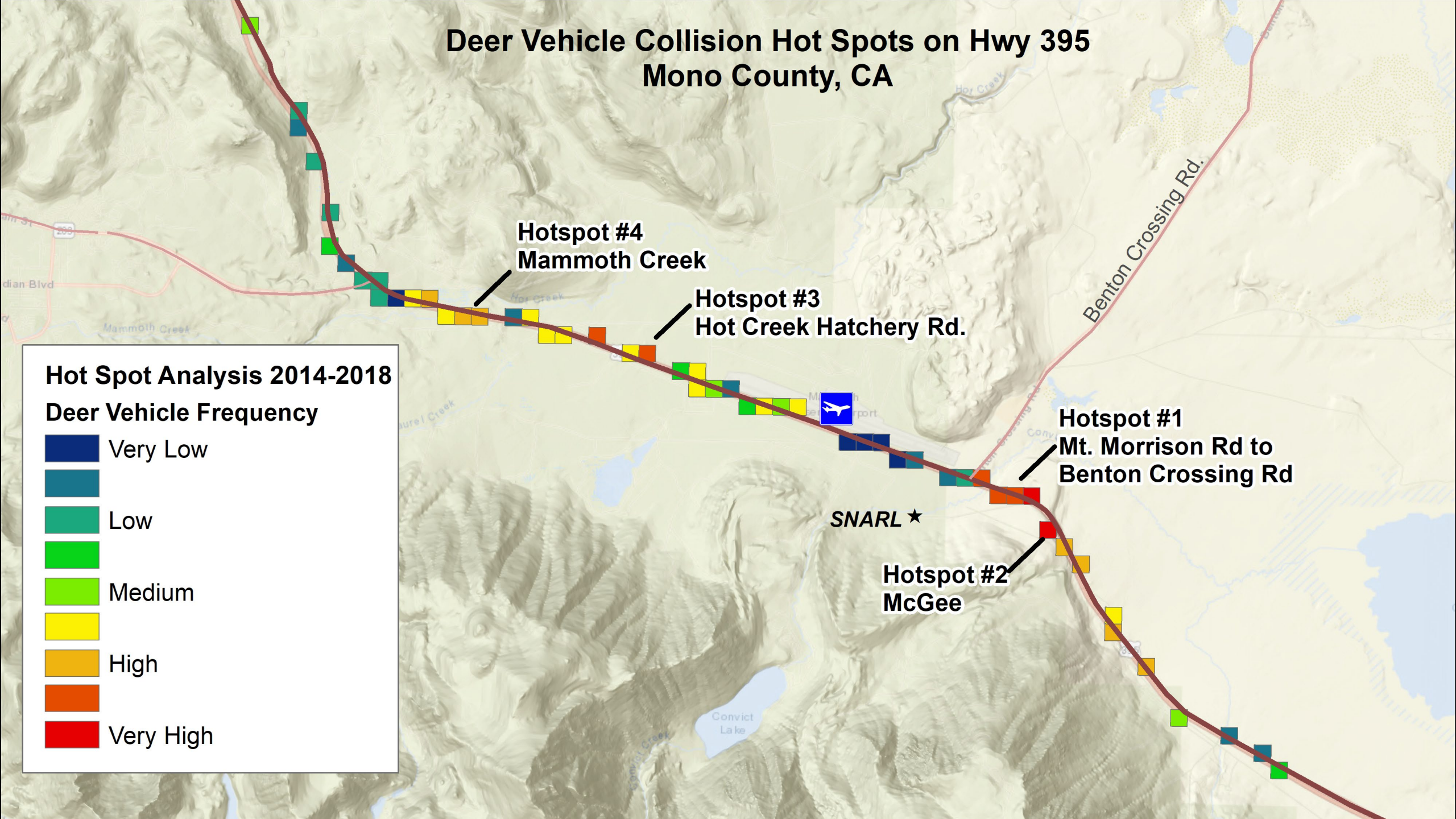
Hotspot #4
Mammoth Creek

Hotspot #3
Hot Creek Hatchery Rd.

Hotspot #1
Mt. Morrison Rd to
Benton Crossing Rd

Hotspot #2
McGee

SNARL ★



Concept 1 \$53.3 million

- 18 miles of fencing on 395 and 203
- 4 new crossing structures on 395
- 1 new crossing structure on 203
- Mammoth Creek wildlife crossing improvements

★ Mammoth Lakes

203

Mammoth Crk.
Existing undercrossing

Airport

Benton Crossing Rd.

Convict Crk.
New Bridges

★ SNARL

- Wildlife Fencing
- New Large Mammal Overcrossing
- New Medium Mammal Undercrossing or Overcrossing
- New Large Mammal Undercrossing
- Existing Undercrossing Improvements

Concept 2 - 395 Only

\$41.6 million

- 13 miles of fencing on 395
- 4 new crossing structures on 395
- Mammoth Creek wildlife crossing improvements

★ Mammoth Lakes

203

Mammoth Crk.
Existing undercrossing

Airport

Benton Crossing Rd.

Convict Crk.
New Bridges

★ SNARL

Legend:

- Wildlife Fencing
- New Large Mammal Overcrossing
- New Medium Mammal Undercrossing or Overcrossing
- New Large Mammal Undercrossing
- Existing Undercrossing Improvements

Concept 3 \$33.6 million

- 13 miles of fencing on 395
- 4 new crossing structures on 395
 - 3 Large mammal, 1 medium mammal
- Mammoth Creek wildlife crossing improvements

★ **Mammoth Lakes**

(203)


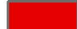



Mammoth Crk.
Existing undercrossing

Airport

Benton Cr. Rd.

Convict Crk.
New Bridges

★ **SNARL**

	Wildlife Fencing
	New Large Mammal Overcrossing
	New Medium Mammal Undercrossing
	New Large Mammal Undercrossing
	Existing Undercrossing Improvements

Concept 4 - North Only

\$16.9 million

- 8 miles of Fencing on 395
- 2 new crossing structures
- Mammoth Creek wildlife crossing improvements

★ Mammoth Lakes

203

Mammoth Crk.
Existing undercrossing

Airport

Benton Crossing Rd.

★ SNARL

- Wildlife Fencing
- New Large Mammal Overcrossing
- New Medium Mammal Undercrossing
- Existing Undercrossing Improvements

Concept 5 - South Only

\$18.5 million

- 7 miles of fencing on 395
- 2 new crossing structures on 395
- Focus on largest hot spots

★ **Mammoth Lakes**

203

395

Airport

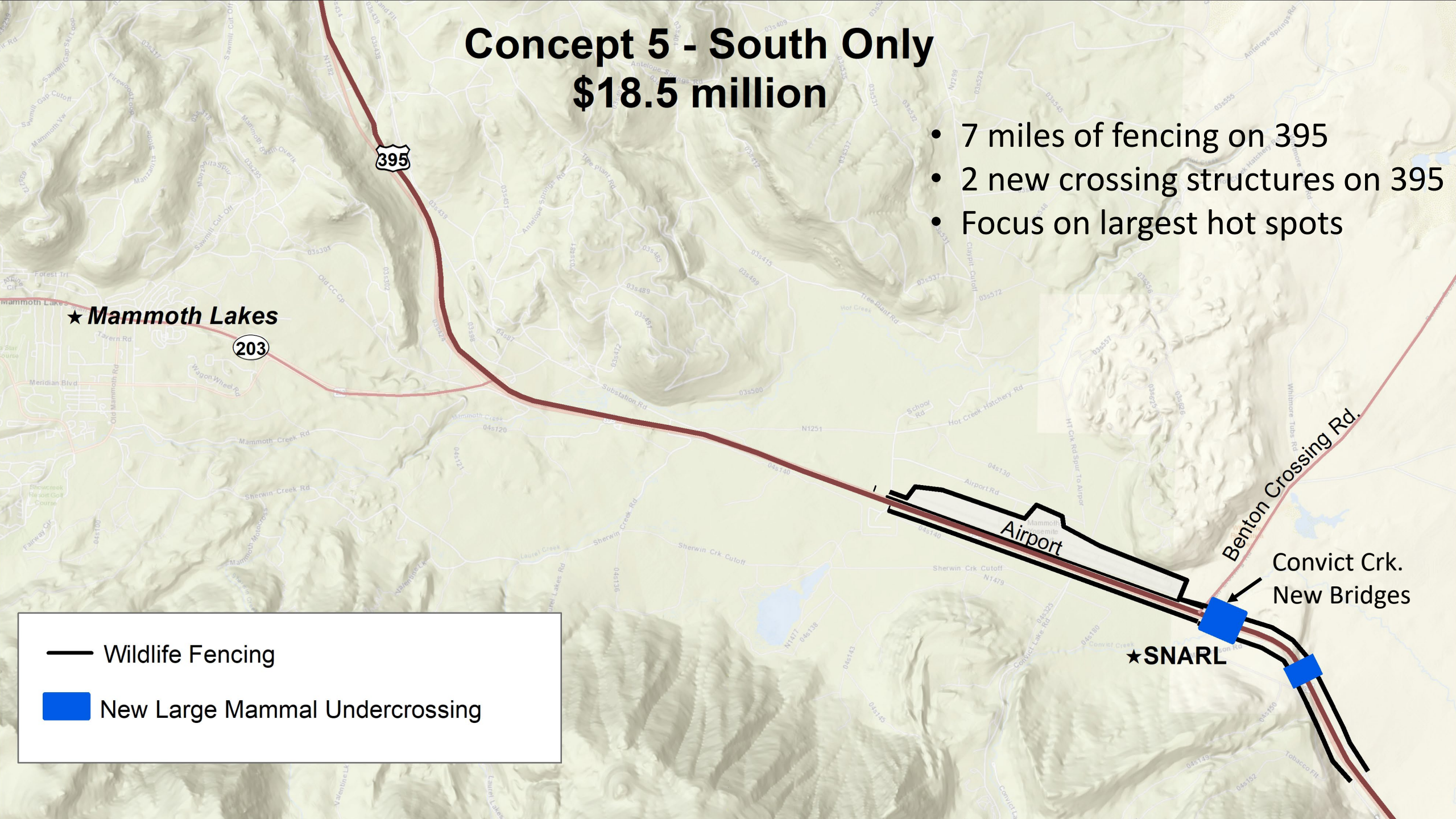
Benton Crossing Rd.

**Convict Crk.
New Bridges**

★ **SNARL**

— Wildlife Fencing

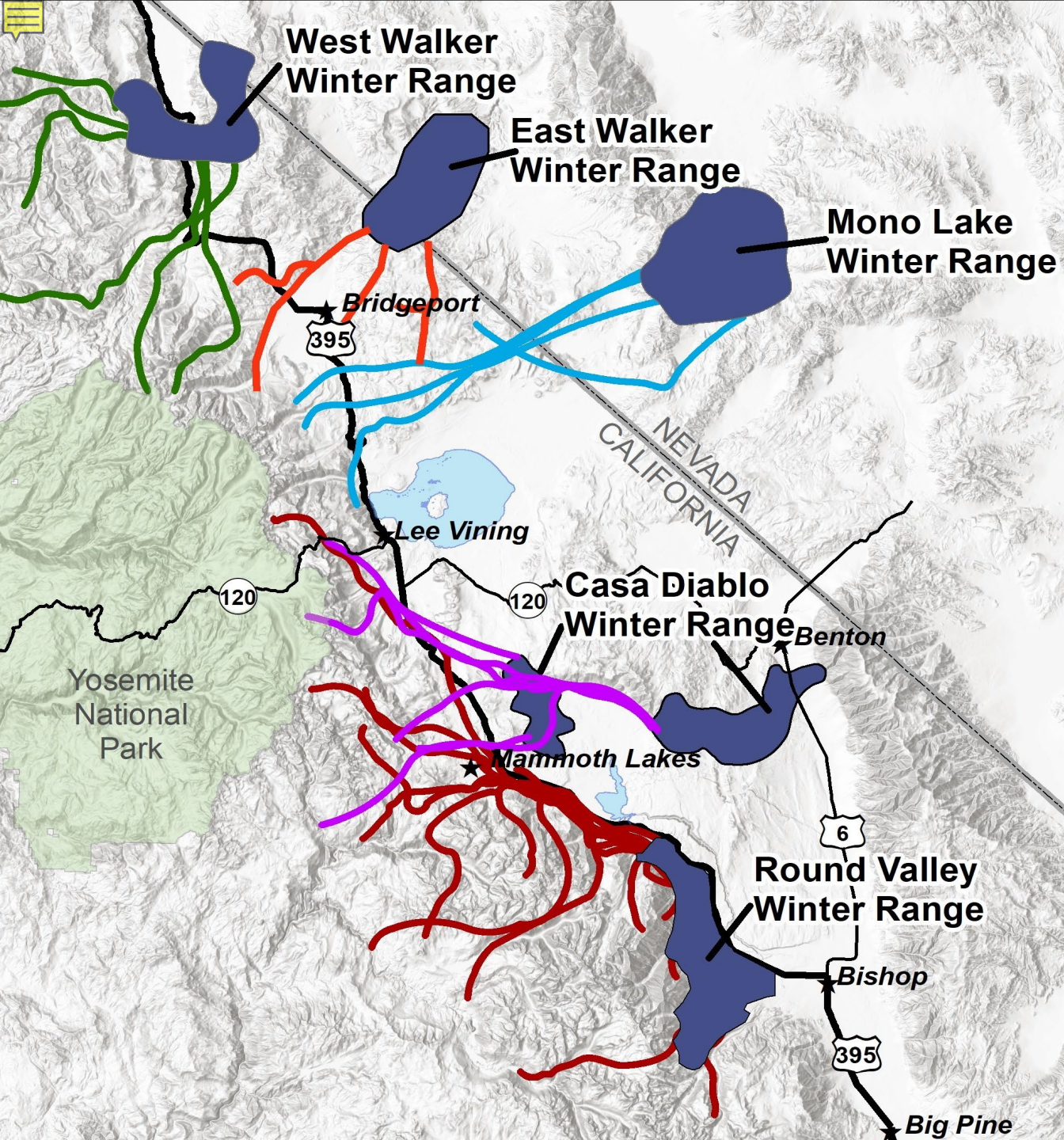
■ New Large Mammal Undercrossing



CDFW Graduate Thesis Study

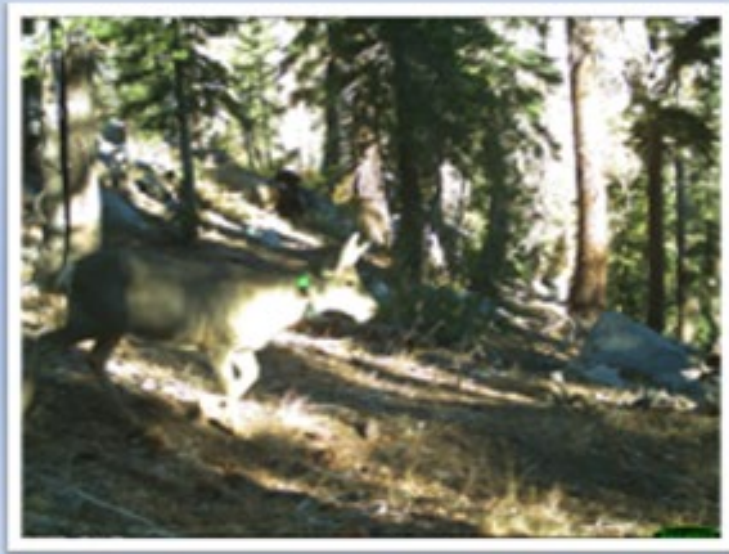
- CDFW initiated wildlife crossing study in spring 2019
- Primary Objectives:
 - Identify and map wildlife-highway crossings
 - Propose targeted mitigation to reduce WVC's
- Mapping effort facilitated by DOI Secretarial Order 3362
- CDFW and Caltrans used a multiple data source study approach:
 - GPS Collars
 - Camera Traps
 - Wildlife-Vehicle Collision Surveys



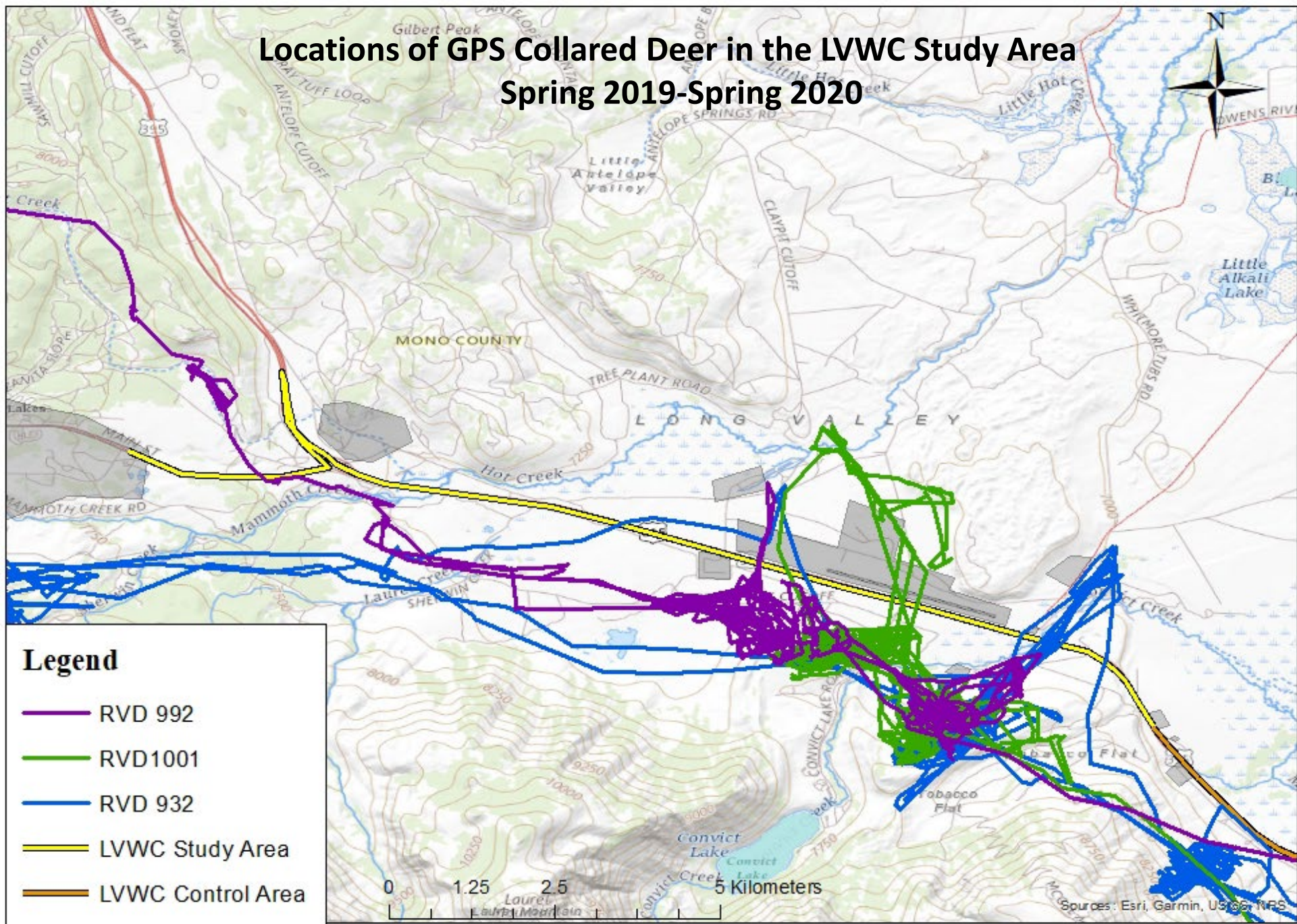


Mono County Mule Deer Migration

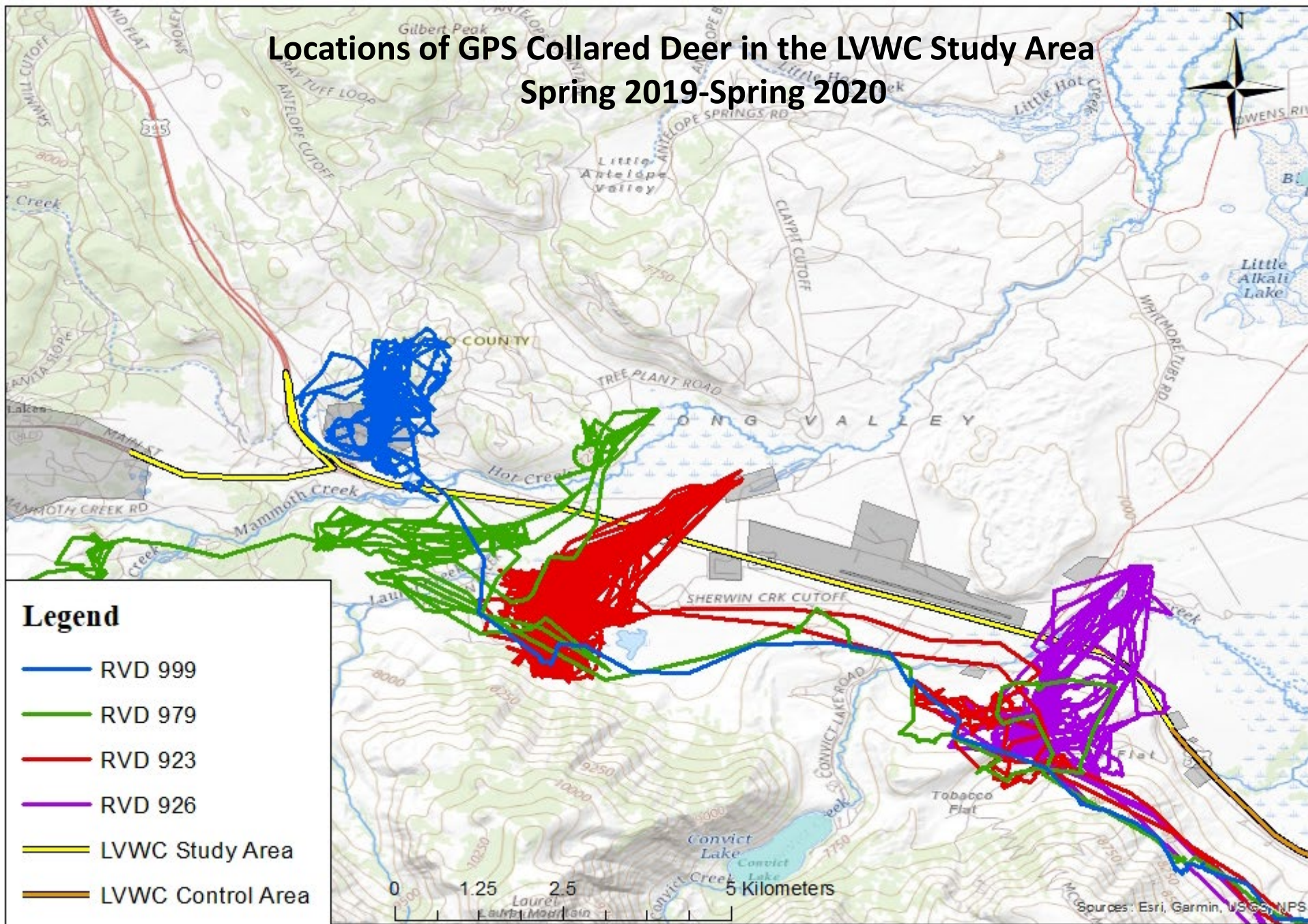
- Five migratory mule deer herds
- Migration occurs 2X annually along traditional routes
- Migration routes connect seasonal ranges
 - Winter range
 - Summer range
 - Stopover areas
- All migration routes bisect US 395

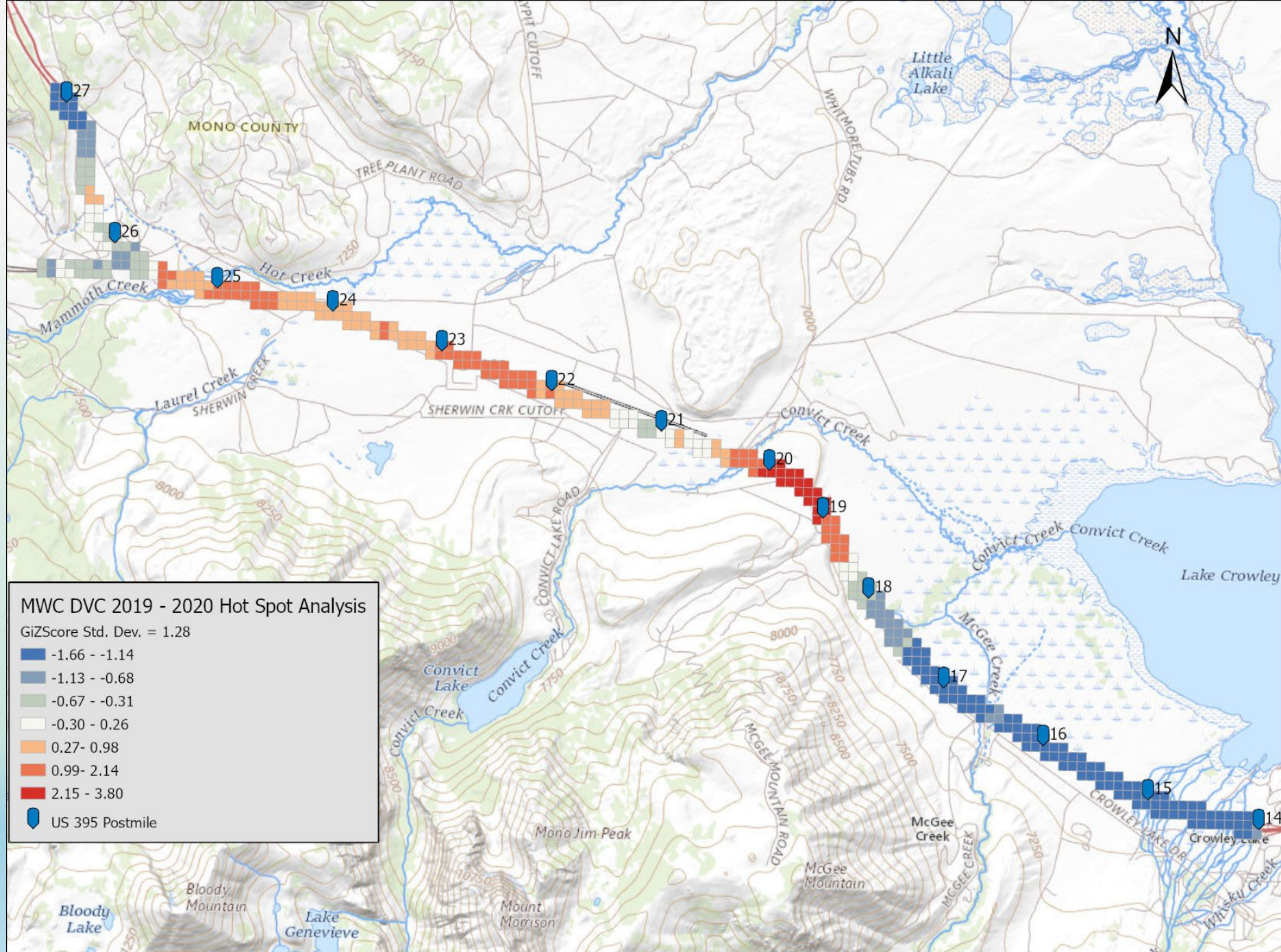


Locations of GPS Collared Deer in the LVWC Study Area Spring 2019-Spring 2020



Locations of GPS Collared Deer in the LVWC Study Area Spring 2019-Spring 2020














WCB Grant- Prop. 68

- 2019- Applied
 - Full Proposal Requested by WCB
 - Requested: \$3,357,000; PA&ED & PS&E for Concept 1
 - **Unsuccessful**
- 2020- Applied
 - Pre-Application only; full proposal not requested
 - Requested: \$2,972,000; PA&ED only for Concept 1
 - **Unsuccessful**
- 2021- Applied
 - Full Proposal Requested by WCB
 - Requested: \$914,000; PA&ED for Concept 5
 - **Approved**



Wildlife Conservation Board
Wildlife Corridor and Fish Passage Program
2021 Public Solicitation Notice



Next Steps

- Wildlife Conservation Board Grant (Prop. 68)- submitted pre-proposal on Oct. 5, 2021 for Concept 5
 - On Dec. 20, 2021 received **confirmation** of funding
 - July 2022- **WCB requested updated estimate for Concept 1 (\$2.8 million- PA&ED)**
 - Nov. 2022 Board meeting to confirm funding
 - Start studies in Spring 2023
 - Continue working with ESWST to find additional funds (private, grants) for future phases
- Future Funding?
 - Infrastructure Bill; SB790; Advanced Mitigation (RCIS/MCS)



Questions?
Katie.Rodriguez@dot.ca.gov

