

# Mono County Local Transportation Commission

---

PO Box 347  
Mammoth Lakes, CA 93546  
760.924.1800 phone, 924.1801 fax  
[commdev@mono.ca.gov](mailto:commdev@mono.ca.gov)

PO Box 8  
Bridgeport, CA 93517  
760.932.5420 phone, 932.5431 fax  
[www.monocounty.ca.gov](http://www.monocounty.ca.gov)

## MEETING AGENDA

December 14, 2020 – 9:00 A.M.

As authorized by Gov. Newsom’s Executive Orders, N-25-20 and N-29-20, the meeting will be accessible remotely by live cast with Commissioners attending from separate remote locations. There is no physical meeting location. This altered format is in observance of recent recommendations by local officials that certain precautions be taken, including social distancing, to address the threat of COVID-19.

You are strongly encouraged to observe the live stream of the LTC at  
[http://monocounty.granicus.com/MediaPlayer.php?publish\\_id=06f8988d-fd54-4eb7-aaaf-0757cb6fa034](http://monocounty.granicus.com/MediaPlayer.php?publish_id=06f8988d-fd54-4eb7-aaaf-0757cb6fa034)

The meeting may be joined by video at

<https://monocounty.zoom.us/j/99020859881?pwd=R2E5T0owS0pEV0pCTlliOHhxcU9qUT09>

and by telephone at: 669-900-6833 (Meeting ID: 990 2085 9881, Passcode: 1234) where members of the public shall have the right to observe and offer public comment.

An alternate method to access the video meeting is <https://zoom.us/join> and enter Meeting ID: 990 2085 9881 and Passcode: 1234.

### 1. CALL TO ORDER & PLEDGE OF ALLEGIANCE

- A. Meeting procedures and format (*Gerry LeFrancois*)

### 2. PUBLIC COMMENT

### 3. MINUTES

- A. Approval of minutes from October 19, 2020 **p.1**

### 4. LOCAL TRANSPORTATION

- A. Resolution of Appreciation for Commissioner Stump’s service on the LTC (*Gerry LeFrancois, Staff & Commission*) **p.4**
- B. Update on development of a region wide GIS tool that could integrate recreation use data from trail counters, vehicles counts and other data sources (*Commissioner Wentworth*)

### 5. CALTRANS

- A. Presentation on draft District 9 Origin and Destination (O & D) Study by Caltrans consultant RSG
- B. District 9 State Highway Operation and Project Program (SHOPP) presentation for review and comment **p.5**
- C. Activities in Mono County and pertinent statewide information

---

## COMMISSIONERS

Jennifer Kreitz Sandy Hogan John Peters Lynda Salcido Fred Stump John Wentworth

**6. TRANSIT**

- A. Eastern Sierra Transit Authority (ESTA) monthly update (*Phil Moores*)
- B. Yosemite Area Regional Transportation System (YARTS) monthly update (*Christine Chavez*)

**7. ADMINISTRATION**

- A. Tioga Pass Opening Procedures – verbal update (*Gerry LeFrancois & Tony Dublino*) **p.15**

**8. CORRESPONDENCE**

- A. District 9 letter regarding multi-use path in Lee Vining **p.16**

**9. COMMISSIONER REPORTS**

Reports from Commissioners

**10. INFORMATIONAL**

- A. California Road Charge Demonstration Project **p.17**

**11. UPCOMING AGENDA ITEMS**

- A. Region wide GIS tools to integrate recreational use data from trail counts, vehicle counts, etc
- B. MOU update, project(s) status
- C. Election of Chair (County) and Vice Chair (Town of Mammoth Lakes)
- D. Continued Tioga Pass discussion with National Park Service

**12. ADJOURN** to January 11, 2020 meeting

**\*NOTE:** Although the LTC generally strives to follow the agenda sequence, it reserves the right to take any agenda item – other than a noticed public hearing – in any order, and at any time after its meeting starts. The Local Transportation Commission encourages public attendance and participation.

*In compliance with the Americans with Disabilities Act, anyone who needs special assistance to attend this meeting can contact the commission secretary at 760-924-1804 within 48 hours prior to the meeting in order to ensure accessibility (see 42 USCS 12132, 28CFR 35.130).*

# Mono County Local Transportation Commission

PO Box 347  
Mammoth Lakes, CA 93546  
760.924.1800 phone, 924.1801 fax  
[commdev@mono.ca.gov](mailto:commdev@mono.ca.gov)

PO Box 8  
Bridgeport, CA 93517  
760.932.5420 phone, 932.5431 fax  
[www.monocounty.ca.gov](http://www.monocounty.ca.gov)

## DRAFT MINUTES

OCTOBER 19, 2020

---

**COUNTY COMMISSIONERS:** John Peters, Fred Stump, Jennifer Kreitz

**TOWN COMMISSIONERS:** Sandy Hogan, John Wentworth, Dan Holler (as alternate for absent Lynda Salcido)

**COUNTY STAFF:** Gerry LeFrancois, Bentley Regehr, Chad Senior, Tony Dublino

**TOWN STAFF:** Haislip Hayes

**ESTA:** Phil Moores

**CALTRANS:** Dennee Alcala, Austin West, Mark Heckman

**CHP:** Chuck Mairs

**Public:** Rhonda Duggan, David Rosky

---

1. **CALL TO ORDER & PLEDGE OF ALLEGIANCE:** Vice-chair Kreitz called the meeting to order at 9:02am. Commissioner Holler led the pledge of allegiance.

2. **PUBLIC COMMENT:** No public comments.

3. **MINUTES:**

A. Approval of minutes from May 11, 2020

**Motion:** Approve amended minutes with provided corrections

*Peters/Hogan. Ayes: Hogan, Peters, Stump, Wentworth, Kreitz, Holler.*

B. Deferral of minutes from June 8, 2020.

4. **LOCAL TRANSPORTATION**

A. Review and consider the Chair's signature on a letter concerning the State's Active Transportation Plan.

- Gerry LeFrancois presented project.
- Commissioner Hogan and Vice-Chair Kreitz had minor corrections.
- Commissioner Wentworth: Share and collaborate with Region 5.
- Gerry LeFrancois will integrate requested changes into letter.

**Motion:** Approve Chair's signature on letter.

*Kreitz/Wentworth Ayes: Hogan, Peters, Stump, Wentworth, Kreitz, Holler.*

B. Discuss development of a region wide GIS tool that could integrate recreation use data from trail counters, vehicles counts and other data sources.

- Gerry LeFrancois introduced project.
- Commissioner Wentworth: Discussed pilot program for development of a GIS tool. Directed staff to work with Mono County GIS, Town of Mammoth Lakes Staff, Caltrans District 9, ESTA, and Matt Paruolo of Mammoth Lakes Recreation to create a framework.
- Gerry LeFrancois: Needs to be incorporated in Overall Work Program.

---

### COMMISSIONERS

Jennifer Kreitz   Sandy Hogan   John Peters   Lynda Salcido   Fred Stump   John Wentworth

- Commissioner Hogan and Commissioner Stump requested presentation on the project at a future meeting.
- David Rosky asked if there is a way to distinguish bicycle traffic. Commissioner Wentworth states that details for trail counters will be worked out once framework for the project is in place.
- Rhonda Duggan expressed concern for resources.
- Commissioner Hogan suggested to create framework prior to creation of a program in the Overall Work Program.

## 5. CALTRANS

- A. Activities in Mono County & pertinent statewide information
- Dennee Alcalá: Overview of current projects.
  - Mark Heckman: Update on Sustainable Communities Grant.

## 6. TRANSIT

- A. Eastern Sierra Transit Authority (ESTA) updates
- Phil Moores discussed grants, staffing, and service updates, including alterations for the upcoming winter season.

**Break: 10:24 to 10:30am**

- B. Yosemite Area Regional Transportation System (YARTS) updates
- Gerry LeFrancois passed along updates from Christine Chavez.

## 7. ADMINISTRATION

- A. Approve Resolution 20-11 adopting the Federal Transit Administration (FTA) Title VI Compliance Program.

**Motion:** Approve Resolution 20-11 adopting the Federal Transit Administration (FTA) Title VI Compliance Program, with direction to staff to make amendments as necessary to Appendix D.  
*Holler/Hogan Ayes: Hogan, Peters, Stump, Wentworth, Kreitz, Holler.*

## 8. QUARTERLY UPDATES

- A. Haislip Hayes provided updates on current projects in the Town of Mammoth Lakes and the status of Red's Meadow.
- B. Chad Senior provided an update on projects completed in Mono County during the summer and upcoming projects. Commissioner Stump requested an update on Airport Road and Long Valley Streets at a future meeting.

**9. COMMISSIONER REPORTS**

- Commissioner Holler: Operational changes for winter.
- Commissioner Peters: Highway 182 safety issues.
- Commissioner Stump: Supports speed limit reductions on Highway 182.
- Commissioner Wentworth: Updates on The Parcel, including timeline.

**10. UPCOMING AGENDA ITEMS**

- Commissioner Stump: Connection between Tioga Inn and Lee Vining.
- Commissioner Kreitz: Resolution of appreciation for Commissioner Stump, request for standing item on MOUs, YARTS ridership information.
- Commissioner Wentworth: Report on framework for GIS tool.
- Commissioner Hogan: Wildlife Crossings update, Tioga Pass opening.

**11. ADJOURN** at 11:25 am to November 9, 2020

*Prepared by Bentley Regehr, Mono County Planning Analyst*

## A RESOLUTION OF THE MONO COUNTY LOCAL TRANSPORTATION COMMISSION RECOGNIZING FRED STUMP FOR HIS SERVICE AS A COMMISSIONER

**WHEREAS** Fred Stump moved to Mono County in 1976 with his family and has lived in June Lake, Lee Vining, and Crowley Lake; and

**WHEREAS** Fred Stump was first elected to the Board of Supervisors in 2012 after a long career at California Department of Forestry and Fire Protection; and

**WHEREAS** elected Supervisor Stump has served on numerous commissions and committees over the years including Airport Land Use Commission (ALUC), Great Basin Unified Air Pollution Control District (GBUAPCD), Local Agency Formation Commission (LAFCO), Local Transportation Commission (LTC), Owens Valley Groundwater Joint Powers Authority, Tri-Valley Groundwater Management District, and many others during his eight years as a Board member; and

**WHEREAS** Commissioner Stump's eight years on the Local Transportation Commission included yearly adoption of the Overall Work Program (OWP), public input and approval of Unmet Transit Needs in the County, and the allocation of funds for transit to Eastern Sierra Transportation Authority (ESTA) governed by the Transportation Development Act (TDA); and

**WHEREAS** Commissioner Stump reviewed and prioritized local, regional, and state transportation projects every two years to implement the Regional Transportation Plan (RTP) with significant funding through the Regional Transportation Improvement Program (RTIP); and

**WHEREAS** Commissioner Stump has been very supportive of the Local Transportation Commission regional efforts to improve US 395 and State Route 14 under the Memorandum of Understanding (MOU) with Inyo County Local Transportation Commission, Kern Council of Governments, San Bernardino County Transportation Authority, and Caltrans for both area residents and the traveling public with some of these MOU projects dating back to 1998; and

**WHEREAS** Commissioner Stump has tirelessly advocated for his constituents on SR 6, SR 120, SR 168, SR 266, and US 395 such as transit service, reliable phone, internet, and cell service, and safety projects on SR 6, and reminded all of us that every corner of this great county deserves attention and resources; and

**WHEREAS** working with Commissioner Stump over the years has been a delight; and his enthusiasm, expertise, and sensibleness; his detailed approach to problem solving; his respect for staff and the public; and always being prepared by reading staff reports and materials will be greatly missed on the Local Transportation Commission.

**NOW, THEREFORE, BE IT RESOLVED** that the Mono County Local Transportation Commission expresses sincere appreciation to Commissioner Fred Stump for his eight years of service to the citizens of Mono County and best wishes on his future adventures. Approved December 14, 2020.

---

**Sandy Hogan**

**John Peters**

**Lynda Salcido**

---

**John Wentworth**

**Jennifer Kreitz**

# Mono LTC & Caltrans SHOPP PROGRAMMING COORDINATION

State Highway Operation and Project Program(SHOPP)  
Regional Outreach

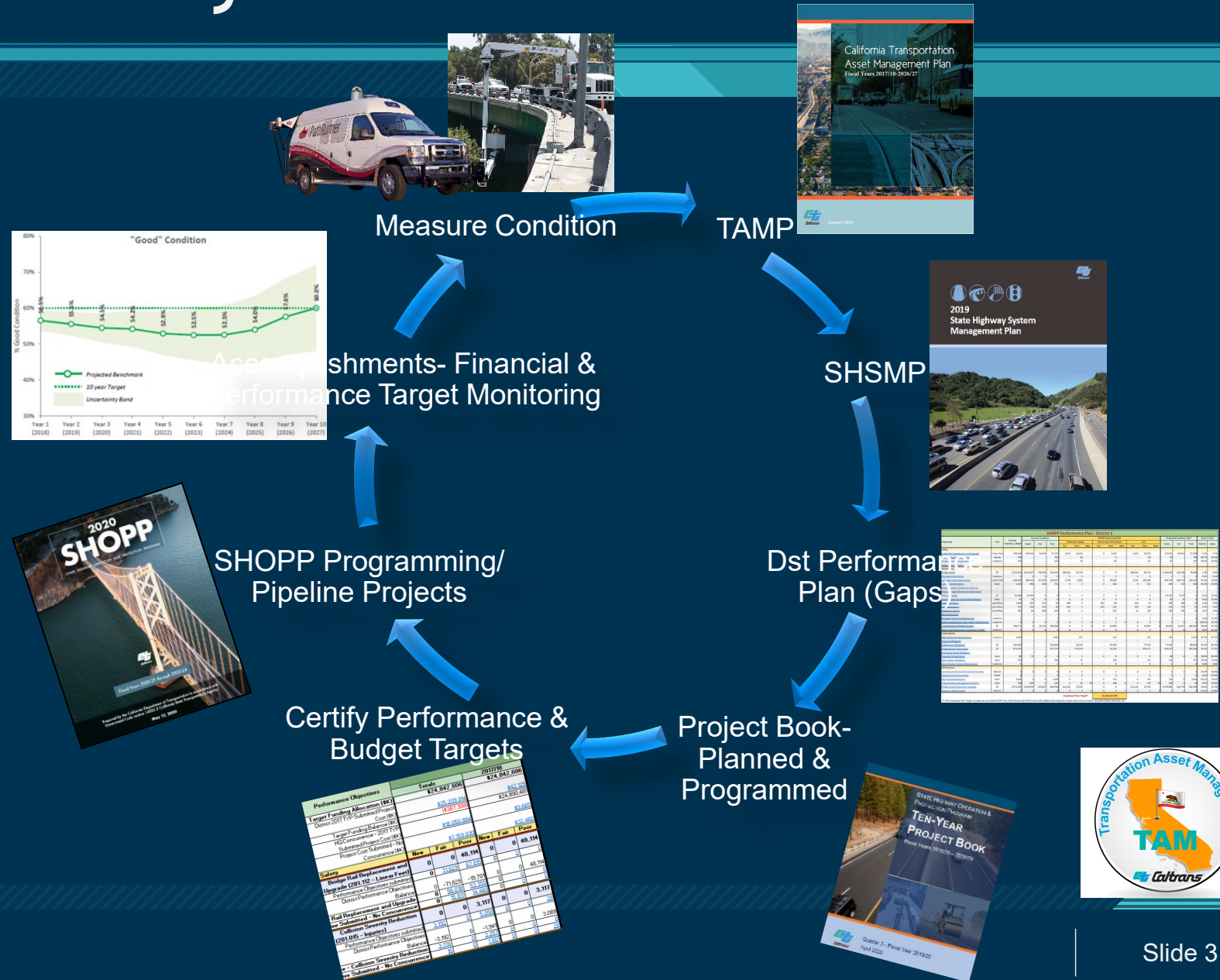
# State Highway Operation and Protection Program (SHOPP)

The SHOPP is the State Highway System's "fix-it-first" program that funds the repair and preservation, emergency repairs, safety improvements, and some highway operational improvements on the State Highway System (SHS).



# Asset Management Cycle

The TAMS vision supports existing deliverables through data integration, presentation, analysis and functionality to support the entire asset management cycle from planning, programming, project delivery to maintenance and operations.

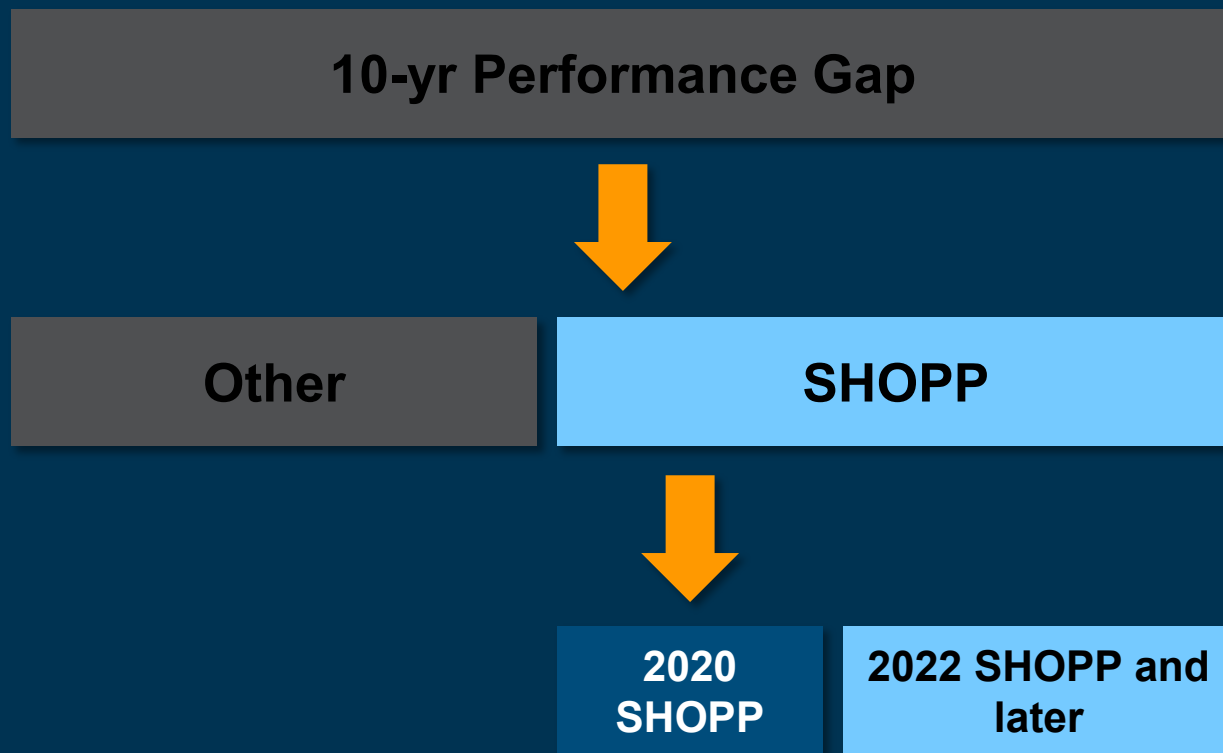


# Closing the Performance Gap

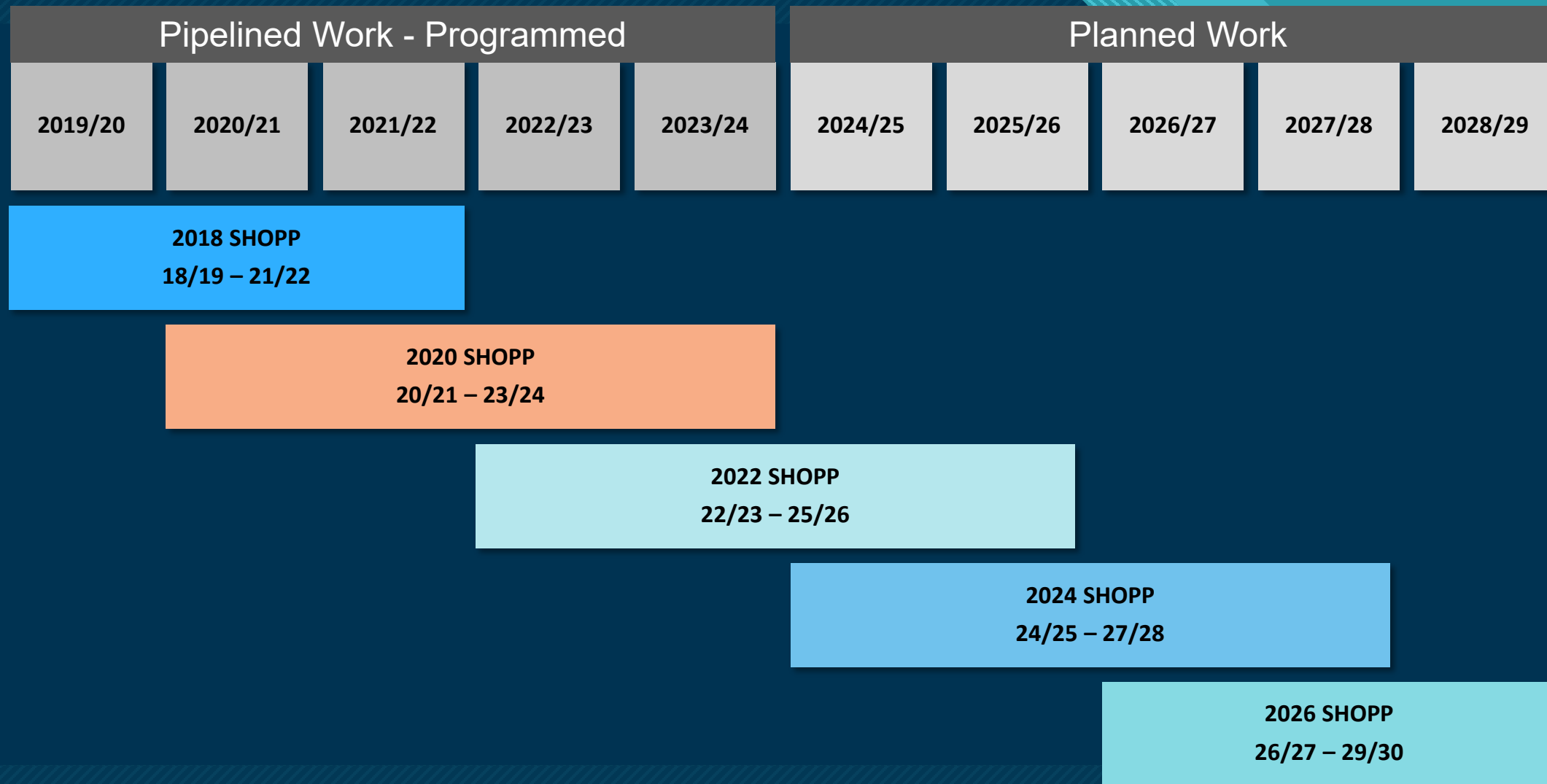
Under the performance management framework, 10-year gaps are determined for each objective, considering current and projected asset condition, targets, and pipeline work.

Performance (or condition improvements) needed to reach targets are achieved through a combination of SHOPP and non-SHOPP program work.

The 4-year portfolio of projects in the 2020 SHOPP is expected to deliver the necessary performance to achieve 10-year targets.



# 2019 SHSMP Ten Year Plan



# District 9 Performance Plan (RTL FY 2019/20 Through 2028/29)

## Allocated \$477,977,451

2019 SHSMP - District 9 Performance Plan (RTL FY 2019/20 Through 2028/29)																		
Objectives	Unit	Baseline Inventory	Baseline Performance			Maintenance Target Accomplishments (10 Years)			SHOPP Target Accomplishments (10 Years)									
			Good	Fair	Poor	Good to Good	Fair to Good	Poor to Good	Pipelined Projects (Through RTL FY 23/24)			Remaining Target Performance (RTL FY 24/25 Through 28/29)			Sum			
									Fair to Good	Poor to Good	New	Fair to Good	Poor to Good	New	Fair to Good	Poor to Good	New	
<b>Safety</b>																		
<a href="#">Bridge Rail Replacement and Upgrade</a>	Linear Feet	44,976	32,712	12,107	157	-	-	-	1,328	0	0	0	0	11	0	1,328	11	0
<a href="#">Collision Severity Reduction</a>	Fatal / Serious Injury Collisions	56	-	-	56	-	-	-	-	7	-	-	-	0	-	-	7	-
<a href="#">Roadside Safety Improvements</a>	Locations	110	-	-	110	-	-	-	-	32	-	-	-	10	-	-	42	-
<a href="#">Safety Improvements</a>	-	-	-	-	-	-	-	-	-	-	-	-	-	-	-	-	-	-
<b>Stewardship</b>																		
<a href="#">Bridge and Tunnel Health</a>	Square Feet	966,385	713,502	163,047	89,836	-	4,478	0	5,253	5,253	0	0	0	0	5,253	5,253	0	
<a href="#">Drainage Pump Plants</a>	Locations	0	0	0	0	-	-	-	0	0	0	0	0	0	0	0	0	0
<a href="#">Drainage Restoration</a>	Linear Feet	451,479	384,225	51,979	15,275	-	34,404	0	77	4,326	30	7,759	0	0	7,836	4,326	30	
<a href="#">Lighting Rehabilitation</a>	Each	441	182	83	176	-	-	-	0	42	0	0	5	0	0	47	0	
<a href="#">Major Damage (Emergency Opening)</a>	-	-	-	-	-	-	-	-	-	-	-	-	-	-	-	-	-	
<a href="#">Major Damage (Permanent Restoration)</a>	-	-	-	-	-	-	-	-	-	-	-	-	-	-	-	-	-	
<a href="#">Office Buildings</a>	Square Feet	37,545	0	10,075	27,470	-	-	-	0	0	0	0	0	0	0	0	0	
<a href="#">Overhead Sign Structures Rehabilitation</a>	Each	10	10	0	0	-	-	-	0	0	0	0	0	0	0	0	0	
<a href="#">Pavement Class I</a>	Lane Miles	1,548	1,338	206	4	676	132	0	227	5	0	187	0	0	414	5	0	
<a href="#">Pavement Class II</a>	Lane Miles	595	462	133	0	142	45	0	30	0	0	156	0	0	186	0	0	
<a href="#">Pavement Class III</a>	Lane Miles	419	264	155	0	167	238	0	32	0	0	14	0	0	46	0	0	
<a href="#">Relinquishments</a>	-	-	-	-	-	-	-	-	-	-	-	-	-	-	-	-	-	
<a href="#">Roadway Protective Betterments</a>	Locations	2	-	-	2	-	-	-	-	0	-	-	0	-	-	0	-	
<a href="#">Safety Roadside Rest Area (SRRAs) Rehabilitation</a>	Locations	3	0	3	0	-	-	-	0	0	0	0	0	0	0	0	0	
<a href="#">Transportation Related Facilities</a>	Square Feet	153,054	19,593	61,181	72,280	-	-	-	0	8,300	12,413	0	5,201	0	0	13,501	12,413	
<a href="#">Water and Wastewater Treatment at SRRAs</a>	Locations	3	0	1	2	-	-	-	0	0	0	0	1	0	0	1	0	
<b>Sustainability</b>																		
<a href="#">ADA Pedestrian Infrastructure</a>	Deficient Elements	382	-	-	382	-	-	-	-	1,260	-	-	0	-	-	1,260	-	
<a href="#">Advance Mitigation</a>	-	-	-	-	-	-	-	-	-	-	-	-	-	-	-	-	-	
<a href="#">Bridge Scour Mitigation</a>	Square Feet	4,101	-	-	4,101	-	-	-	-	0	-	-	1,624	-	-	1,624	-	
<a href="#">Bridge Seismic Restoration</a>	Square Feet	0	-	-	0	-	-	-	-	0	-	-	0	-	-	0	-	
<a href="#">Roadside Rehabilitation</a>	Acres	11	2	4	5	-	-	-	0	0	0	0	0	0	0	0	0	
<a href="#">Storm Water Mitigation</a>	Compliance Units	0	-	-	0	-	-	-	-	0	-	-	0	-	-	0	-	
<b>Performance</b>																		
<a href="#">Bridge Goods Movement Upgrades</a>	Square Feet	966,385	899,110	40,677	26,598	-	-	-	0	0	0	0	0	0	0	0	0	
<a href="#">Commercial Vehicle Enforcement Facilities</a>	Square Feet	4,350	0	4,230	120	-	-	-	0	0	0	0	120	0	0	120	0	
<a href="#">Operational Improvements</a>	DVHD	0	-	-	0	-	-	-	-	0	-	-	0	-	-	0	-	
<a href="#">Sign Panel Replacement</a>	Each	1,512	0	0	1,512	-	-	-	0	189	0	0	132	0	0	321	0	
<a href="#">Transportation Management Systems</a>	Each	129	110	0	19	-	-	-	0	59	4	0	0	0	0	59	4	
<a href="#">Weigh-in-Motion Scales</a>	Stations	2	0	2	0	-	-	-	0	0	0	0	0	0	0	0	0	
<b>SHOPP Five-Year Target Investment*</b>												<b>\$477,977,451</b>						

(\* ) The SHOPP Five-Year Target Investment includes the estimated SHOPP cost of the Remaining Performance AND additional funds for project-level cost anomalies, Complete Street elements, and other ancillary project costs.

# District 9 - Mono County Projects

- Total # of Projects:
  - 14
- Total SB1 Eligible Projects:
  - 7
- Total cost of Projects:
  - \$167.7M
- Average Cost Per Project:
  - \$12.0M
- [10 Year Project Book](#)

# Mono County Project List

Names	SHOPP ID	District	County	Route	Begin Mile	End Mile	Activity	Planning or Post planning?	Advertised Year	Project Cost (\$K)	SB-1 Priority
Mono Mitigation Bank	16729	9	Mono	395	R0.0R	R0.0R	Advance Mitigation	Post-Planning	2019/20	\$3,550	
District 9 End Treatments	17790	9	Mono	89	5.5	5.8	Safety - Collision Reduction	Post-Planning	2020/21	\$4,562	
Mono County Chain Up Area	16632	9	Mono	395	R2.2R	69.85	Roadside	Post-Planning	2020/21	\$4,925	
N Sherwin Shoulders	13540	9	Mono	395	R6.92R	9.506	Safety - Collision Reduction	Post-Planning	2020/21	\$22,451	
Conway Ranch Shoulders	16629	9	Mono	395	58.2	60.2	Safety - Collision Reduction	Post-Planning	2021/22	\$9,376	
Cemetery Pavement	19018	9	Mono	395	55.5	58.2	Pavement	Post-Planning	2022/23	\$10,195	Yes
Sonora Jct Shoulders	16630	9	Mono	395	91.6	93.7	Safety - Collision Reduction	Post-Planning	2022/23	\$20,060	
Lee Vining Pavement	18987	9	Mono	395	50.5	55.6	Mobility - ADA	Post-Planning	2023/24	\$23,635	
Rock Creek Pavement	19005	9	Mono	395	R9.8	R12.6	Pavement	Post-Planning	2023/24	\$13,543	Yes
Bridgeport Pavement	18974	9	Mono	395	76	80.6	Pavement	Post-Planning	2025/26	\$15,588	Yes
Benton Pavement	20347	9	Mono	6	R16.9	26.5	Pavement	Planning	2025/26	\$7,741	Yes
203 Pavement	20357	9	Mono	203	L0.0	R8.671	Pavement	Planning	2026/27	\$15,036	Yes
Sonora Maintenance Station	21830	9	Mono	395	93.81	93.81	Facilities	Planning	2027/28	\$5,047	
East Walker River pavement	22251	9	Mono	182	5.5	12.6	Pavement	Planning	2028/29	\$5,981	Yes
Devils Gate Pavement	21131	9	Mono	395	84.1	93.4	Pavement	Planning	2028/29	\$10,525	Yes

**Comments?  
Questions?**

**Thank You**



# Mono County Local Transportation Commission

PO Box 347  
Mammoth Lakes, CA 93546  
760-924-1800 phone, 924-1801 fax  
commdev@mono.ca.gov

PO Box 8  
Bridgeport, CA 93517  
760-932-5420 phone, 932-5431 fax  
www.monocounty.ca.gov

## LTC Staff Report

**TO:** Mono County Local Transportation Commission

**DATE:** December 14, 2020

**FROM:** Gerry Le Francois, Co-Executive Director  
Tony Dublino, Public Works Director

**SUBJECT:** Tioga Pass Opening Procedures

### RECOMMENDATION

Receive verbal update from staff and provide any desired direction

### FISCAL IMPLICATIONS

Unknown at this time

### ENVIRONMENTAL COMPLIANCE

Not applicable at this time

### RTP/RTIP CONSISTENCY

Not applicable at this time

### DISCUSSION

Tony Dublino and I met with National Park Service personnel via zoom. Staff will update the Commission on the 14<sup>th</sup>.

**DEPARTMENT OF TRANSPORTATION**

DISTRICT 9  
 500 SOUTH MAIN STREET  
 BISHOP, CA 93514  
 PHONE (760) 872-0602  
 FAX (760) 872-0605  
 TTY 711  
 www.dot.ca.gov



*Making Conservation  
 a California Way of Life.*

December 8, 2020

Lynda Salcido, Chair  
 Mono County Local Transportation Commission (LTC)  
 PO Box 347  
 Mammoth Lakes, CA 93546

**Multi-Use Path Proposal - Lee Vining to State Route 120**

Dear Ms. Salcido:

The California Department of Transportation (Caltrans) District 9 supports the Departmental Safety and Health goal – to provide a safe transportation system for all and promote health through active transportation in communities. District 9 and Mono County continually engage regarding transportation decisions via the LTC, Regional Planning Advisory Committees, the Local Development-Intergovernmental review process, grant opportunities, individual projects, and community outreach efforts.

Caltrans supports development of a multi-use path project connecting “downtown” Lee Vining with other business services and the transit stop along SR 120. We are committed to working with the County, community members, and other stakeholders toward the realization of such a project. To further this effort, we request that the LTC and Mono County conduct public outreach to gather project ideas/support; and amend the Mono County Regional Transportation Plan to document outreach results and LTC support.

Currently, District 9 has no funding for project development of a multi-use path at this location. Caltrans district staff have submitted a proposal to Caltrans headquarters for Complete Streets supplemental funds and will continue to research options for additional funding sources. Any state funds could complement local, regional, and/or private developer funding dedicated for the project. Based on available funds, the Caltrans Lee Vining Road Rehabilitation project (possible construction year 2024/2025) could include a path segment from the wall to Utility Road along US 395's west side.

We value our cooperative working relationship with Mono County regarding multi-modal facilities for the transportation system. For any questions, feel free to contact Dennee Alcala at (760) 784-4236 or [Dennee.Alcala@dot.ca.gov](mailto:Dennee.Alcala@dot.ca.gov).

Sincerely,

RYAN A. DERMODY  
 District 9 Director



# California Road Charge



Fair. Transparent. Sustainable.

Starting in January 2021, California will test how Road Charge can work with four technologies: usage-based insurance, ridesharing, electric vehicle charging stations/pay-at-the-pump systems, and autonomous vehicles. Participation in the upcoming demonstration project can help California develop a fairer, more transparent and more sustainable way to fund California's transportation network. [Learn more about each demonstration phase >>](#)

## Frequently Asked Questions About Participation

### What are you trying to learn from this demonstration project?

This demonstration is designed to evaluate how a Road Charge system could be deployed across unique technology platforms. We're working to assess how easily these systems can help report mileage driven, how data could be used to collect a road charge, and how easy they are for people to use and understand.

### What is the ideal participant profile?

All participants must be California residents age 18 or older. Beyond that, we want to make sure any Road Charge system could work for all Californians, so we want our participants to reflect the wide diversity of the state. If you participate in a phase that requires a vehicle, you must have your own vehicle, have a current valid driver's license and insurance, and be able to purchase fuel or charging sessions. You will also need to establish an account with one of our service providers, which may require having a valid credit or debit card and a smartphone with which to download the demonstration apps.

### Do I need to own or lease a car to participate?

No! If you live or work in West Sacramento - the geographic region of our Transportation Network Company (ridesharing) phase - then your participation simply requires that you sign up for the City's ridesharing program and take at least five rides over the course of the demonstration.

However, if you participate in a phase where you use your vehicle (pay-at-the-pump/electric charging station and usage-based insurance) we ask that you use the same vehicle for the duration of the demonstration, have access to your vehicle's diagnostics port, and fuel or charge your vehicle at least once per month over the course of the demonstration.

### What type of information will be collected?

It depends on the phase you sign up for. For the pay-at-the-pump/electric charging station phase, the demonstration research team will collect information on the number of miles traveled, how much fuel your vehicle consumes, and whether the vehicle is traveling inside or outside the State of California. Caltrans will not know who that vehicle belongs to or where the vehicle is specifically located at any given time. Further, all personally identifiable information used to enroll in the demonstration (name, address, phone number, email, etc.) will be removed from records and not provided to the State.

### How will the demonstration data be safeguarded?

The technology partners and platforms used for the demonstration have all undergone strict testing and security certifications, similar to those required by credit card companies and the banking industry. These standards require the strictest of security protocols and data encryption measures to protect all data being collected during the demonstration.

## Will I have the chance to try out a driverless car?

Not through this demonstration; the Automated Vehicle phase will not include any participants.

## Can I sign up for more than one demonstration phase?

To maximize the number of participants, we are restricting participation to only one phase.

## What's the time commitment for participating?

Our goal is to make your involvement in this demonstration as easy and convenient as possible. There will be a nominal time commitment to setup your account, monitor your simulated road charges, complete demonstration activities, complete participant surveys and discussions, and close out your account. We don't expect these efforts to take more than a few hours over the course of the demonstration. Also, much of the involvement in the demonstration will include things you may already be doing, such as driving, buying fuel, charging your electric vehicle, or using rideshare services.

## Will I be compensated for my time or reimbursed for my mileage?

Participants will be eligible for incentives up to \$100 for their time and participation in their selected phase. This

may include setting up your account, taking a certain number of trips, completing fuel or electric charge purchases, completing surveys, taking and uploading pictures of your odometer, and closing out your account at the end of the demonstration. Specific details on the tasks for each phase, as well as the incentive payouts for certain activities, will be provided if you're selected to participate.

## Will I actually have to pay the Road Charge fees assessed during the demonstration?

No. All road charges assessed during the demonstration are simulated; no road charge fees will be collected from participants. You will still need to pay for your regular gas purchases, electric vehicle charging sessions, and any ridesharing trips you take using the demonstration partners. Funds to help cover some of these purchases may be prepaid by the demonstration team as part of incentive payouts.

## What if I am not selected for participation in the demonstration? Will there be another opportunity?

Even if you are not selected to participate, there are still other ways to share your views about a potential Road Charge program. Visit our website [www.caroadcharge.com/engage/](http://www.caroadcharge.com/engage/) to fill out our Road Charge survey, share your comments and concerns about the program, and sign up for our quarterly newsletter to learn about future demonstration opportunities.

	PHASE 1: PATP/CP	PHASE 2: UBI	PHASE 3: TNC	PHASE 4:AV
Demonstration Length	January-June 6 months	February-June 5 months	March-June 4 months	April-June 3 months
Reporting Method	Plug-in device and mobile app	Odometer photo upload to website	Mobile app	In-vehicle technology
Reporting Frequency	Weekly	Monthly	Every Ride	No participants



## Interested in participating?

The first step is to fill out the information requested on the California Road Charge website: [www.caroadcharge.com/engage/contact-us/](http://www.caroadcharge.com/engage/contact-us/). The Project Team will select participants from the pool of interested parties towards the end of this year. If selected to participate, you'll receive information on how to enroll and get started.