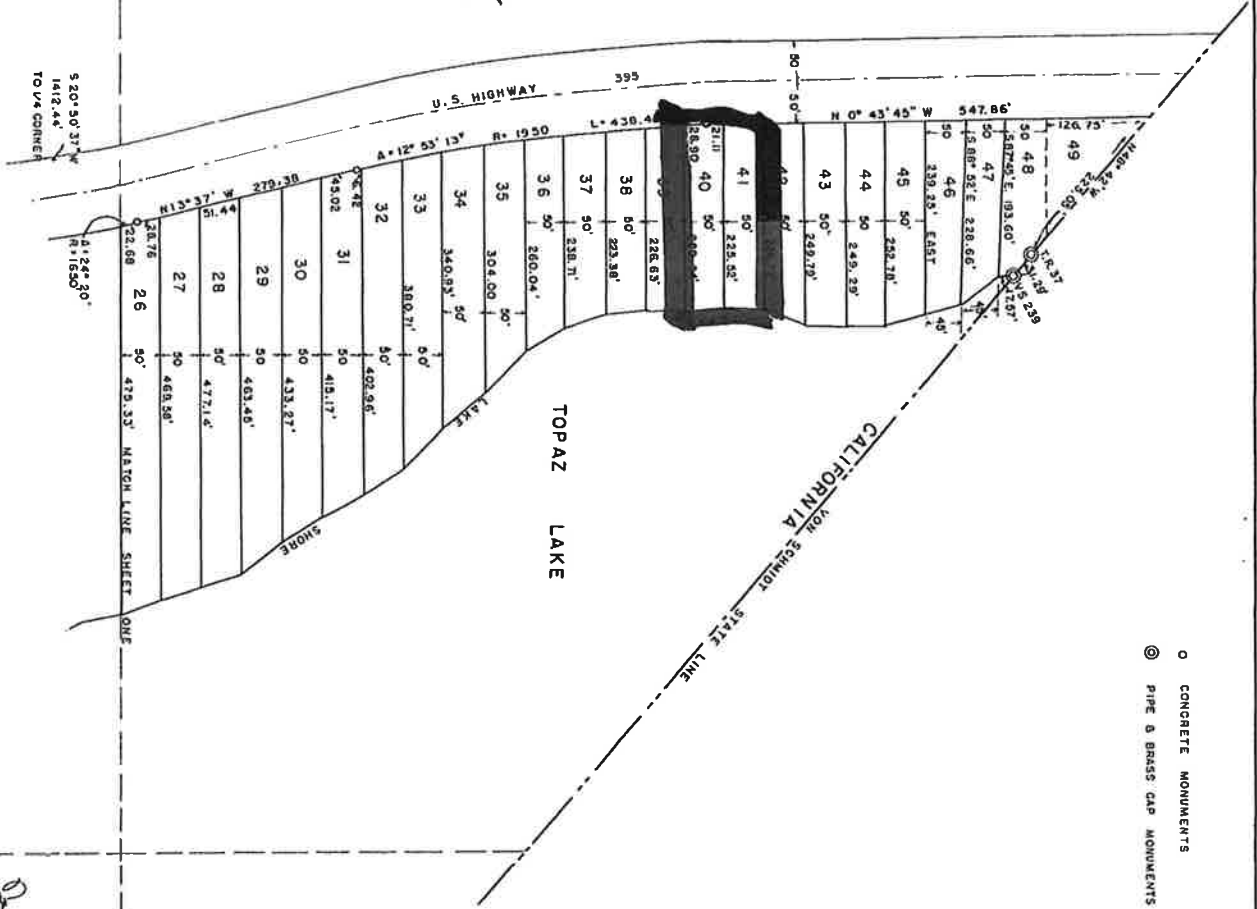




LOT 3
IN SECTION 27
T. 10 N., R. 22 E.

5 20° 50' 37" W
1412.44'
TO 1/4 CORNER



○ CONCRETE MONUMENTS
⊙ PIPE & BRASS CAP MONUMENTS

1938
JULY - 6 1938
L.R. Pilkington

SCALE - 1" = 100'
0 50 100 150 200 250 300 350 400 450 500

SHEET 2 OF 2.

PINKY'S POINT SUBDIVISION
BY L.R. PILKINGTON
IN LOT 3, & SW 1/4 SE 1/4, SECTION 27,
& NW 1/4 NE 1/4, SECTION 34, T. 10 N., R. 22 E.
MONO COUNTY, CALIFORNIA

Sheet 1, plan 48A

HWY 395

N 0° 43' 45" W

