

The property is to be used primarily for office space & as a non-commercial lab for researching techniques which will be implemented in other jurisdictions.

We will be using and storing non-controlled classes and amounts of solvents as per state regulations. There will be no more than 1 ounce of cannabis on site at any one given time.

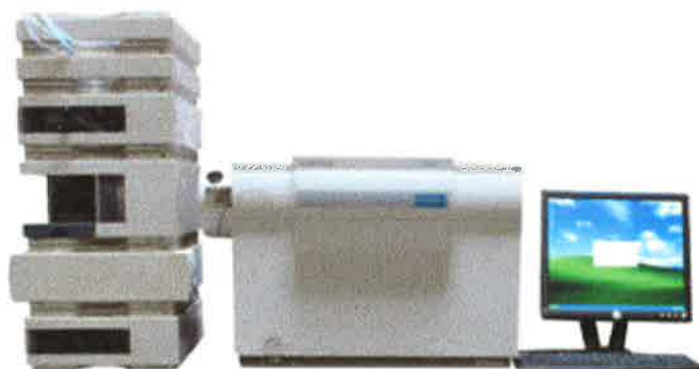
The equipment will only include HPLC, LCMS, and chromatography devices.

Note: Per State Law:

Every adult can have 28.5 grams of flower, 8 grams of concentrate. A patient can have up to 8 oz of cannabis, unless a different amount is specified by a doctor. Having under 1 ounce will cover us and we should make sure that everyone on site maintains a 420 recommendation



HPLC



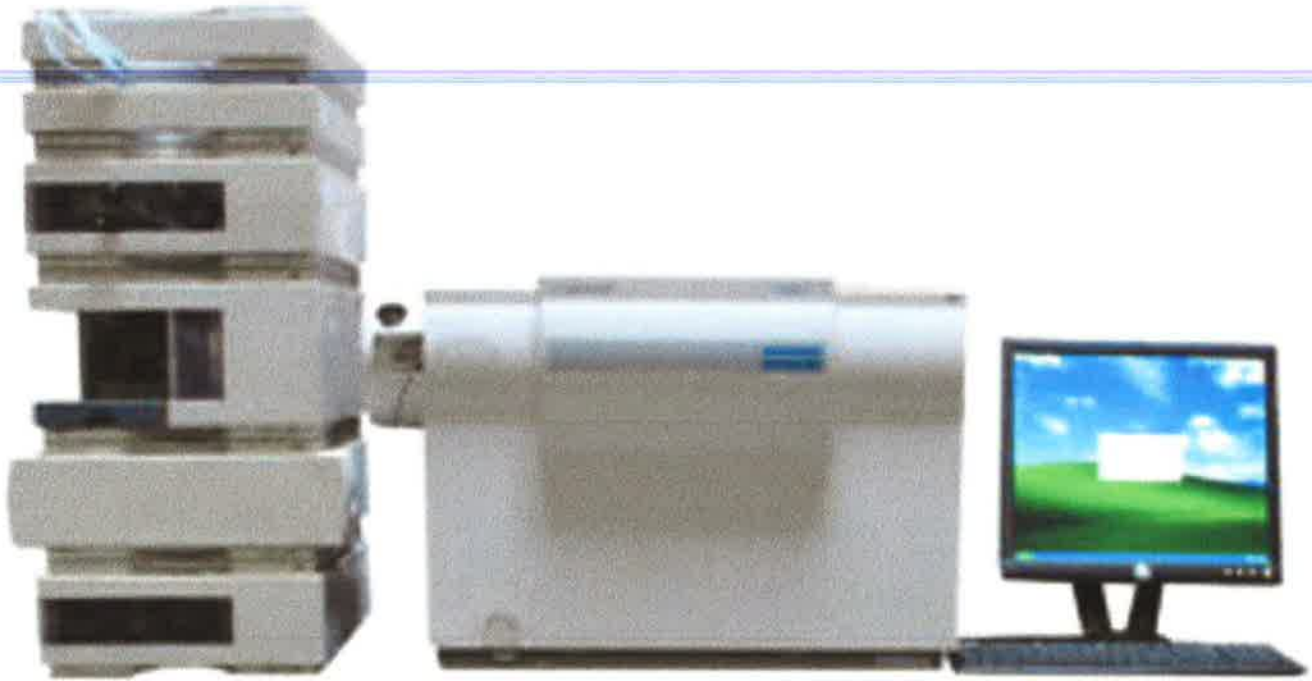
LCMS



Chromatography



HPLC



LCMS



Chromatography