

## Community Service Area 1 (CSA1) - Trails Planning effort

CSA1 is a dependent district of Mono County Government that provides enhanced service to CSA1 residents (Long Valley, McGee Creek, Crowley Lake, Aspen Springs, Toms Place/Sunny Slopes). Recreation is one of the enhanced services. The initial trail efforts will be adjacent to our communities for residents and visitors, future trails will connect our communities, and provide additional economic benefit to area businesses.

The Mono County Sustainable Outdoors and Recreation (MCSOR) program is a fundamental part of this effort. All of these concepts are on federal lands and some bisect city lands. Without the help and support of MCSOR, future approvals from city and federal land managers, this effort will not be successful.

## Goals

- 1) Support and advance new multi-use trails for all non-motorized users.
- 2) Build 50 miles of new trails within CSA 1 Boundaries.
- 3) Utilize existing public facilities (parks, campgrounds, trailheads, parking areas) as access nodes and tie trails into these facilities.

### Short Term Trails (1-2 years)

The short range goal is to legalize a couple of existing trails like 1) the trail from Tom's Place down to Lower Rock Creek Trail and 2) an existing 1.3 mile trail from the Hilton Creek Trailhead, west above the Crowley Lake BLM Campground. See maps 1 & 2. If these existing trails get approval from Inyo National Forest and Bureau of Land Management, we will plan on expanding new trails here into a stacked loop system. See map 3.

### Mid Term Trails (2-10 years)

The glacial moraines of Rock Creek, Hilton Creek, McGee Creek, and Convict Creek are great areas to build a stacked loop system close to our communities. An example would be to build 5-10 miles of new trail between the Hilton Creek Trailhead and McGee Creek (above the Crowley Lake BLM Campground). There is parking, and restrooms at the Crowley Lake Park. The Hilton Creek Trailhead is .6 miles from the park. The BLM Campground has water, and restrooms. See map 3.

### Long Term Trails (10-20 years)

A long range goal would be to link Mammoth Lakes to Toms Place with a non-motorized multi-use trail following the 7,600 foot contour linking Sherwin Creek Campground to Convict Lake, McGee Creek Campground, Hilton Creek Trailhead and eventually to Toms Place (French Camp, Holiday Campground, Tuff Campground, etc.). The Convict Lake / Tobacco Flat area could also provide a connection to Doe Ridge and the Whitmore Recreation complex.

The larger 7,600 foot trail concept is not feasible in the short-term as there are many unknown factors such as environmental, costs to build and maintain, and public support or opposition. These issues will continue to evolve, but we think it is a great regional concept. See an example on map 4 for the Convict Lake area.

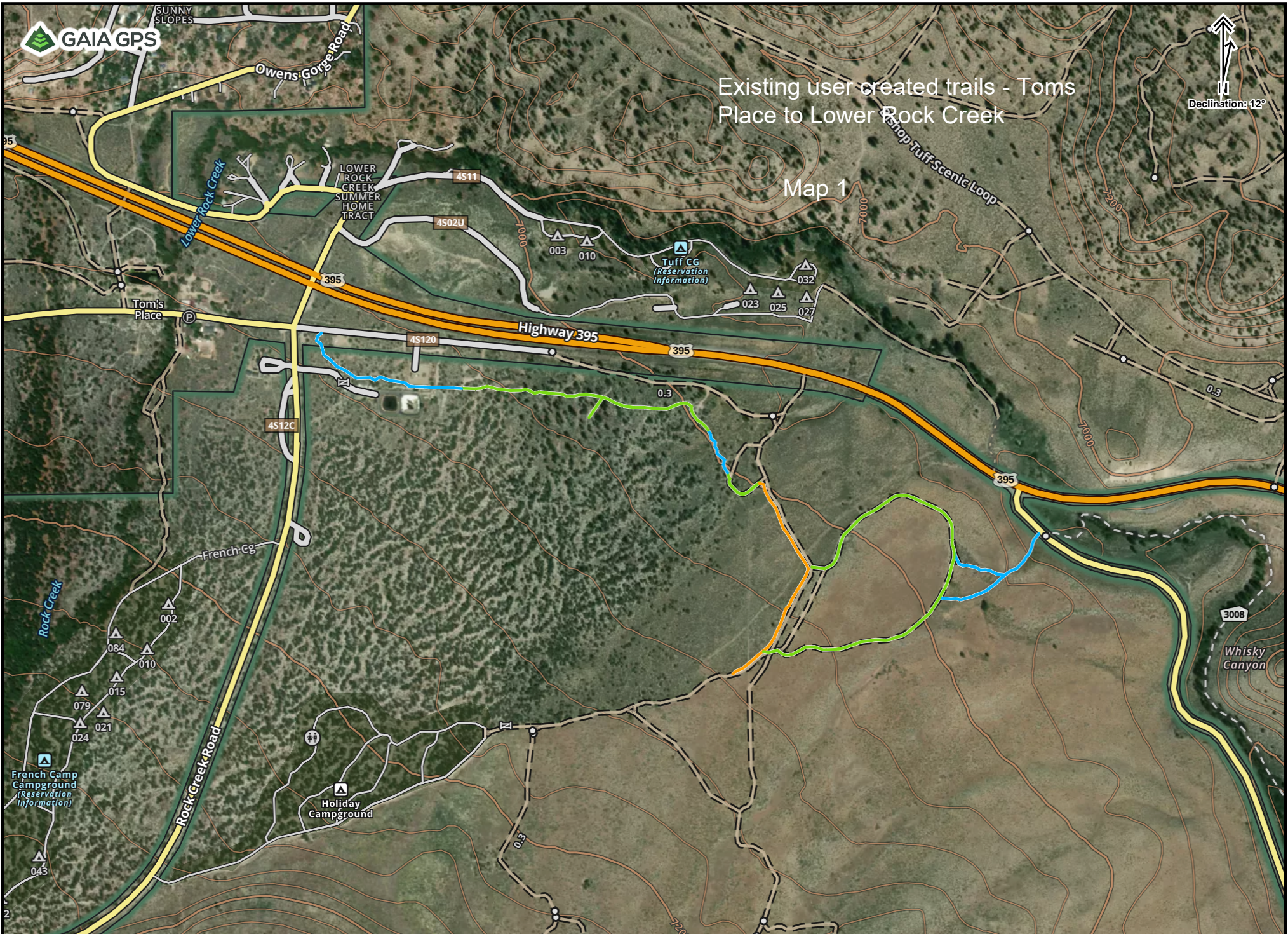
## Fiscal considerations

Trails within the CSA1 boundary will be paid for by CSA1 including permitting, building, and maintainance.

Existing user created trails - Toms Place to Lower Rock Creek



Map 1



Existing user trail Hilton / BLM

Map 2

