



Behavioral Health

Behavioral Health Hosts Feedback session on January 9th – The Mono County Behavioral Health Department is hosting a session to gather feedback from clients and the community. They are looking for YOUR ideas and EVERYONE IS INVITED! This will meet provides the staff to hear public feedback about services and presence in the community. We want to hear what you have to say!

This event is paid for by Proposition 63 funds and hosted by the staff at MC Behavioral Health.

On Thursday, January 9th, 2014 from 3:00pm to 5:00pm come meet with the staff at the 3rd Floor Sierra Center Mall (452 Old Mammoth Road, Mammoth Lakes)

CONTACT: Robin Roberts, (760) 924-1740

Clerk-Recorder's Office

On Tuesday, December 24th, a County holiday, the Recorder's Office was open for normal walk-in recording hours. Since we collect an additional \$1.00 for each document recorded, we are required pursuant to Government Code §27361.4(b) to remain open on all business days except for legal holidays—December 24th is not a designated holiday pursuant to Government Code §6700 or Section 135 of the Code of Civil Procedure. Work was steady on the 24th and we recorded an average number of documents.

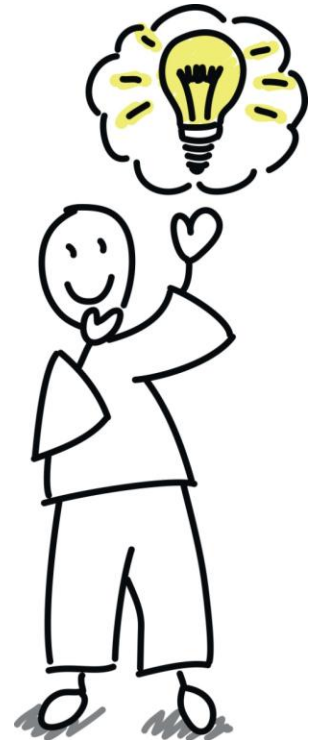
As of this writing, the office has recorded 6,745 documents, thus contributing an additional \$6,745 to County revenues. Thanks to **Sherrie Hale** and **Debra VandeBrake** for joining Lynda Roberts in keeping the office open. We will be open again on December 31st, a County holiday, from 10:30 a.m. to 3:30 p.m. for our usual number of walk-in recording hours.

CONTACT: Lynda Roberts, (760) 932-5538

Vital Records costs going up - Effective January 1, 2014, the Clerk's Office will be implementing mandated fee increases for the vital records listed below. A notice was published in the Public Notice section of both the Mammoth Times and The Sheet last week. This notice will be published again in the December 20th and December 27th issues of both papers.

The Clerk's Office has posted this notice in public places in Bridgeport and Mammoth, and has posted the information online: <http://monocounty.ca.gov/clerk>. These fee increases were mandated pursuant to Assembly Bill (AB) 1053 (Gordon, Chapter 402, Statutes of 2011) and AB 110 (Blumenfeld, Chapter 20, Statutes of 2013).

Due to the mandate, these new fees must be implemented on January 1st; however, they will be included in the revised fee schedule that is considered annually by the Board of Supervisors.



Name of Fee	Current Fee	January 1, 2014
Birth—General Public	\$20.00	\$25.00
Birth—Gov't Agency	\$14.00	\$19.00
Death—Gov't Agency/Gen Public	\$16.00	\$21.00
Fetal Death—Gov't Agency/Gen Public	\$13.00	\$18.00
Marriage—Certified Copy Gen Public	\$14.00	\$15.00
Marriage—Certified Copy Gov't Agency	\$10.00	\$11.00
Permit: Disposition of Human Remains	\$11.00	\$12.00

Clerk-Recorder-Registrar and Clerk of the Board of Supervisors - Lynda Roberts attended a New Law workshop in Sacramento the week of December 9-13. The purpose of the week-long workshop is to meet with colleagues from the other counties and review the new laws that impact the duties of the Clerk-Recorder-Registrar and Clerk of the Board of Supervisors, and discuss related issues and upcoming legislation.

In 2013, there were a total of 53 new laws passed pertaining to duties of clerks, recorders, registrars and clerks of the board. On first reading, it appears that 31 of the new laws will have minimal to no impact on the Mono County Office; however, all laws will be reviewed more thoroughly to ensure compliance as required. Outlined below is the breakdown of the new laws.

2013 Chaptered Legislation

Division	New Laws	Minimal or No Impact
Clerk	10	5
Clerk of the Board	6	5
Elections	27	12
Recorder	10	9

Elections Office - On occasion people inquire as to what the Elections Office does when there is no election. **In one word—plenty!** When not actively preparing for a specific election, we are always planning ahead for the next election cycle. Linda Romero, Assistant Clerk-Recorder-Registrar and Clerk of the Board, is the *de facto* elections manager so during the course of a year, whether we have an election or not, Linda implements the new laws, revises forms, enters new voter registration forms, attends training and conferences, updates software, conducts voter outreach, verifies petition signatures, provides election data, and maintains the voter registration database.

At the end of 2012, we had 26 new laws to review, 9 of which required significant action prior to the 2014 election cycle. Maintaining the Election Information Management System (EIMS) is also a big responsibility. In order to keep the voter records current, Linda works daily with the Secretary of State's office via CalVoter (computer system), contacts other counties as needed, documents undeliverable mail, updates addresses, enters new voter registrations, runs duplicate checks, prepares for countywide mailings to update voter address information, and checks obituaries every week so registrations of deceased voters can be cancelled. A particularly big project this year involved researching registration forms for missing unit/apartment numbers, cross checking on GPS, and then updating those records in EIMS.

The 2014 election cycle started today on December 27th when the Signature-in-lieu-of-Filing-Fee form will be available for potential candidates. The date of the primary election is June 3rd and the general

election is November 4th. It isn't too early to make sure you are registered to vote or provide corrected information to the Registrar so you are ready for Election Day.

CONTACT: Lynda Roberts, (760) 932-5538

County Administrator's Office

County Strategic Planning Process to launch in January – On December 10th, the Board approved moving forward with a needed process for our County to build the future of the County organization. Strategic Planning will ask everyone for their input as well as their visions of how we can redesign services while addressing long term and unavoidable responsibilities.

All employees along with the public and our partners will be part of the process. As the schedule is being finalized, everyone who provides the residents and visitors of Mono County services will be asked to participate. It is easy to feel the stress of the moment and challenges we face. Yet, we can do more to move forward.

Take a look at the **Board Report and Power point** which are attached to the email with Board Update and the future of Mono and how we will build that organization. Change occurs whether we participate or not. The best change occurs when we all participate.

As we begin hosting meeting through the organization as well as employee wide we will also have other means for people to send ideas in. A Mono County Strategic Planning webpage will be launched soon which will also be providing ongoing ways for people to send in their ideas.

CONTACT: Jim Leddy, (707) 529-4510

Community Development

Service Announces Public Meetings for Sierra Amphibian Proposals - The U.S. Fish and Wildlife Service (Service) will hold **two public meetings in January 2014** on the proposals to list and designate critical habitat for the Sierra Nevada yellow-legged frog, the northern distinct population segment of the mountain yellow-legged frog, and the Yosemite toad.

The first public meeting is planned to be held in Mono County on **Wednesday, January 8, 2014** from 1:00 p.m. to 3:00 p.m. at the Mono County Board of Supervisors Chambers at the Mono County Courthouse (upstairs); State Highway 395 North; Bridgeport, CA 93517. This meeting is planned to be broadcasted to the Mono County Board of Supervisors Meeting Room on the 3rd Floor of the Sierra Center Mall; 452 Old Mammoth Road; Mammoth Lakes, CA 93546. After the meeting, there will be informal breakout sessions held in Bridgeport.

The second public meeting is planned to be held in Fresno County on **Monday, January 13, 2014 from 1:00 p.m. to 3:00 p.m.** at the Fresno County Board of Supervisors Chambers; Hall of Records, Room 301; 2281 Tulare Street; Fresno, CA 93721. Service personnel will be available after the meeting for further discussion.

The Service will present information and address questions and concerns at the public meetings about the proposals as well as a draft economic analysis on the proposed critical habitat rule. The draft economic analysis is expected to be available to the public later this month. Written public comments about the proposed rules and the draft economic analysis can be collected at these public meetings for the record.

On April 25, 2014, the Service proposed to list the two frogs as Endangered Species and the toad as a Threatened Species. At the same time, the Service proposed to designate 1,831,820 acres critical habitat for the three amphibians in California; 97% of the proposed designation is located on federal lands. All three amphibian species are threatened by habitat degradation, predation, climate change, and inadequate regulatory protection.

The mission of the U.S. Fish and Wildlife Service is working with others to conserve, protect, and enhance fish, wildlife, plants, and their habitats for the continuing benefit of the American people. We are both a leader and trusted partner in fish and wildlife conservation, known for our scientific excellence, stewardship of lands and natural resources, dedicated professionals, and commitment to public service.

For more information on our work and the people who make it happen, visit www.fws.gov/cno. Connect with our Facebook page at <http://www.facebook.com/usfwspacificsouthwest>, follow our tweets at <http://twitter.com/USFWSPacSWest>, watch our YouTube Channel at <http://www.youtube.com/usfws> and download photos from our Flickr page at http://www.flickr.com/photos/usfws_pacificsw/.

CONTACT: Scott Burns, (760) 932-5423

Economic Development

The Eastern Sierra Fishing Coalition Boat Raffle raised \$7000 for fish stocking in Mono County - Raffle tickets were sold during fishing season at marinas and businesses throughout the county – the vendors each choose the body of water to be stocked, based on the total dollar value of tickets they sold. The draw took place on December 16th, live on KMMT, and the winner of the Grand Prize, a 14' Klamath Deluxe S Boat, with 8hp Honda Marine Outboard Motor and EZ loader trailer is Bob Davies from Bakersfield California; Second Prize, a Honda Marine Outboard Motor donated by Conway Ranch, goes to Vincent Martinez from San Pedro California. Great job to Jeff Simpson for coordinating this huge project and big thanks to the ESFC, Conway Ranch and all the businesses who sold tickets.

Economic Development Staff pursuing a Recreational Trails Program (RTP) grant to reprint Mono County's popular "Motor Touring in the Eastern Sierra" guide book - The Recreational Trails Program provides funds for recreational trails and trails-related projects. The grant is administered at the federal level by the Federal Highway Administration (FHWA) and at the state level by the California Department of Parks and Recreation (DPR). Motorized projects are administered by the Department's Off-Highway Motor Vehicle Recreation Division and non-motorized projects are administered by the Department's Office of Grants and Local Services. Deadline is January 6th.

The 2014 Mono County scenic/events calendar has arrived - Staff who would like a copy for their offices, please contact Jeff Simpson at jsimpson@mono.ca.gov.

During last Thursday's beautiful snow storm, Alicia Vennos toured an editor/writer with Fodor's, one of the world's top travel guide publishers, to Mono Lake, Lee Vining, June Lake, and Convict Lake to assist her in updating the publication's Eastern Sierra content.

The cattle drive tradition at Hunewill Guest Ranch in Bridgeport was recently featured on "Perspectives" on KQED, an NPR-affiliated radio station. Take a look: <http://www.kqed.org/a/perspectives/R201312160735>.

US Frontline, is a prominent Japanese-language newspaper with distribution of over 18,000 in SoCal, San Diego and San Francisco and Mono County received world class coverage. On page 3, Mono County received coverage based on our cross country skiing press release, issued in early December, and picked up by Japanese travel writer/editor, Merei Sato. You may browse the entire publication online here:

<http://www.usfl.com/ee/data/2013/1220/index.html>.

CONTACT: Alicia Vennos, (760) 924-1743

Information Technology

Digital 395 Update - Digital 395 is now active and being utilized for Internet in Mono County offices in both Mammoth and Bridgeport (Mammoth was setup on 12/26). The next step is to work on the point-to-point connection between the two locations, which we anticipate being ready in the ten days or so.

IT staff is working with the Digital 395 network engineers to resolve some network routing issues which are causing problems for County employees who are trying to access their email remotely from Schat.net connections. IT has worked around the issue, but they are still working on a more appropriate long-term solution. Network hardware has been purchased for all of our remote sites, and basic configuration work has been started for this equipment in anticipation of circuits being put online for those sites.

CONTACT: Nate Greenberg, (760) 932-5503

Town of Mammoth Lakes IT Services - IT upgrades continue at the Town, with good progress made throughout the organization. All of the Town's servers have been replaced, with the email server coming online last week. All PCs at the main offices have been replaced, along with the high priority machines at the remote locations (Police Department, Airport, Road Shop, and Transit Yard). A point-to-point wireless network was built between the Town Offices and the Ice Rink in order to support a Point of Sale system installed at that location, and work is being done in anticipation of Digital 395 arrival.

CONTACT: Nate Greenberg, (760) 932-5503

Information Technology Department Strategic Planning - Over the past six weeks, IT staff has been interviewing Department Heads throughout the County using a basic Needs Assessment template. The effort has allowed us to collect valuable information about strengths & weaknesses, as well as necessary

NEWS

クロスカントリーのメッカ イースタン・シエラへ

景色を楽しみながらスタミナをつけて健康増進。開放感あふれる雪の大地を、時に談笑しながら、時に孤独に…。そんな魅力でいっぱいのカロスカントリー・スキー。年々人気が高まっている。カリフォルニアではモノ郡を中心とするイースタン・シエラがメッカだ。ロサンゼルスから北315マイル、サンフランシスコから東280マイルで、ヨセミテ国立公園への入り口にあたる。特にマンモスとジューンの2つの湖に挟まれたBald MountainとObsidian Dome (写真)は、アメリカ森林局によって美しくグルームされたトレイルだ。フロアの滑りを見たいなら、ジューン湖で1月24~25日、ノルディックの競技会「Winter Festival and Triple Threat」が開かれる。



Photo credit: MonoCounty.org

■モノ郡の情報：800-845-7922 www.MonoCounty.org

and desired projects coming up in departments in the next several years. The results of this outreach will drive a SWOT process within IT, which during which we will look at collective IT needs of the County and Town and help inform decision making and budgeting in the coming years. More information will be provided as it is developed, and as part of the County's overall strategic planning process.

CONTACT: Nate Greenberg, (760) 932-5503

Public Health

Influenza Health Alert - In the last week, we have seen a definite increase in the presence of influenza in our community. A number of rapid influenza lab tests have been positive, and several visitors have been seen in the clinics, bringing with them a history of laboratory confirmed influenza, and now with spread of clinically compatible illness to family members, effectively exposing all of us. In California, influenza is also on the rise, with levels above baseline, and expected for this time of year. Remember, the peak is classically in mid-February, so this is just beginning. We have no idea at this point how severe the flu season will be.

However, an interesting pattern is beginning to develop, as illustrated in the following report from the Texas Department of Public Health. It is expected that this will be replicated around the country. Texas is one of 4

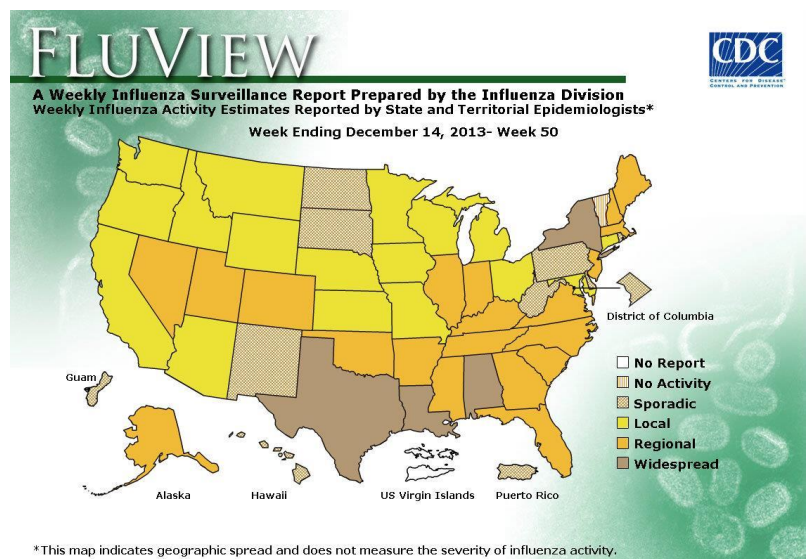
states with widespread disease. As expected, 90% of the disease is Type A. What was not expected is that 90% of the Type A cases are of the 2009 H1N1 strain, which is in the current vaccine. A hospital in the Houston area had 8 admissions, and 4 died. None were elderly. You may recall that the 2009 H1N1 strain is particularly significant in attacking a younger population, particularly age 25-65. In 2009, the death rate among children tripled!

From Texas:

Statewide influenza-like illness (ILI) activity continues to increase and is above baseline levels. ILI intensity is high in Texas, and influenza is now widespread. All Texas regions have reported laboratory confirmed influenza. Over 90 per cent of positive influenza tests reported from Texas laboratories have been typed as influenza A. Of those influenza A viruses that have been subtyped, 90 per cent have been the 2009 pandemic H1N1 subtype. This subtype of influenza is included in this season's [2013-14] influenza vaccine. No novel influenza cases have been reported in Texas. No antiviral resistant influenza strains have been reported in Texas.

Background

Influenza viruses can be spread by large respiratory droplets generated when an infected person coughs



or sneezes in close proximity to an uninfected person. Symptoms can include fever, dry cough, sore throat, headache, body aches, fatigue, and nasal congestion. Among children, otitis media, nausea, vomiting, and diarrhea are common.

Most people generally recover from illness in 1-2 weeks, but some people develop complications and may die from influenza. The highest rates of influenza infection occur among children; however, the risks for serious health problems, hospitalizations, and deaths from influenza are higher among people 65 years of age or older, very young children, and people of any age who have medical conditions that place them at increased risk for complications from influenza.

Vaccination

Everyone who is at least 6 months of age should get a flu vaccine this season [2013-14]. It is not too late for vaccination. There are several flu vaccine options available for the 2013-2014 flu season. All these vaccines contain the currently circulating H1N1 strain. We do not recommend one flu vaccine over another.

Rapid Lab Test

Rapid influenza diagnostic tests (RIDTs) can be useful to identify influenza virus infection, but false negative test results are common during influenza season. Clinicians should be aware that a negative RIDT result does NOT exclude a diagnosis of influenza in a patient with suspected influenza. When there is clinical suspicion of influenza and antiviral treatment is indicated, antiviral treatment should be started as soon as possible, even if the result of the RIDT is negative, without waiting for results of additional influenza testing.

Treatment: Oseltamivir and zanamivir are chemically related antiviral medications known as neuraminidase inhibitors that have activity against both influenza A and B viruses. Early antiviral treatment can shorten the duration of fever and illness symptoms, may reduce the risk of complications and death, and may shorten the duration of hospitalization. Clinical benefit is greatest when antiviral treatment is administered early, especially within 48 hours of influenza illness onset. Decisions about starting antiviral treatment should not wait for laboratory confirmation of influenza.

Antiviral treatment is recommended as early as possible for any patient with confirmed or suspected influenza who:

- is hospitalized,
- has severe, complicated, or progressive illness,
- is at higher risk for influenza complications.

Persons at higher risk for influenza complications recommended for antiviral treatment include:

- children aged younger than 2 years,
- adults aged 65 years and older,
- persons with chronic pulmonary (including asthma), cardiovascular (except hypertension alone), renal, hepatic, or hematological disease (including sickle cell disease); metabolic disorders (including diabetes mellitus); or neurologic and neurodevelopment conditions (including disorders of the brain, spinal cord, peripheral nerve, and muscle such as cerebral palsy, epilepsy [seizure disorders], stroke, intellectual

disability [mental retardation], moderate to severe developmental delay, muscular dystrophy, or spinal cord injury),

- persons with immunosuppression, including that caused by medications or by HIV infection,
- women who are pregnant or postpartum (within 2 weeks after delivery),
- persons aged younger than 19 years who are receiving long-term aspirin therapy.
- American Indians/Alaska Natives.
- persons who are morbidly obese (that is, body-mass index is equal to or greater than 40).
- residents of nursing homes and other chronic-care facilities.

Clinical judgment, on the basis of the patient's disease severity and progression, age, underlying medical conditions, likelihood of influenza, and time since onset of symptoms, is important when making antiviral treatment decisions for high-risk outpatients.

Additional details regarding antiviral treatment can be found at <http://www.cdc.gov/flu/professionals/antivirals/summary-clinicians.htm>.

There is speculation that the H1N1 virus circulating in Texas may be a new [more virulent?] drifted or reassorted strain. It seems likely that the fatalities observed in Texas are due to a possibly more virulent strain of the seasonal H1N1 influenza virus, rather than a novel pathogenic agent. Further information is awaited to substantiate this conclusion.

In the meantime:

-
- We encourage everyone who is not vaccinated to get their annual flu vaccine. There is plenty of vaccine, available at healthcare providers, pharmacies, and the health department.
 - Stay home when sick
 - If you are well and healthy, don't assume that flu is a mild illness. It can kill you!
 - Cover your cough, wash your hands – you know the drill!

CONTACT: Richard O. Johnson, M.D., MPH, (760) 914-0496