



Mono County

2021 State and Federal Legislative Platform

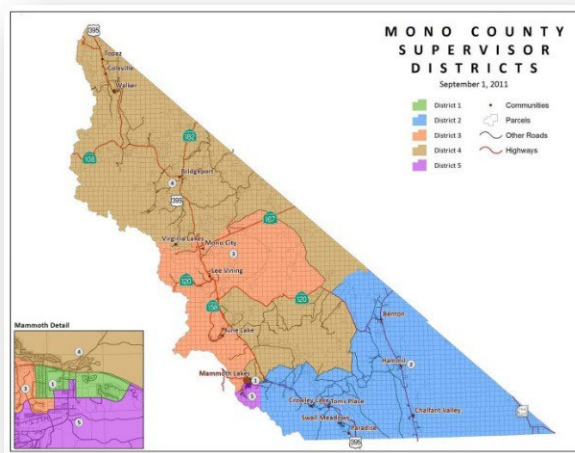
MONO
C O U N T Y

Reviewed and adopted by the Mono County Board of Supervisors
March 2, 2021

Mono County Board of Supervisors



- Jennifer Kreitz..... District 1
- Rhonda Duggan..... District 2
- Bob Gardner District 3
- John Peters District 4
- Stacy Corless..... District 5



Robert C. Lawton
 County Administrative Officer
 PO Box 696
 Bridgeport, CA 93517
 Tel: (760) 932-5415
 Email: rlawton@mono.ca.gov

Table of Contents

Introduction	4
State and Federal General Principles.....	7
State Priorities.....	9
1) Protect County revenue sources.....	9
2) Encourage regulation relief/reform.....	9
3) Natural Resources, Public Lands and Agriculture	11
4) Public Safety and Criminal Justice.....	13
5) Transportation and Infrastructure	14
6) Administrative and Fiscal Services	15
7) Health and Human Services	16
8) Economic Development	23
Federal Priorities	24
1) Support Funding/Program Preservation.....	24
2) Natural Resources, Public Lands, and Agriculture	26
3) Public Safety and Criminal Justice.....	28
4) Transportation and Infrastructure	29
5) Health and Human Services	30
County Attractions	35
Elected State Representatives:	37
Elected Federal Representatives:	37

Introduction

Mono County, California, is a rural county situated between the crest of the Sierra Nevada and the California/Nevada border. Accessed by US Highway 395 which weaves its way north-south and is a state-designated Scenic Byway from its southern boundary all the way to Topaz Lake in the north, Mono County is 108 miles in length, and has an average width of only 38 miles. With dramatic mountain boundaries that rise in elevation to over 13,000 feet, the county's diverse landscape includes forests of Jeffrey and Lodgepole pine, juniper and aspen groves, hundreds of lakes, alpine meadows, streams and rivers, and sage-covered high desert. The county has a land area of 3,030 square miles, or just over 2 million acres, 94% of which is publicly owned. Much of the land is contained in the Inyo and Humboldt-Toiyabe National Forests, as well as the John Muir and Ansel Adams Wilderness areas. As a result, Mono County offers vast scenic and recreational resources, and has unsurpassed access to wilderness and outdoor recreation and adventure.

Tourism and recreation are the County's primary economic drivers, with Tourism generating more than \$670 million in direct visitor spending during 2019 and providing employment for over half its residents. Agriculture is the County's second most significant industry.



Mono County Tourism / Mono Lake Tufas

The county is home to, and named after, Mono Lake, which is a vast high-desert saline lake with intriguing limestone tufa formations and is a vital habitat for millions of migratory and nesting birds. Mono Lake is just one of many reasons that Mono County draws landscape photographers year-round.

Another highlight is the historic gold rush town of Bodie, which during its heyday in the late 1800s, was home to as many as 10,000 people, and is now maintained as a State Historic Park with about 200 buildings still standing as they were left, preserved in a state of “arrested decay” for visitors to enjoy. Other natural wonders that attract people to Mono County include Devils Postpile National Monument, one of the world’s finest examples of columnar basalt and the headwaters of the Owens and Middle Fork San Joaquin Rivers; two of the state’s most important watersheds. Yosemite National Park’s eastern entrance at Tioga Pass is only 12 miles from Lee Vining and Mono Lake.



Mono County Tourism / Bodie State Historic Park

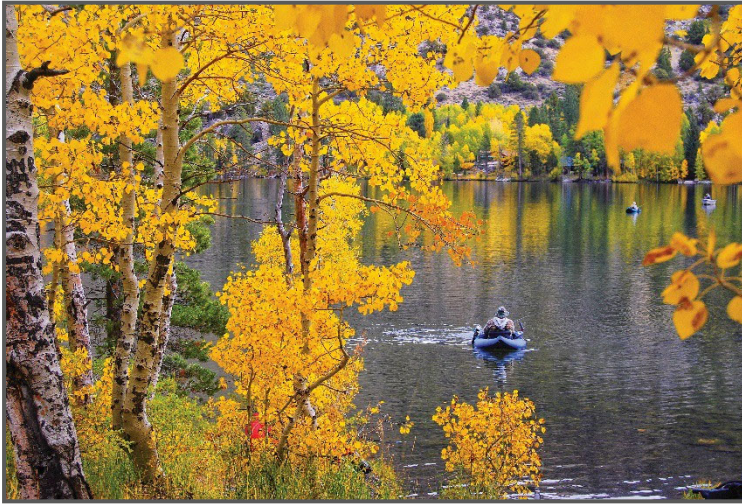


Mono County Tourism / Bridgeport Courthouse

Mono County has several small towns and charming villages, each with their own distinct scenic beauty, year-round recreational opportunities, natural and historical attractions, and unique characteristics. The County seat is proudly located in Bridgeport, where the original 1881 courthouse is the second oldest in the state to be in continuous use. The only incorporated town in the county is Mammoth Lakes, which is located at the base of world-renowned Mammoth Mountain Ski Area, with a summit of 11,053 feet, over 3500 skiable acres, 28 lifts, and an average of 400 inches of snowfall annually.

Approximately 8,100 people reside in the Mammoth Lakes area year-round, and during the peak winter season, the population swells to over 35,000 when visitors from around the state, country, and world come to ski, snowboard, and take part in many other winter activities. Sister resort, June Mountain, just 20 miles north of Mammoth Lakes, offers uncrowded, wide-open slopes and a more peaceful, family-friendly alternative to busier ski areas.

Summer, however, is when Mono County really shines. The region offers countless miles of alpine hiking, superb trout fishing at dozens of well-stocked lakes, streams and rivers, kayaking,



cycling, horseback riding, golfing, and endless warm-weather adventures. Photographers flock to the county in September and October when it is almost impossible to take a bad photo of the fall color that lights up the Eastern Sierra landscape. *Sunset Magazine* named Mono County one of the “Top 5 places to Hike” in autumn and *TravelAndLeisure.com* listed Mono County as one of “America’s Best Fall Color Drives.

Mono County Tourism / Silver Lake

A wide variety of lodging, restaurants, and shops are available throughout the county and although commercial air service to Mammoth Yosemite Airport will not be available in Summer/Fall 2021, regularly scheduled commercial flights to Bishop Airport from major west coast cities are projected to begin in December 2021. Chartered airlines and private aircraft will continue utilizing Mammoth Yosemite Airport, just a 10-minute drive from the Town of Mammoth Lakes.

State and Federal General Principles

The Mono County Board of Supervisors supports the general principles set forth below. County staff will apply these guidelines in evaluating State and Federal legislation, as well as executive and regulatory actions. It is the Board's objective to implement these guidelines.

Following preparation of the 2020 Legislative Platform, the COVID-19 Pandemic swept across the United States, taking 500,000 lives to date, and leaving no region unaffected. As a direct service provider, Mono County is responsible for mitigating and responding to COVID's effects on our residents, visitors and infrastructure.

This document includes expressions of policy support for specific COVID-19 relief measures already proposed or under consideration. The listing of these items should not be regarded as limiting the County's general support for other COVID-19 relief measures supporting individuals and service agencies which may be proposed subsequent to approval of this Platform.

Beyond inspiring policies directly related to COVID-19 response, the pandemic has illuminated the need for resilience-focused state and local disaster prevention, response and recovery planning strategies. Mono County supports state and federal initiatives to assist individuals and localities in developing greater resilience capacity.

To support the County's service to the community, the County should:

- Support legislative, regulatory or other policy efforts that protect and/or enhance local government revenues, maximize the County's access to state and federal funding sources, including pandemic support and relief programs, and/or increase local funding flexibility;
- Oppose any effort to balance the State budget through the taking of local government resources;
- Support legislation that protects the County's quality of life and diverse natural resources, while preserving the essence and historic values of the County;
- Support legislation that provides tax and funding formulas for the equitable distribution of state and federal monies while opposing attempts to decrease, restrict, or eliminate County revenue sources;
- Support legislation and budget action which provides additional and continued funding for local road infrastructure, including complete street features;
- Oppose legislative and administrative actions which would create unfunded mandates and/or preempt local decision-making authority;

- Support legislation that realigns governmental services in such a manner as to improve the delivery of services and make government more accountable to the people;
- Support the promotion of tourism, recreation, sustainable fisheries, filming, and a diversified local economy in the Eastern Sierra to achieve strong economic growth and prosperity;
- Continue to support legislation that honors our veterans for their service to our country;
- Support efforts that further the strategic directions outlined in the County's Strategic Plan;
- Engage on any proposals to repeal or additionally alter the Affordable Care Act (ACA), which provides Mono County citizens the ability to obtain affordable health care;
- Support efforts to combat climate change;
- Support legislation that seeks to address the insufficient quantity and quality of homes affordable to our residents; and
- Support legislation that addresses the burgeoning substance use disorder crisis and increases access to Medication Assisted Treatment.
- Support measures that increase resources for disaster response initiatives requiring county involvement.
- Support legislation that waives the local share of cost of all emergency response and disaster recovery activities.
- Support funding for counties to provide for higher demands on critical recovery services.
- Support local, regional, state, and federal initiatives and legislation that advance efforts to dismantle systemic racism and reduce inequity.

State Priorities

1) Protect County revenue sources

Many County programs are at risk due to the instability of State funding. The Board of Supervisors supports efforts to sustain funding, enabling the continuation of critical programs for Mono County's constituents.

2) Encourage regulation relief/reform

Mono County applauds California's efforts to protect the environment. The Board supports efforts to achieve responsible regulation relief in the following areas:

a) **Provide regulatory relief for solid waste operations**

- i) Continue to provide regulatory relief to rural jurisdictions from statewide solid waste and recycling mandates when recycling infrastructure does not yet exist and causes significant transportation costs and emissions.
- ii) Provide funding for the siting and development of recycling infrastructure, and/or develop policies within state agencies and businesses such as Caltrans, Los Angeles Department of Water and Power and Southern California Edison for the local re-use of materials (glass cullet, wood chips) when generated in rural areas.
- iii) Support development of domestic recycling markets and streamline process for recycling infrastructure development.

Domestic recycling markets are needed to address the changes in international trade policies which have disrupted California's solid waste and recycling industry by restricting foreign imports of recyclable materials and requiring reduced contamination levels in recycling streams. In order to meet California's ambitious recycling mandates, investment in and development of domestic markets has become necessary.

- iv) Support legislation that allows for alternative organic programs for rural areas and exempts them from the SB 1383 requirements until such time that an economically feasible infrastructure is in place

Rural jurisdictions are disproportionately burdened under mandates of SB 1383/Short Lived Climate Pollutants. With no developed infrastructure, no economy of scale and great hauling distances to existing infrastructure, this remains a major challenge for rural areas.

b) **Support CARB compliance legislation**

Support legislation regarding California Air Resources Board (CARB) compliance to assist rural counties with the costs associated with State mandated compliance.

c) Support environmental processing legislation

Support legislation that streamlines environmental processing, including the application of certain urban exemptions under the California Environmental Quality Act (CEQA) to rural communities.

d) Support regulation of short-term rental online platforms

Online short-term rental platforms are unregulated, leaving accountability and compliance issues to local jurisdictions. Mono County urges the legislature to support regulation of short-term rentals to ensure an even playing field with traditional commercial lodging, require accountability, provide for tax collection, and support compliance at the state and local levels.

e) Ensure adequate oversight of state requirements for commercial cannabis activities, respect local CEQA processes for cannabis permits and encourage development of hemp regulations

Mono County is concerned about the state's allocation of resources for monitoring and inspection of commercial cannabis permits to ensure compliance with state requirements, particularly in rural areas like Mono County. Where oversight is delegated to local agencies, such as the Agricultural Commissioner, adequate funding should also be provided. Where oversight is retained by the state, state agency staff should have adequate on-the-ground presence to ensure accountability and compliance without increasing the burden on local jurisdiction staff. Further, the state should respect the CEQA process conducted by local jurisdictions serving as lead agencies, even if the state's responsible agency role is not triggered, or assume lead agency status and conduct separate CEQA evaluations for the approval of state licenses. As with cannabis, state industrial hemp regulations are critical for local governments to craft local regulations that create a comprehensive set of rules to protect public health and safety while providing for the industry. Without state regulations, local jurisdictions are acting in a vacuum that may increase challenges due to uncoordinated or inconsistent requirements and approval processes. The state should continue working toward federally approved industrial hemp regulations.

f) Continue to provide and increase funding for local jurisdictions to meet affordable housing goals

In an effort to address affordable housing needs throughout the state, new housing laws are passed every year. Some carry new mandates that place a regulatory burden on local jurisdictions, and some simply require funding to implement. We encourage the State to continue providing new funding streams, such as SB 2 and the Regional Early Action Planning (REAP) grants program, as well as technical assistance programs, to assist local jurisdictions with meeting new mandates and working toward statewide and local housing goals.

3) **Natural Resources, Public Lands and Agriculture**

a) **Support sustainable funding for State parks**

Continue to support measures to sustain our State parks, roads that access these parks, and recreation programs for the continued enjoyment of visitors and residents. Closure or underfunding of these parks would result in a significant negative economic impact on our County as tourism and recreation are our most important economic drivers.

b) **Encourage communication between air districts especially as it relates to smoke management.**

c) **Prioritize Wildfire Prevention and Forest Health**

Support a comprehensive approach to forest and watershed health that increases funding and capacity building for community protection, home hardening, fuels reduction and biomass development. These efforts should also consider air quality and smoke impacts, and promote communication and collaboration among air pollution control districts and land management agencies regarding smoke impacts.

d) **Disaster Prevention , Response and Recovery**

i) Support legislation that promotes the creation of both state and local disaster prevention, response and recovery planning policy and assistance programs

e) **Support legislation that promotes, protects, or facilitates the sustainability of our local agriculture**

Mono County agriculture is an important local economic driver. It provides jobs and contributes to the open-space landscape that draws visitors.

i) Reinstate Williamson Act subventions and continue to develop alternative funding measures, such as the Strategic Growth Council's Sustainable Agricultural Lands Conservation Program.

ii) Support continued and enhanced state funding for non-native, invasive plant management programs

After years of no state funding allocation, weed management area groups throughout the state will have funding opportunities in the coming budget year. These programs are critical to the protection of our local and statewide environment, and have proven positive effects on natural fire regimes, species diversity, watershed health, and many other concerns. State funding for these programs should be maintained and enhanced if possible.

f) **Support continued and enhanced state funding for non-native, invasive plant management programs**

After years of no state funding allocation, weed management area groups throughout the state will have funding opportunities in the coming budget year. These programs are critical to the protection of our local and statewide environment, and have proven positive effects on natural fire regimes, species diversity, watershed health, and many other concerns. State funding for these programs should be maintained and enhanced if possible.

g) **Ensure full funding of California Department of Fish and Wildlife Hatchery and Inland Fisheries Program (AB 7 - 2006)**

In 2006, AB 7 dedicated by law one third of all sport fishing license fees to be used for adequate stocking of Department of Fish and Wildlife Hatcheries. Beyond the funding dedication, AB 7 dictated the size of fish to be stocked. Recent California Department of Fish and Wildlife (CDFW) actions, as well as state budget actions, have reduced the size of the stocking fish and not fully directed the fee funding to this program. Mono County supports the original intent including all funding being directed to the state hatchery program, fish size, and reproducing diploid fish countywide as described in the original legislation.

h) **Support budget appropriations to modernize and maintain the state hatchery system.**

i) **Support a balanced approach to regulating fishing**

Support a fishing season in the Eastern Sierra that provides economic opportunity while maintaining the balance of environmental health and sustainable fisheries and requires California Department of Fish and Wildlife (CDFW) to notify local government of proposed fishing regulation changes.

j) **Support sustainable fishing**

Support the funding of efforts to enhance the fish population in Mono County including sustainable fishing, ongoing fish stocking, education for proper catch and release practices, protection of spawning waterways, and support of the California Department of Fish and Wildlife (CDFW) stocking of diploid trout in allowable waters.

k) **Support bio-energy action plan development**

Encourage the various state agencies involved to continue evolving this field of work to produce and permit cleaner, more affordable technology based on sustainable and healthy forestry principles in a manner that benefits rural Sierra economies. Mono County has encouraged state agencies, such as the Sierra Nevada Conservancy (SNC) and California Energy Commission (CEC) to provide funding for project scoping and planning.

l) Support legislation and funding that eases the burden of implementing the Sustainable Groundwater Management Act, including creating necessary infrastructure in rural, sparsely populated areas

The Sustainable Groundwater Management Act provides for local agencies to develop groundwater sustainability plans and, pursuant to those plans, sustainably manage groundwater resources. The funding mechanism for these activities provided in the law is for local agencies to impose fees on water users. Areas in Mono County that have been subject to the Act in the past are sparsely populated and primarily in agricultural production. Accordingly, very few individuals (less than a dozen) would have to bear the significant burden of funding compliance with the Act, should it apply again in the future, which would endanger the viability of Mono County's agricultural operations.

m) Continued engagement in Bi-State Sage Grouse conservation efforts

Mono County appreciates the State's increased role in sage-grouse conservation efforts and addressing the threat posed by the Los Angeles Department of Water and Power's (LADWP's) management of water in Long Valley, a key habitat area for the South Mono Population Management Unit. The California Department of Fish and Wildlife is a significant player in this conservation effort. Ultimately, continuation of the collaborative multi-party partnership, including the cooperative engagement of LADWP, would be the ideal outcome to ensure the health and viability of sage grouse populations. If the bird is ultimately listed, the result would be an additional regulatory burden with devastating impacts to Mono County's agricultural and recreational activity-based economy.

n) Climate and drought resiliency

Support measures that provide funding and resources to develop drought and climate resilient water supplies in California, such as water recycling and reuse, leak and loss prevention/remediation and other solutions to enhance the State's water resources in order to reduce reliance on increasingly unpredictable precipitation amounts.

4) Public Safety and Criminal Justice

a) Advocate to prevent adverse local impacts from cannabis and hemp legislation

Advocate for local control, taxation and funding for addressing the environmental, land use, and public safety impacts of the cultivation of cannabis and hemp.

b) Ensure State realignment & cost-shifts

Continue to ensure successful implementation of the broad array of programs transferred to county jurisdiction under the 2011 Public Safety Realignment, including appropriate distribution of AB 109 funding. Support state policy changes that will allow for greater

administrative and program flexibility for county programs associated with this shift of responsibility.

c) Support of rural fire districts

The population of Mono County is highly rural and dependent upon voluntary associations that provide basic emergency services. These volunteer fire districts provide services to residents and tourists, and they are often the first responders to accidents. Support relief for rural fire districts.

d) Advocate for Community Paramedicine

Advocate for the State Emergency Medical Services Agency (EMSA) to expand the current number of EMS Programs participating in the Community Paramedicine Demonstration Project.

e) Advocate for legislation to extend the age for juvenile services from 18 through the age of 20

Neuroscience supports that brain development continues until the age of 23.

f) Support legislation that provides financial support to probation

Provide financial support to probation to include more evidence-based services and incentives for both adults and youth.

5) Transportation and Infrastructure

a) Support action for transportation funding

Support the multiple transportation funding sources that provide for improved transportation systems and multimodal networks, including SB 1 as enacted and delivery of projects that rehabilitate and improve local roads and related infrastructure.

b) Support State highway access

Mono County supports budget policy and legislation to fund rehabilitation of the Bodie Road (Highway 270) that provides access to Bodie State Park and to facilitate early Sierra Pass openings (including Highways 120 and 108).

c) Support complete streets and walkable community principles

Mono County is a strong supporter and advocate of the complete streets and walkable community principles in the 2040 California Transportation Plan. This focus is a transportation paradigm and culture shift that will impact projects from initiation to completion and maintenance. Recently, local jurisdictions have been increasingly tasked

with the funding and maintenance of complete street features on state facilities such as state highways. These maintenance responsibilities lie with the state, and a corresponding shift in the functioning and funding of Caltrans is needed to ensure success of complete street designs.

d) Support broadband deployment and communications systems improvements

Leverage existing work efforts focused on broadband infrastructure investments and deployment projects to further increase access to Gigabit broadband throughout the County. Advocate and work to improve communication systems including:

- i) Implementation of the California Broadband Council's "Broadband for All Action Plan," including, but not limited to, support for enactment of SB4 and AB14;
- ii) Plain Old Telephone Systems (POTS) system reliability;
- iii) Reliable 911 service, the NextGen 911 transformation (including the leveraging of broadband for improving 911), 211 service, and public notification and warning services;
- iv) Cellular-based communication systems and networks including those designed for commercial and public safety use (such as FirstNet);
- v) Policies, programs, and funding opportunities for other public safety communication platforms, including but not limited to Land Mobile Radio;
- vi) Appropriate and effective definitions of 'broadband' which recognize the importance of technology and dependence on the internet for public safety and economic development;
- vii) Legislation and associated programs that provide funding for broadband infrastructure projects and adoption/education efforts.

e) Investor-Owned Utility Wildfire Mitigation and Public Safety Power Shutoff (PSPS) policy

In coordination with local allied agencies and community organizations, advocate for policies and practices which ensure public safety while recognizing and addressing the unique challenges of PSPS events in a tourism-driven rural environment. Encourage utilities' investment in infrastructure hardening, grid modernization, and situational awareness tools.

6) Administrative and Fiscal Services

a) Support Clerk/Recorder Services and Elections Administration improvements

Support resources for improving county record keeping services and election administration, and monitor legislation that may impact the following:

- i) Recording fees and process, and recorded documents;
- ii) Vital statistic fees and process;
- iii) Public records;

- iv) Unfunded mandates;
- v) Vote-by-mail, voter registration, election management systems, elections process, and election equipment;
- vi) Funding for records preservation (such as Board of Supervisors historic records);
- vii) Funding for modernization of elections equipment.

b) Support Vote-by-mail legislation

Support legislation to authorize vote-by-mail ballot elections for rural counties.

c) Support leveraging SB2 Recording fees to return to Mono County for housing.

d) Support the full funding of all Payment In Lieu of Taxes (PILT)

Support legislation and budget efforts that provide for payment of past due balances and continue to maximize the PILT revenue to counties and maintain full funding of PILT without restrictions beyond the current authorization.

e) Oppose legislation that would limit and/or impose significant procedural or substantive barriers to counties' ability to contract for services.

7) Health and Human Services

a) Support accurate, adequate, flexible, and stable funding and regulatory interpretation to best meet Federal/State Health and Human Services program requirements

These include Child Welfare Services, Mental Health Services, Substance Use Disorder Services, Human Services, Adult Protective Services, In-Home Supportive Services, California Children Services, and Health Reform. In addition, support new innovation by maximizing flexibility in program design, increase Federal/State funding leveraging opportunities, and streamline State program requirements and regulations including those serving specialized needs due to COVID-19.

b) Support client access permitting online engagement and electronic interviews to reduce cost, increase participation and reduce duplicative eligibility processes.

c) Support funding opportunities for environmental health regulation

Support funding opportunities including fees for State mandates related to environmental health regulation of food establishments, sewage disposal facilities, water systems, well construction, swimming pools, and recreational health facilities, occupied housing, underground storage tank facilities, solid waste facilities, land use development, rabies and vector control, and the management of hazardous waste/materials.

d) Support legislation that provides funding for the Local Primacy Agency (LPA) program that ensures safe drinking water to residents

The LPA program provides local oversight of small public water systems (SPWS) in Mono County. This program is implemented by the Environmental Health Division of the Public Health Department. Currently, program costs are offset by annual permit fees collected from the SPWS and by Public Health Realignment. The revenues do not cover the costs of this program.

e) Support funding opportunities for Mono County's CUPA Program

The California Unified Program Agency (CUPA) is implemented by the Environmental Health Division of the Public Health Department. Funding for this program is provided through environmental health fees and Public Health Realignment. In the past, the CUPA was provide grant funding through Cal EPA to offset costs incurred in implementing the program. This grant funding was subsequently discontinued last year. Negotiations are ongoing to reinstitute this funding program.

f) Support legislation for public health programs

Support legislation and programing, and advocate for upstream approaches to health and preventative public health programs including Maternal, Child, and Adolescent Health (MCAH), Oral Health, Tobacco Education, Women, Infants and Children (WIC), Emergency Preparedness, Communicable Disease, HIV/STDs, and Immunizations.

g) Support revenue opportunities and increased flexibility with State allocations for local public health departments

With rising costs of business, the Mono County Health Department's expenditures are now greater than its revenues. With a decline of Public Health Realignment funds since 2007, these dollars no longer cover the cost of fulfilling mandates, backfilling State grants, and addressing local health priorities. Opportunities include increasing revenues through State allocations and advocating for a broader, less restrictive scope of work which can be tailored to a community's unique health needs.

h) Support public health fiscal sustainability in rural counties in the form of relaxed programmatic FTE requirements and indirect cost rate caps

Health programs are continually evolving and new opportunities to improve community wellness are on the rise. Rural counties face unique recruitment and retention challenges and much of the prospective funding comes with strict FTE requirements and/or caps on what can be reimbursed in indirect costs. Funding allocations usually do not provide enough resources to hire new staff and the majority of existing staff manage or support multiple public health programs. Additionally, funding allocations do not cover the true cost

of the program, especially overhead costs, leading to difficult decisions about implementing programs that have been recognized as a need in our rural communities.

i) Support legislation for health providers

Support legislation and advocate for increasing the number of dental and medical providers in rural counties, especially those who accept Medi-Cal and Denti-Cal insurance.

j) Advocate for a level of funding that enables counties to properly administer the Medi-Cal program on the state's behalf.

k) Support improvements to Medi-Cal

- i) Support the streamlining of Medi-Cal administration and improve access to health coverage for uninsured families.
- ii) Support five-year continuous medical eligibility for children and one-year continuous eligibility for mothers.

l) Support legislation that would increase the number of volunteer Emergency Medical Technicians

Current licensing requirements are onerous and deter volunteer first responders from seeking EMT licenses.

m) Provide a State funding stream for county spending on Public Administrator/Public Guardian/Public Conservator (PA/PG/PC) programs

County Public Administrator, Public Guardian and Public Conservator (PA|PG|PC) programs provide critical safety net services to the most vulnerable adult Californians. The PG/PC provides protective services to individuals with diminished capacity to make decisions due to cognitive impairments and severe mental illness. The PA function handles the disposition of deceased estates. Working collaboratively with local medical, mental health, social services, and justice providers, PA|PG|PC programs petition the Courts to be appointed the legal decision maker with regard to healthcare, psychiatric care, and/or financial management for clients who are unable to make decisions for themselves. County PA|PG|PCs are the only major county safety net programs that receive no direct State or Federal funding.

n) Support legislation that increases services and supports Child Welfare

- i) Federal Family First Prevention Services Act of 2018: Support full state funding of required program changes to enact the newly mandated child welfare system reforms related to this Act.
- ii) Support legislation that increases services and resources for caregivers of children and former foster youth who are victims of or at risk of abuse, neglect, or exploitation.

o) Support county implementation of the Continuum of Care Reform

Support adequate funding for county implementation of the Continuum of Care Reform including the recruitment, retention, and support of resource families so that they may provide stable, loving homes for children in the foster care system.

p) Support legislative, administrative and budgetary efforts that seek to maintain active and healthy independence for seniors and the disabled, including affordable housing, funding and other support for those who are homeless or at imminent risk of homelessness

q) Older Adults and Persons with Disabilities

- i) Support legislation that promotes the financial sustainability of the In- Home Supportive Services Program through programmatic changes and appropriate cost sharing mechanisms between the State and counties.
- ii) Support the continuation of federal and state funding for IHSS and oppose any efforts to shift additional IHSS costs to counties.
- iii) Support funding for the full range of aging programs that provide services to older adults including services provided by Area Agencies on Aging (AAAs), senior nutrition programs, caregiver supports, resource centers, ombudsman programs, and home and community-based supports.
- iv) Support legislation that would establish a comprehensive and coordinated system and provide options for long term care activities that will secure and maintain maximum independence and dignity in a home environment, remove individual and social barriers to economic and personal independence, provide a continuum of care for vulnerable seniors, and provide a comprehensive response to elder abuse/neglect and exploitation.
- v) Support legislation to increase skilled nursing facilities that are willing to accept dually diagnosed seniors with comorbid medical and mental health conditions.

r) Support efforts to develop permanent supportive housing and affordable housing

- i) Support State laws that support affordable housing and broaden the opportunities and reduce barriers for local government, and non-profit housing entities and instrumentalities of government to increase homeownership and the creation of rental housing. This includes repealing of California State Constitution Article XXXIV. In addition, support increased financing, subsidy options, and tax incentives to support development of new, affordable housing units in rural communities such as Mono County.
- ii) Support efforts to streamline funding, construction processes and land use regulations, which expedite the development of low and moderate income housing units and allow local governments to adequately plan to meet the housing needs of all economic segments of the community.

- iii) Support measures that enable seniors and the adult disabled population to obtain affordable housing and live independently.
- iv) Support additional funding for the Older Californians Act and other programs that assist older adults and caregivers.

s) **Support the enhancement of childcare and development**

Support measures that enhance the overall quality, affordability, capacity, accessibility, and safety of childcare and development programs. Specifically, support legislation and budget action that would:

- i) Ensure continuity of childcare for children and families.
 - ii) Preserve, protect and increase funding for subsidized and other government-funded childcare.
 - iii) Expand access to child care.
 - iv) Reform the reimbursement rate structure for providers.
- t) **Support measures to extend family benefits, such as Paid Sick COVID days; and expand Paid Family Leave**
- u) **Support increased funding for special education early intervention for infants, toddlers and preschoolers**
- v) **Support home visiting and whole family wellness, including but not limited to CalWORKS Home Visiting funding**
- w) **Support 15% equivalency on vape taxes for Proposition 10 (First 5)**
- x) **Support measures that seek to prevent Adverse Childhood Experiences (ACEs), address the impacts of trauma, and build resilience.**
- i) Support legislation and budget efforts that support children, youth, and families, including restoring and expanding quality childcare and preschool opportunities, homeless youth, promoting safety for all children, and mental and developmental health prevention and early intervention activities.
- y) **Support legislation to combat human trafficking**

Support legislation that will develop or enhance programs and services to combat the negative impact that human trafficking and commercial sexual exploitation of children has on victims and support efforts to provide additional tools, resources, and funding to help counties address this growing problem.

z) **Support full funding to ensure that state mandates are cost-neutral to the County and pursue revisions to streamline the process for local government.**

aa) **State Realignment & Cost-Shifts**

Oppose proposals to restructure, realign, or otherwise shift the cost of programs to local government, without commensurate compensation.

bb) **Support legislation, funding opportunities, and multidisciplinary efforts to provide harm reduction and substance use disorder services in Mono County.**

cc) **Support legislation to develop county behavioral health statewide outcomes and performance measures, inclusive of Medi-Cal and non-Medi-Cal programs (e.g. MHSA) – specialty mental health services and substance use disorders.**

i) This effort will include recommendations by data researchers and experts regarding appropriate measures to evaluate the effectiveness of county behavioral health interventions.

ii) An outcome of the plan will include identifying a standard statewide method to collect Race, Ethnicity, Language, Sexual Orientation and Gender Identity behavioral health client data, as outlined in the AB 470 Advisory Group.

dd) **Strengthen the Mental Health Services Act (MHSA)**

Support legislation proposals to review the MHSA, recognizing the importance and significant contribution this critical funding source has made to persons with mental illness. The MHSA review provides the opportunity to reflect on 15 years of MHSA implementation and find areas for improvement while preserving core MHSA services, including the crisis continuum, prevention/early intervention, and full-service partnerships. Improvements should seek to eliminate restrictive mandatory funding distributions for each component of the MHSA and ensure MHSA funds can be used for individuals with primary substance use disorder diagnoses, as well as support the protection of MHSA's current ratios and funding for small, rural counties. A review should also identify a process for the development of statewide performance and outcome measures to be reported annually to the state, the legislature and the public.

ee) **Enhance Board and Care rates to prevent further loss of critical housing for SMI clients and build out housing options**

There is a critical lack of housing in California, particularly for its most vulnerable low-income adults most at-risk of homelessness: older adults, persons with disabilities, and persons with serious mental illness (SMI). With the rapidly growing aging population and continually rising housing costs, the homeless population is expected to grow, and a larger number of the homeless population are expected to be disabled and elderly. Even more alarming, California has lost hundreds of board and care homes in recent years that are

specifically set up to serve these very populations. Los Angeles County has lost about 1200 beds since January 2016. The reimbursement rates provided by SSI/SSP are inadequate at \$35/ day and counties do not have the capacity to patch facilities at the demand needed. CBHDA proposes enhancing board and care rates through \$500 million one-time General Fund (GF), reforming punitive regulations/ enforcement of facilities by CDSS, and exploring federal waiver opportunities to fund board and cares. (Co- sponsored by CBHDA with the Steinberg Institute)

ff) Pursue Funding for Pretrial Mental Health Diversion (AB 1810)

There is an overrepresentation of individuals with SMI in the criminal justice system. All too often, individuals with SMI in crisis are inappropriately routed by law enforcement into jails and ultimately prison, instead of receiving treatment in the community. Once incarcerated, individuals living with a mental illness tend to stay longer in jail and upon release are at a higher risk of returning to incarceration than those without a mental illness. A significant number of individuals experiencing homelessness with behavioral health conditions can cycle in and out of the criminal justice system. California passed in 2018 AB 1810 which establishes pre-trial MH diversion in CA for individuals with SMI and who could be experiencing homelessness. Funding AB 1810 with \$250 million one- time GF would help alleviate strains on justice systems and break the cycle of individuals experiencing homelessness with SMI from cycling in and out of the justice system. (Co-sponsored by CBHDA with the Steinberg Institute)

gg) Support Direct Provider Reporting to DHCS

Support Legislation that would implement and improve the recommendation of the California State Auditor, to allow for direct reporting from providers to DHCS of those data currently reported to DOJ, along with additional patient data on the gravely disabled population to facilitate improved care coordination and analysis at the state level for trends and disparities.

hh) Support Outcome Measurement

- i) Support Legislation that adopts statewide Behavioral Health outcomes and performance measures, inclusive of Medi-Cal and non-Medi-Cal programs (e.g., MHSA) with CBHDA in a leadership role.
- ii) Develop and implement a standard statewide method to collect Race, Ethnicity and Language (REL) and Sexual Orientation and Gender Identity (SOGI) behavioral health client data

ii) Support SB 803

Implement the Peer Support Specialist Certification in a manner that maximizes the opportunity to diversify the county behavioral health workforce and expand the use of peers throughout the system.

8) Economic Development

a) Support new and current business development

Support legislation and programs that support economic development efforts that augment and promote business retention and expansion, as well as create an environment conducive to new business attraction.

b) Support of commercial filming

Support bills and initiatives to attract and retain film production in the state as increased filming statewide will result in commercial opportunities for commercial filming projects in Mono County.

c) Support sustainable tourism and recreation economy

Support legislation that strengthens California's sustainable tourism and outdoor recreation economy.

Federal Priorities

1) **Support Funding/Program Preservation**

Support legislative, regulatory, and budget efforts that protect and/or enhance local government revenues, maximize the County's access to federal funding sources, and/or increase local funding flexibility. Oppose legislative and administrative actions that would create federal unfunded mandates and/or preempt local decision-making authority. Strongly encourage Congress and the President to commit to negotiate successfully so as to avoid any future Federal Government shutdowns.

a) **Support Sustainable Funding for Secure Rural Schools**

Support legislation that creates a sustainable revenue stream for Secure Rural Schools, such as the Forest Management for Rural Sustainability Act.

b) **Support the full funding of all Payment in Lieu of Taxes (PILT)**

Support legislation and budget efforts that continue to maximize the PILT revenue to counties and continue full funding of PILT without restrictions beyond the current authorization.

c) **Support full federal funding for the United States Department of Agriculture (USDA) Rural Development (RD) Programs**

Support funding for community development programs and affordable housing such as the Section 502 Direct Loan Program and the necessary program staff to implement these programs.

d) **Support full and expanded federal funding for Housing and Economic Development programs**

Support the highest possible funding level for key federal housing and economic development programs, including the Community Development Block Grant (CDBG), the HOME Investment Partnership Program, and the reduction from 50% to 25% of the private activity bond cap.

e) **Support continued rural broadband deployment and communications improvements through local, State, and Federal policy advocacy, infrastructure projects, and grant programs**

Having appropriate policy at the local, State, and Federal levels is imperative to ensure adequate communications connectivity, which is a critical part of public safety and economic development. Because Mono County has dedicated resources to improve access to high-quality broadband in our communities and as a result of the completion of the Digital 395 project, roughly 90% of our households have access to Gigabit internet.

Unfortunately, several Mono County communities and residents still face barriers to connectivity as there is inadequate infrastructure to support basic Plain Old Telephone Service (POTS) telephone service, including cellular phone service, let-alone high-speed Internet. In order to improve the landscape, the County should advocate for:

- i) Policies, regulations, and enforcement around providers delivering basic POTS services to all locations desiring this service;
 - ii) Appropriate and effective definitions of 'broadband' which recognize the importance of technology and dependence on the internet for public safety and economic development;
 - iii) Legislation and associated programs that provide funding for broadband infrastructure projects and adoption/education efforts; programs and efforts that move to improve the accuracy of metrics used to represent the current state of broadband in Mono County.
 - iv) Legislation supporting digital equity, including, but not limited to the creation of affordable broadband for all.
- f) **Support legislation that promotes, protects, or facilitates the sustainability of our local agriculture**

Mono County agriculture is an important local economic driver, provides jobs, puts food on the table and contributes to the open-space landscape that draws visitors.

g) **Support Economic Development resources**

- i) Support legislation and federal programs that provide access to small business capital for local business development through the Small Business Administration, Small Business Development Corporation and other government loan and financial programs.
- ii) Support legislation and federal programs that promote locally-based business retention and expansion, as well as create an environment conducive to new business attraction.
- iii) Support initiatives to attract commercial filming opportunities to the region: in particular, budgetary allocations that increase capacity for processing special use permits on the Inyo and Humboldt Toiyabe National Forests.
- iv) Support bills, initiatives, and programs that strengthen the tourism and recreation economy, with a focus on sustainable practices.

h) **Disaster Response**

Support measures that increase resources for disaster response initiatives requiring county involvement.

2) **Natural Resources, Public Lands, and Agriculture**

Support legislation that promotes agriculture and that protects the County's quality of life, its diverse natural resources, and preserves the essence and history of the County, along with legislation that provides adequate funding for stewardship of our public lands.

a) **Support sustainable funding for federal public lands**

Support measures to sustain our federal lands. Closure or underfunding of these lands managed by the US Forest Service, Bureau of Land Management and National Park Service would result in a significant negative impact to our county as tourism and recreation are our economic drivers.

b) **Support legislation and funding to enhance outdoor recreation opportunities on public lands**

c) **Support special designations**

Support special use designations for public lands such as National Scenic Areas, Wild & Scenic Rivers, Wilderness, National Monuments, National Conservation Areas, when demonstrated conservation values and public support warrant such designations.

d) **Oppose public lands disposal**

Oppose the large-scale sale, transfer or "disposal" of public lands except for strategic, widely supported transfers or exchanges for management and boundary adjustments with demonstrated public benefit, for example community expansion in support of affordable housing.

e) **Support wildfire funding and fuels reduction**

Support immediate enactment of legislation to change the method of funding wildfire suppression on National Forests by providing access to funding outside of the statutory discretionary limits for emergency purposes and for investment in additional resources for forest management/fuels reduction to mitigate wildfire risk to communities and increase forest health.

f) **Support Wildfire Prevention and Forest Health**

Support legislation and funding for comprehensive wildfire prevention and forest health programs on public lands.

g) Support regulatory relief for Mill City Cabin Tract funding

Support administrative and legislative solutions for funding and/or regulatory relief for the cleanup of contaminated soils at the Mill City recreation residence tract on the Inyo National Forest in Mammoth Lakes.

h) Support land management directives

Support Mono County's tourism and recreation economy by ensuring funding, programs, and management directives for federal land agencies (including the Land & Water Conservation Fund) that facilitate the planning, building, and maintenance of infrastructure for sustainable recreation, travel, and commercial film permitting on public lands.

i) Support sustainable fishing

Support federal initiatives and / or funding of efforts towards enhancement of Mono County's fish population, including sustainable fishing, ongoing fish stocking, education for proper catch and release practices, protection of spawning waterways, and support of the stocking of diploid trout in allowable waters.

j) Support the control of invasive species

Support control and mitigation for the spread of invasive species to protect, conserve, and restore public and private lands.

k) Support biomass project development

Support legislation that encourages the US Forest Service (USFS) and Bureau of Land Management (BLM) to continue actively promoting and assisting with biomass project development.

l) Support alternative energy

i) Support local efforts to develop renewable, distributed energy sources including but not limited to environmentally and appropriately scaled biomass, solar, and wind, while ensuring projects and their supporting infrastructure (i.e., transmission lines, pipes lines, towers, service roads) does not degrade the County's quality of life, natural or visual resources, water or essence and history.

ii) Continue to support geothermal power production that is environmentally sustainable and doesn't negatively affect local domestic water supplies.

m) Support Devils Postpile National Monument legislative requests

Support legislation to authorize a boundary adjustment request, and to designate a portion of the Middle Fork San Joaquin River as Wild & Scenic, as described in Devils Postpile National Monuments 2015 Management Plan.

n) Support endangered species conservation

Support a balanced approach to the implementation of endangered species regulation with impacts to the rural economy and communities of Mono County. Mono County is fortunate to have a rich natural heritage that should be conserved, and it supports the need to protect and recover imperiled species. These conservation measures should be specifically tailored to the threats and circumstances in the Eastern Sierra and Mono County, and must be weighed and balanced against impacts to the fragile tourism and recreation-based rural economy and local communities. Every effort must be made to protect private property rights and avoid detrimental impacts to county residents.

o) Support sage grouse conservation

Mono County appreciates the strong support of the multi-party, collaborative Bi-State conservation effort, including several federal agencies such as the U.S. Fish and Wildlife Service, Bureau of Land Management, U.S. Forest Service (Inyo National Forest and Humboldt-Toiyabe National Forest), and U.S. Geological Survey. The coalition includes technical and scientific support, legislative and policy support, and funding to ensure conservation commitments are met and honored by federal agencies. Ultimately, continuation of the collaborative partnership requires the federal agencies to remain stalwart in their commitments with the flexibility to address new issues, such as the management of water by the Los Angeles Department of Water and Power (LADWP) in Long Valley, and adequate budgets to support a positive conservation outcome. If the bird is listed, the result could be an additional regulatory burden with devastating impacts to Mono County's agricultural and recreational activity-based economy.

p) Support legislation to avoid landfilling of waste originating on Federal Land

Develop policies and programs that successfully re-use, recycle and transform resources that originate on USFS, BLM, and DOD lands. Support policies that reduce the impacts of Federally generated waste on local jurisdictions' waste management systems, and/or support policies that enhance local systems to effectively manage Federally-generated waste.

3) Public Safety and Criminal Justice

a) Support full funding of Byrne Justice Assistance Grants

Support the preservation of funding levels for existing safety programs such as the Byrne Justice Grant (Byrne/JAG) Program and oppose efforts to reduce or divert funding away from these programs.

b) Support continued funding of FEMA’s Assistance to Firefighters Grant (AFG) program

Support continued funding to enhance the safety of the public and firefighters with respect to fire-related hazards by providing direct financial assistance to eligible fire departments, nonaffiliated Emergency Medical Services organizations, and State Fire Training Academies. This funding is for critically needed resources to equip and train emergency personnel to recognized standards, enhance operations efficiencies, foster interoperability, and support community resilience.

c) Support legislation that resolves the conflict federal statutes have with legalization of recreational cannabis use in California

This includes removing cannabis as a schedule 1 drug and providing cannabis businesses with access to business banking services by changing federal banking access laws. Barring a legislative solution by Congress, the County supports reinstatement of the concepts stated in the past Justice Department memorandums allowing for commercial cannabis activities to operate free and clear of federal enforcement interference so long as the County has a robust regulatory framework in place.

d) Urge common-sense gun safety legislation.

e) Support sustainable Federal Aviation Administration (FAA) funding for airport safety related projects on public and private property on or near our airports.

4) Transportation and Infrastructure

a) Ensure that federal transportation formulas support rural road infrastructure

Mono County relies on the network of state highways and locally maintained roads to link residents to essential services. Transportation funding formulas should provide funding protections or guarantees for California’s rural transportation system and reflect that rural counties lack viable means to fund larger projects that provide statewide benefit. We must advocate for formulas that distribute federal funds to support local transportation priorities.

b) Support efforts to protect the Highway Trust Fund

Support efforts protecting the Highway Trust Fund and programs that provide funding for local roads, bridges, and transit initiatives including pedestrian and bicycle systems, and other multi-modal transportation programs.

c) **Provide funding that maintains and enhances regional access across Federal Lands and National Parks**

Mono County supports budget policy and legislation that maintains, enhances, and extends the operational season of roads crossing federal lands and National Parks that provide access to communities, federal lands, national parks and monuments.

d) **Support Yosemite Area Regional Transportation and Eastern Sierra Transit Authority funding**

Support efforts to seek sustainable funding for regional public transportation to Yosemite National Park, other National Parks in our region, and other public lands destinations throughout the Eastern Sierra.

e) **Support the resurgence of the Scenic Byway program**

Mono County completed a Scenic Byway Corridor Plan through a federal grant, then shelved the plan because the Scenic Byway program was not funded. The program has been re-established, and continuity of funding is needed for jurisdictions to dust off inactive plans, program their implementation into the workflow again, and being making an impact.

5) **Health and Human Services**

a) **COVID 19**

Support and advocate for any legislative or budgetary action, including stimulus money and direct funding for counties, related to the response, recovery and/ or economic impacts of COVID-19 during both the emergency and throughout the long-term effects of the pandemic.

b) **Disaster Response**

Support measures that increase resources for disaster response initiatives requiring county involvement.

c) **Support Cost-Neutral Federal Mandates**

Support full funding to ensure that federal mandates are cost-neutral to the County and pursue revisions to streamline the process for local government.

d) **Oppose legislation to repeal the Affordable Care Act (ACA)**

Work to preserve and expand the number of citizens currently receiving health insurance. Oppose efforts to reduce benefits and block grants or other actions that would shift the current federal/state cost and responsibility to the states and counties.

e) **Ensure that Affordable Care Act (ACA) funding is maintained for local governments**

Support the Prevention and Public Health Fund of the ACA, the nation's first dedicated mandatory funding stream for public health and prevention activities, which supports Mono County health care services to underserved residents.

f) **Medi-Cal Funding**

Support all efforts to adequately fund the federal Medicaid program. Similarly, oppose all efforts to block grant, cap or otherwise reduce federal and state funding to support this critical safety net program.

g) **Administration of the Medi-Cal program**

Fully fund county costs for County administration of the Medi-Cal program.

h) **Managed Care Medi-Cal**

Advocate for a Medi-Cal Managed Care model that generates high healthcare quality scores, increases primary care capacity, improves coordination of care, and conducts outreach to enroll uninsured populations.

i) **Oppose other eligibility changes, including but not limited to elimination of retroactive benefits or grace periods for eligibility pending verifications.**

j) **Oppose turning Medicaid over to States**

Oppose efforts to turn Medicaid (Medi-Cal in California) over to the states with less federal funding.

k) **Support full funding of programs that provide health insurance to children.**

l) **Support funding of Veterans benefits**

Support provision and funding for current benefits and health care programs for Veterans.

m) **Support Women's Rights to Health**

Health care is key to women's well-being and economic stability. Support provisions that make sure new health care law works for women.

n) **Support Child Welfare**

i) **Federal Family First Prevention Services Act of 2018**

Advocate for full federal and state funding of the Federal Family First Prevention Services Act of 2018 (P.L. 115-123) enacted to reform the federal foster care system.

- ii) Support efforts to reform child welfare financing, including expanding the types of prevention activities eligible for the IV-E foster care financial match.
- iii) Support a provision allowing for “skyping” with non-minor youth in the extended foster care program when the youth is attending college or living in another state or out of country as an alternative to monthly, in-person visits.
- iv) Support increased federal funding for services and income support needed by parents seeking to reunify with their children in foster care.
- v) Support increased federal financial support for programs that assist foster youth in the transition to self-sufficiency, including post- emancipation assistance such as secondary education, job training, and access to health care.
- vi) Support retaining the entitlement nature of the Title IV-E Foster Care and Adoption Assistance programs and eliminate outdated rules that base the child's eligibility for funds on parental income and circumstances.
- vii) Support legislation that would provide tax credits to companies that hire current or former foster youth.
- viii) Support increased federal funding to respond to the service needs of youth who are victims of commercial sexual exploitation.
- ix) Support working families and reduce childhood poverty through legislation to retain and expand the Earned Income Tax Credit.

o) Support legislation to combat human trafficking

Support legislation that will develop or enhance programs and services to combat the negative impact that human trafficking and commercial sexual exploitation of children has on victims and support efforts to provide additional tools, resources, and funding to help counties address this growing problem.

p) Support the enhancement of childcare and development

Support measures that enhance the overall quality, affordability, capacity, accessibility, and safety of childcare and development programs. Specifically, support legislation and budget action that would:

- i) Ensure continuity of childcare for children and families.
- ii) Preserve, protect and increase funding for subsidized and other government-funded childcare.
- iii) Waive family fees, increase vouchers, and establish "crisis factor" stipends

q) Immigration Reform

- i) Support immigration reform efforts that would create pathways to full and equal citizenship.
- ii) Oppose immigration reform efforts that would restrict the rights of immigrants or break up families, or that would focus on a mass deportation of undocumented immigrants.

r) **Oppose Legal Immigrant Benefit Changes**

- i) Oppose any efforts to include non-cash benefits in the definition of ‘public charge’.
- ii) Oppose any efforts to further restrict legal immigrants’ access to federal benefits.

s) **Temporary Assistance for Needy Families (TANF) Reauthorization**

- i) Support increased federal support for TANF/CalWORKS subsidized employment programs.
- ii) Support more flexible work participation requirement measures to give credit for client engagement and for work activities not meeting the current thresholds.
- iii) Support the ability of states to provide and receive federal support for vocational education and career technical training for longer than 12 months.

t) **Supplemental Nutrition Assistance Program (SNAP)**

- i) Oppose proposed rules to limit eligibility, reduce benefits and/or limit state and county flexibility in administering the Supplemental Nutrition Assistance Program (SNAP/CalFresh).
- ii) Oppose efforts to block grant or otherwise limit the federal contribution to SNAP/CalFresh.
- iii) Oppose federal mandates to require states to increase SNAP/CalFresh work requirements.
- iv) Support a thorough review and updates to the U.S. Department of Agriculture’s (USDA) Thrifty Food Plan (TFP) to more accurately account for the cost of food, dietary needs, purchasing patterns and regional differences in food costs, housing and medical care, which affect the purchasing power of Supplemental Nutrition Assistance Program (SNAP) benefits.
- v) Support increased nutritional supplementation efforts at the state and federal levels, including increased aid, longer terms of aid, and increased access for those in need.
- vi) Support extending Able Bodied Adults Without Dependents work requirement waivers for as many counties and sub-county regions as possible.
- vii) Support further collaboration with the federal government and national partners to increase outreach and enrollment for SNAP/CalFresh, especially in underserved populations such as students, former foster youth, non-English-speaking populations and seniors.
- viii) Support provisions to further streamline and simplify federal requirements for SNAP/CalFresh recipients to enhance enrollment and retention.
- ix) Support additional flexibility for states to align SNAP/CalFresh eligibility and processes with state TANF/CalWORKS programs.
- x) Support efforts to improve timeliness of data provided by the Food and Nutrition Services (FNS) to states for use in administering SNAP/CalFresh.

u) **Support Adult and Disability Services**

Support legislation that would provide adequate funding such as state-only funded programs, programs authorized under the Older Americans Act, a return to full funding for Social Services Block Grant (SSBG) programs and increases to the SSBG allocation to keep up with inflation and population growth.

v) **Support Homelessness Legislation**

Support federal homelessness legislation funding an array of services to individuals and families at risk of or who are experiencing homelessness.

w) **Support State and Federal funding and regulatory changes or guidance that supports landlords and tenants, and prevents homelessness resulting from COVID-19 related financial impacts.**

County Attractions



TOP ATTRACTIONS

YOSEMITE NATIONAL PARK Drive California's highest pass to Yosemite's east entrance—just 12 miles from Lee Vining—for ten-story waterfalls, iconic granite domes, rock climbing, hiking, and more (pass closed in winter). www.NPS.gov/yose • 209-372-0200 • Bus service: www.Yarts.com

MONO LAKE This ancient inland sea with its unique limestone formations and alkaline waters is home to hundreds of bird species! Learn more at: *Mono Basin Scenic Area Visitor Center* 760-647-3044 • *Mono Lake Committee* www.MonoLake.org • 760-647-6595

DEVILS POSTPILE NATIONAL MONUMENT Located near Mammoth Lakes, Devils Postpile is one of the world's finest examples of columnar basalt formations. www.NPS.gov/dpo • 760-924-5500



BODIE STATE HISTORIC PARK With about 200 buildings still standing—thanks to ongoing preservation efforts—keep an eye out for spirits roaming the once-wild streets of this genuine gold-mining ghost town. www.Parks.CA.gov • 760-647-6445 www.BodieFoundation.org

WHAT LIES BEYOND?

When the things right in front of us turn invisible and the everyday loses its magic, you know it's time to go beyond.

Beyond the traffic, the deadlines and the incessant chatter of so-called civilization.

A journey to Mono County will take you to a California you didn't even imagine existed. A land of lava and ice, sparkling clear waters, miles of hiking trails and dozens of secret fishing holes.

Discover rock formations from another world at Mono Lake and Gold Rush history at Bodie ghost town. You'll also find genuine local hospitality, like a welcome from another era.

It takes a bit of traveling to get here, but that's the way we like it. Because once you're out here, you'll start to see again.

Welcome to Mono County: California's Great Beyond.

TOWNS & COMMUNITIES

BENTON HOT SPRINGS Soak in hot tubs fed by natural hot springs at the Historic Benton Inn. Once a bustling Wells Fargo stagecoach station, Old Benton offers a self-guided tour of numerous original buildings, historic sites and the cemetery.

BRIDGEPORT Gateway to Bodie ghost town and home of the county seat, Bridgeport's iconic courthouse has been in use since 1880. The California state-record brown trout, at 26 lbs 8 oz, was caught in Bridgeport's Twin Lakes.

CONVICT LAKE / MCGEE CREEK Dramatically situated under towering Mt. Morrison, Convict Lake is loved by anglers, hikers, and...wedding parties! Catch wildflowers or fall colors at McGee Creek Canyon—hiking or on horseback.

CROWLEY LAKE Fishing season opener's home base, this expansive lake offers world-class trout fishing.

JUNE LAKE Tucked away at the base of 10,909-ft. Carson Peak, June Lake is a scenic mountain hideaway. Famous for trout fishing and brilliant fall colors, the June Lake Loop is a snowy retreat in winter. June Mountain Ski Area offers free lift tickets every day, all winter long for kids age 12 and under.

LEE VINING Overlooking dramatic Mono Lake, Lee Vining is the gateway town to Yosemite National Park—just 12 breathtaking miles up Tioga Pass Road/SR 120.

MAMMOTH LAKES Mammoth Mountain Ski Area consistently ranks as one of the top winter sports destinations in North America. In the town of Mammoth Lakes, you'll find quaint shops, gourmet restaurants and accommodations from cozy cabins to four-star luxury hotels.

ROCK CREEK / TOM'S PLACE With beautiful Little Lakes Valley hiking trail, fall colors and winter "Adventure Dining" at Rock Creek Lodge—complete with snowmobile taxi—Rock Creek Canyon is magical all four seasons.

TOPAZ At the northern tip of the county, Topaz Lake boasts a nine month fishing season, a big cash derby and a Nevada casino.

WALKER AND COLEVILLE Ranch towns in the northern part of Mono County, Walker and Coleville host California's only ATV/UTV Jamboree every September!

VISITOR AMENITIES

LODGING With more than 140 hotels, motels, bed & breakfast inns, cabins and campgrounds, Mono County has a diverse lodging base—from deluxe spa hotels to rustic cottages and scenic RV parks.

DINING There are more than 100 restaurants, cafés, pubs and bakeries to choose from throughout Mono County, with options ranging from traditional comfort food to delicious ethnic cuisine and fine dining.

SHOPPING If you're looking for Macy's, you won't find it in Mono County! However, with over 125 stores to browse through, you'll find intriguing shops, art galleries, Native American crafts, fishing and sports gear, and unique souvenirs in every community.

MUSEUMS The Mono County Museum in Bridgeport, Mono Basin History Museum and Upside-Down House, Hayden Cabin in Mammoth Lakes and Benton Historical Society all bring the region's rich history to life with unique exhibits.

VISITOR INFORMATION Mammoth Lakes Welcome Center, Mono Basin Scenic Area Visitor Center and Mono Lake Committee Information Center in Lee Vining, as well as the Bridgeport Ranger Station provide maps, guide books, permits, and visitor info.

TOP MONO COUNTY ACTIVITIES

SUMMER

Hiking, Backpacking & Rock Climbing
Fishing & Camping
Mountain Biking & Road Cycling
Kayaking & Canoeing
Horseback Riding
ATVs & Off-Highway Vehicles

WINTER

Skiing & Snowboarding
Cross Country Skiing
Snowshoeing & Ice Skating
Snowmobiling
Dog-Sledding
Sledding & Tubing

FAMOUS FOR FALL

Mono County and the surrounding Eastern Sierra provide the best show of brilliant golden-orange-crimson fall colors in the western United States. Our natural landscape in the Eastern Sierra, where rugged granite canyons are carved by rushing streams and framed by an azure sky, offers a spellbinding contrast of colors during autumn. Photogenic aspens, willows, and/or cottonwoods show off their colors from late September through October at Rock Creek, McGee Creek, Convict Lake, June Lake Loop, Lundy Canyon, Virginia Lakes, Green Creek in Bridgeport, Sonora Pass, and the West Walker River. For a free Eastern Sierra Fall Color guide, and for current fall color updates, please visit MonoCounty.org.



DRIVE Mono County is situated along beautiful Scenic Byway US 395—a few hours' drive from Los Angeles, San Francisco and Las Vegas.

FLY Scheduled commercial air service to Mammoth Yosemite Airport (MMH) will not be available in Summer/Fall 2021. Regularly scheduled commercial flights to Bishop Airport (KBH) from major west coast cities are projected to begin in December 2021. Chartered airlines/private aircraft will continue to utilize Mammoth Yosemite Airport (MMH). As soon as detailed information regarding Winter 2022 air service and scheduled flights to the Eastern Sierra are available, updates will be posted at www.MonoCounty.org/plan-your-trip/Transportation, www.VisitMammoth.com/Flying, and www.BishopVisitor.com.

DRIVING DISTANCES AND TIMES

Reno	2.5 hours	140 miles / 225 km
San Francisco	5.5 hours	250 miles / 402 km
Los Angeles	5.5 hours	330 miles / 531 km
Sacramento	4 hours	220 miles / 354 km
Las Vegas	5.5 hours	340 miles / 547 km
Yosemite Valley	2 hours	75 miles / 121 km

*All mileages and times are from Lee Vining, CA. *East-west mountain passes (Highways 120 East/Tioga Pass, 108/Sonora Pass and 89/Monitor Pass) are closed in winter due to snow and usually open before Memorial Day.*

For more info and a FREE Visitor Guide, visit www.MonoCounty.org | 800-845-7922



Elected State Representatives:

<p>Assembly Member Frank Bigelow 5th Assembly District State Capitol, Suite #4153 Sacramento, CA 94249 Capitol Office Phone: (916) 319-2005 District Office Phone: (559) 673-0501 Website: https://ad05.asmrc.org</p>	<p>Senator Andreas Borgeas 8th Senate District State Capitol, Room 3082 Sacramento, CA 95814-4900 Capitol Office Phone: (916) 651-4008 District Office Phone: (559) 243-8580 Fax: (916) 651-4908 Website: http://borgeas.cssrc.us/</p>
<p>Governor Gavin Newsom State Capitol, Suite 1173 Sacramento, CA 95814 Phone: (916) 445-2841 Fax: (916) 558-3160 Website: http://gov.ca.gov/</p>	

Elected Federal Representatives:

<p>Senator Alex Padilla United States Senate Russell Senate Office Building, Suite B03 Washington, D.C. 20510 Phone: (202) 224-3553 Fax: (202) 224-2200 Website: http://padilla.senate.gov/</p>	<p>Senator Dianne Feinstein United States Senate 331 Hart Senate Office Building Washington, D.C. 20510 Phone: (202) 224-3841 Fax: (202) 228-3954 TTY/TDD: (202) 224-2501 Website: http://feinstein.senate.gov/</p>
<p>Representative Jay Obernolte 8th Congressional District 1029 Longworth House Office Building Washington, DC 20515 Phone: (202) 225-5861 Website: http://obernolte.house.gov/</p>	



County of Mono
Post Office Box 696
Bridgeport, California 93517
(760) 932-5410
www.mono.county.ca.gov

