

*Item available for public inspection in the Clerk's office during regular business hours (Monday - Friday, 9 AM - 5 PM)*

**February 20, 2024**

**Regular Meeting**

**Item #7i. - Presentation**



A person wearing a helmet and dark winter gear is riding a snowmobile on a snowy mountain slope. The snow is covered in numerous tracks from other snowmobiles. In the background, there are rocky mountain peaks and some evergreen trees. A large, semi-transparent blue rectangle is overlaid on the center of the image, containing white text.

# Inyo National Forest Over Snow Vehicle (OSV) Subpart C



Forest Service “Travel Management” rules require the INF to designate roads, trails, and areas that are open to snow mobile use.

\*Snow mobile use is covered under “Subpart C”

*Status Quo (without subpart C)*

**The entire Inyo NF is open to OSV use, except where it is specifically prohibited.**



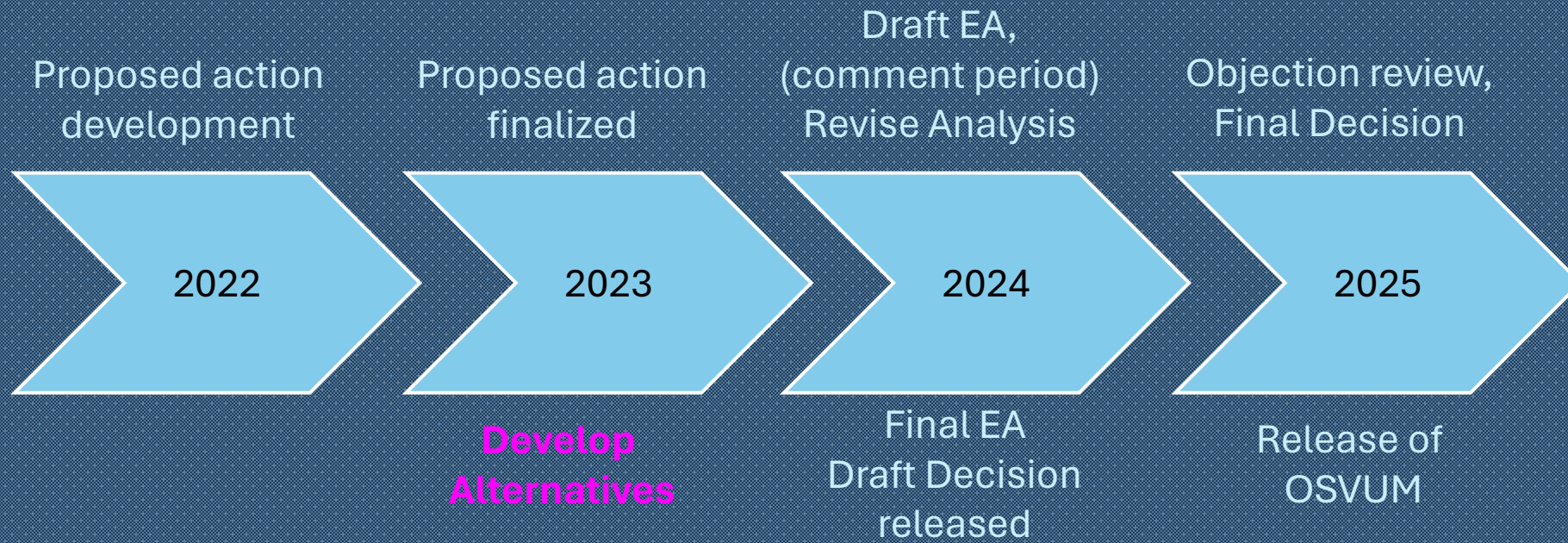
The purpose of this project is to effectively manage over-snow vehicle (OSV) use on the INF by using the required criteria (36 CFR 212.55):

- \*Minimize impacts to natural and cultural resources
- \*Ensure that OSV use is designated only where there is adequate snow
- \*Minimize conflicts among various uses
- \*Provide access & recreational opportunities
- \*Promote safety of all users

*How subpart C will change the status quo:*

**All areas not specifically designated for OSV will be CLOSED to OSV use.**





## Current proposed action

\*Designates ~305,000 acres in 16 areas

\*~1,300 miles of ungroomed OSV trails

\*~107 miles of groomed trails

\*Proposed management actions to reduce resource damage

\*Proposed activities to support enforcement, monitoring, facility maintenance, etc.



# Why is Mono County involved?

## Cooperating Agency

*“Any Federal, State or Local agency that has jurisdiction by law or special expertise (40 CFR 1508.5)*

*\*Jurisdiction by law means the agency has authority to approve a proposal*

*\*MoCo Road ownership*

*\*Special expertise is more than just having an interest in a Federal action*

*\*Use data, recreation etiquette and site management considerations*

*\*By Federal regulation, the INF reserves exclusive decision-making authority on all decisions during the planning process*





# Why is Mono County involved? Cooperating Agency

## Responsibilities

- \* Participate in conversations to review the proposed action and develop alternatives, as invited:
  - \* Provide data as requested
- \* Consideration of County owned roads w/in INF

## What's next?

- \* Internal discussions of Mono County's role within the subpart C process
- \* Consider joining the process as a Cooperating Agency
  - \* Agreement as a future Board item
- \* Mono County Board of Supervisors is welcome to submit a formal letter or comment



A person wearing a helmet and dark winter gear is riding a snowmobile on a snowy mountain slope. The snow is covered in numerous tracks from other snowmobiles. In the background, there are rocky mountain peaks and some evergreen trees. A large, semi-transparent blue rectangle is overlaid on the center of the image, containing white text.

**THANK YOU! 😊**  
**Questions?**



# CSA1 Connector Trails





# CSA1 Connector Trails

Create  
**non-motorized  
multi-use  
trail system** in  
Southern Mono  
County on  
USFS and BLM  
lands





# Project Support

## Mono County General Plan

- >Coordination with CSA 1
- >Promote complimentary uses with adjoining public lands
- >Long Valley: Provide for recreational and open-space uses

**Mono County  
Regional  
Transportation  
Plan**

**Mono County  
Trails and Bikes  
Plan**

**Towns to Trails**

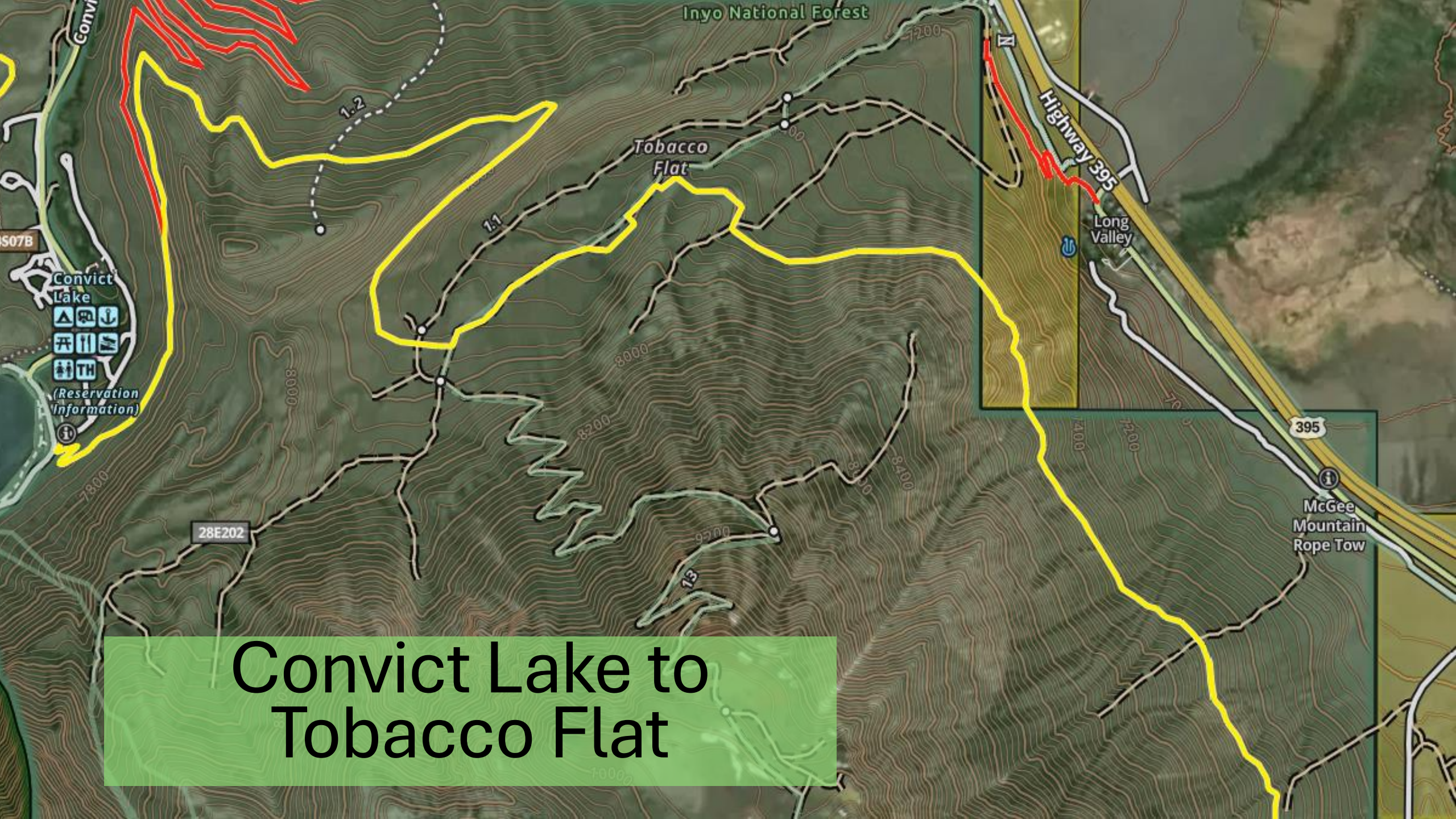
**Mono County  
SOAR Overall  
Work Plan**





# Sherwin Creek to Convict Lake

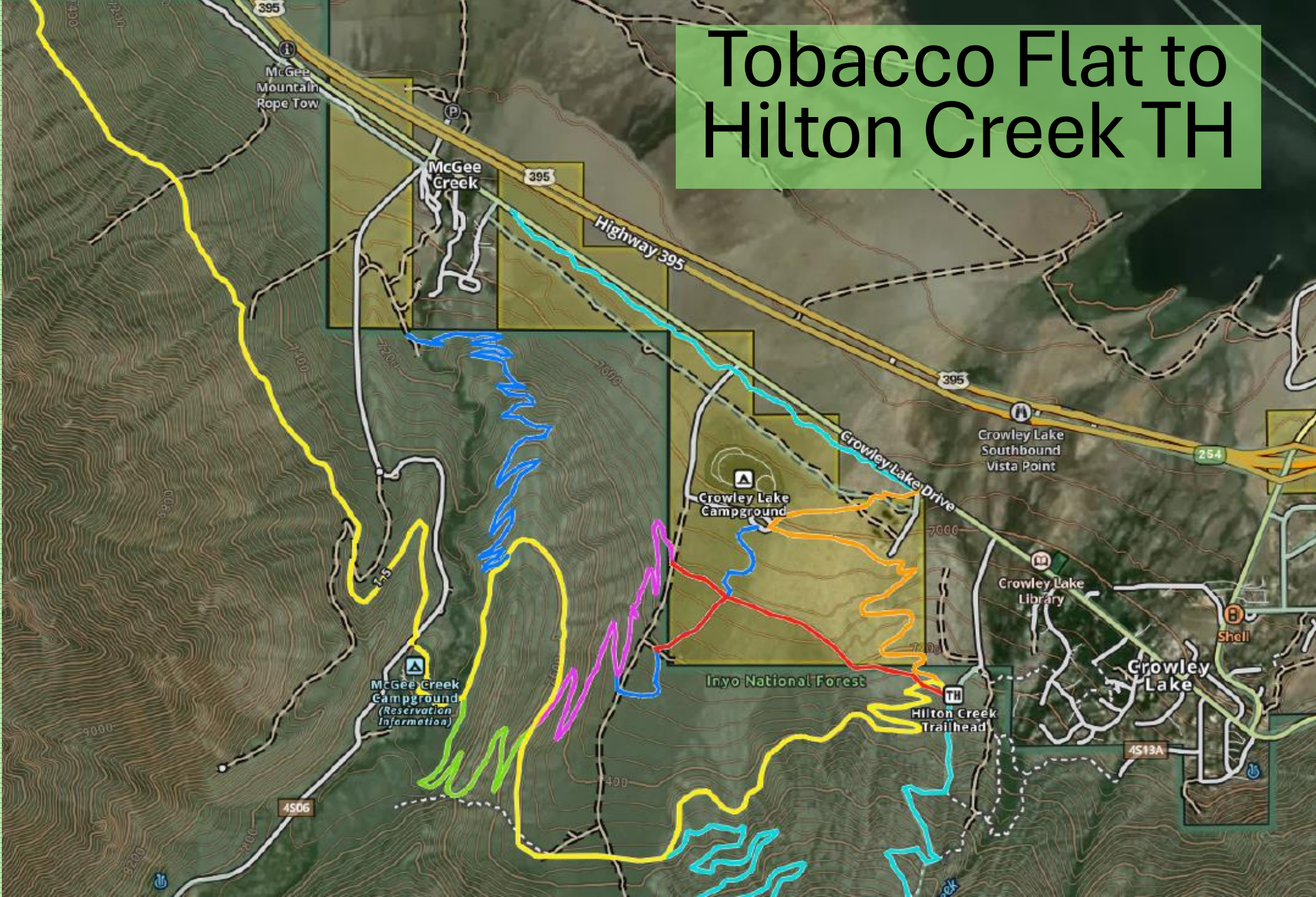




# Convict Lake to Tobacco Flat



# Tobacco Flat to Hilton Creek TH





Aspen Springs to  
Toms Place to  
Lower Rock  
Creek TH





# Project Considerations

>Project includes use of **existing trails**, **extensive construction of new trail**, and use of existing public facilities as access nodes

>Involves both NEPA and CEQA **environmental review**

>Must be accepted into the **INF and BLM's program of work**

>Proposal: Alignment, CSA1 funding commitment, participating agency roles





# Project Considerations

>Any project task within CSA1 boundaries is expected to be **funded through CSA1**

- >Staff time
- >Community outreach
- >Environmental review
- >Trail design and planning
- >Trail construction
- >Ongoing maintenance

>Additional funding through INF, BLM or grants?



## Next Steps

>Assess the INFs ranger district capacities to continually progress on this project

>Meet with the BLM, assess interest and capacity

>Develop and submit initial proposals to the INF and BLM

>Board approval

>Submitted by Mono County on behalf of CSA1, with letters of support from the community





# CSA1 Connector Trails

**THANK YOU!**



**Questions?**

