

K:\01_Mammouth\4027\June Lake Streets\CAD\IMPROVEMENT PLANS\4027_FOSTER-BREWER.dwg Jul 08, 2014 - 8:35am jvw/rlr

Copyright (C) 2014 by

 Triad/Holmes Associates.

 All Rights Reserved. This

 Document is Intended Only

 for Use on the Project

 Specified in the Title Block.

 Any Reproduction of this

 Document or Portions of

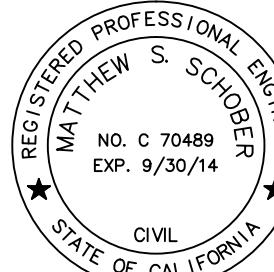
 this Document, Without the

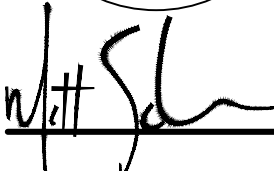
 Expressed Written Consent

 of Triad/Holmes is

 Prohibited.

PREPARED & SUBMITTED BY:





 DATE: 07/8/2014

JUNE LAKE

 STREETS REHABILITATION PROJECT

 BRENNER STREET

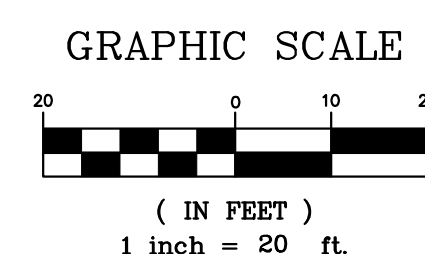
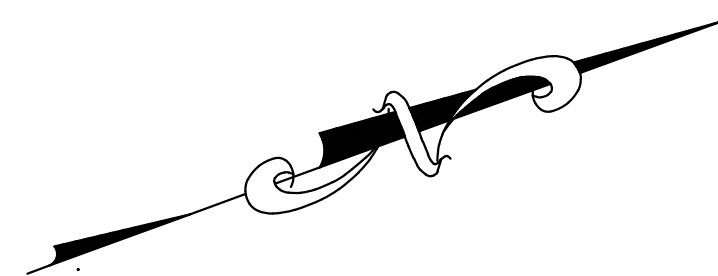
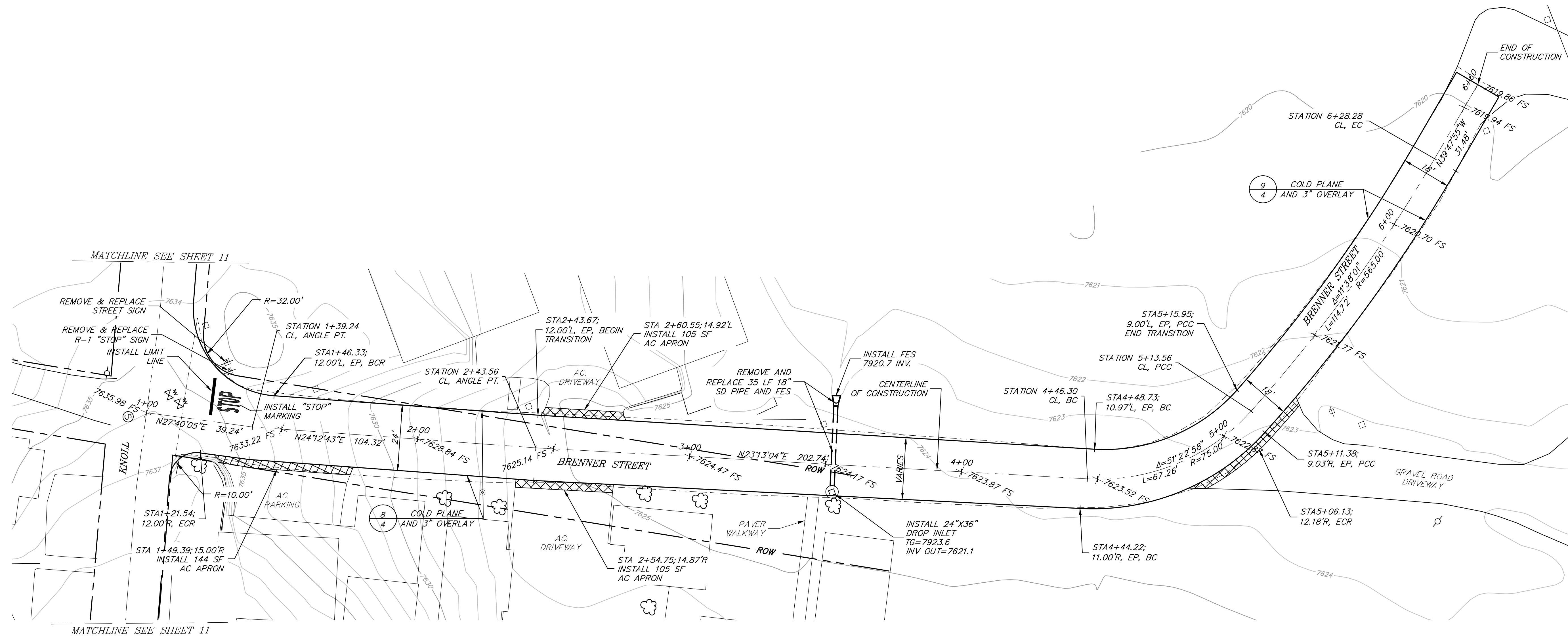
DATE JULY 8, 2014

 SCALE AS SHOWN

 DRAWN JSP/TT

 JOB NO. 01.4027

 SHEET



K:\01_Mammoth\4027\June Lake Streets\CAD\IMPROVEMENT PLANS\4027_FOSTER-BRENNER.dwg Jul 08, 2014 - 8:36am jsp/tt



triad/holmes assoc
civil engineering
land surveying
MAMMOTH LAKES
BISHOP
REDWOOD CITY
SAN LUIS OBISPO

post office box 1570
561 old mammoth rd. ste. 202
MAMMOTH LAKES, CA 93546
phone (760) 834-7288
fax (760) 834-5819
e-mail th@thainc.com

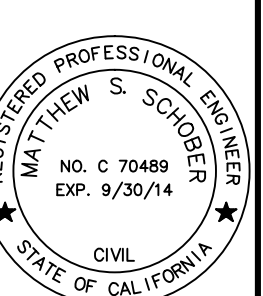
873 north main st. suite 150
BISHOP, CA 93514
phone (760) 873-2734
fax (760) 873-8624
e-mail bishop@thainc.com

777 woodside rd. suite a
REDWOOD CITY, CA 94061
phone (650) 366-0216
fax (650) 366-0288
e-mail sr@thainc.com

555 chorro st. suite a
SAN LUIS OBISPO, CA 94903
phone (805) 544-8908
fax (805) 544-8932
e-mail sl@thainc.com

Copyright (C) 2014 by
Triad/Holmes Associates.
All Rights Reserved. This
Document is Intended Only
for Use on the Project
Specified in the Title Block.
Any Reproduction or this
Document, Without the
Expressed Written Consent
of Triad/Holmes is
Prohibited.

PREPARED & SUBMITTED BY:



DATE: 07/8/2014

JUNE LAKE
STREETS REHABILITATION PROJECT
FOREST ROAD

DATE: JULY 8, 2014

SCALE: AS SHOWN

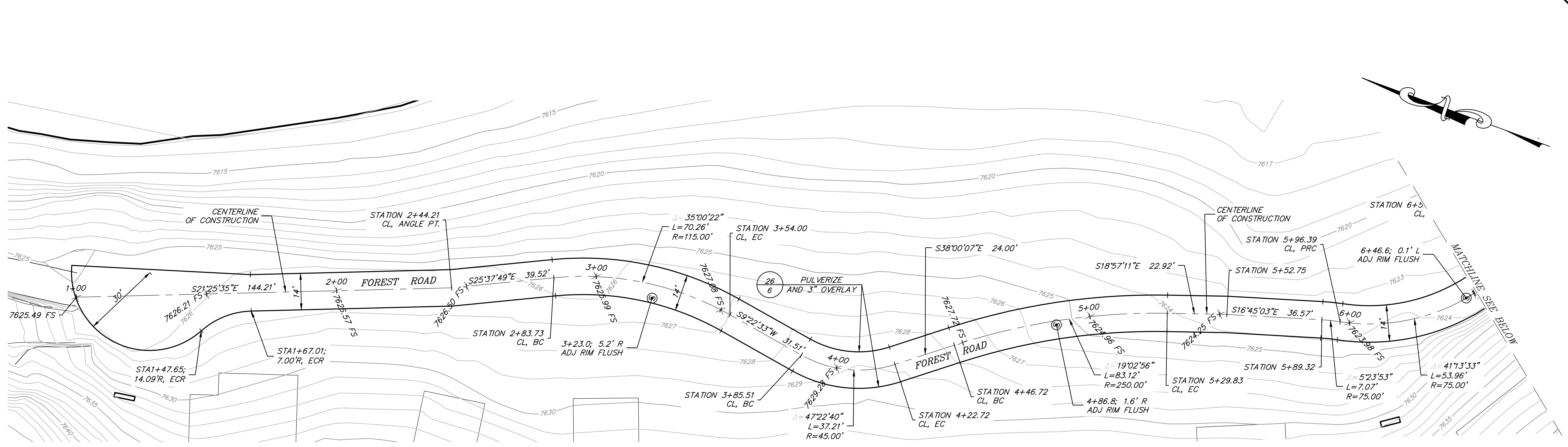
DRAWN: JSP/TT

JOB NO.: 01.4027

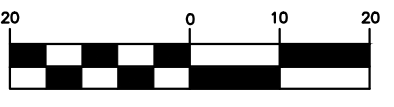
SHEET

22

OF 39 SHEETS



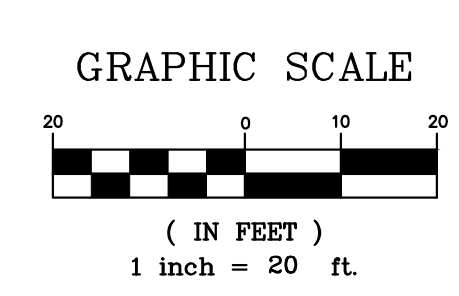
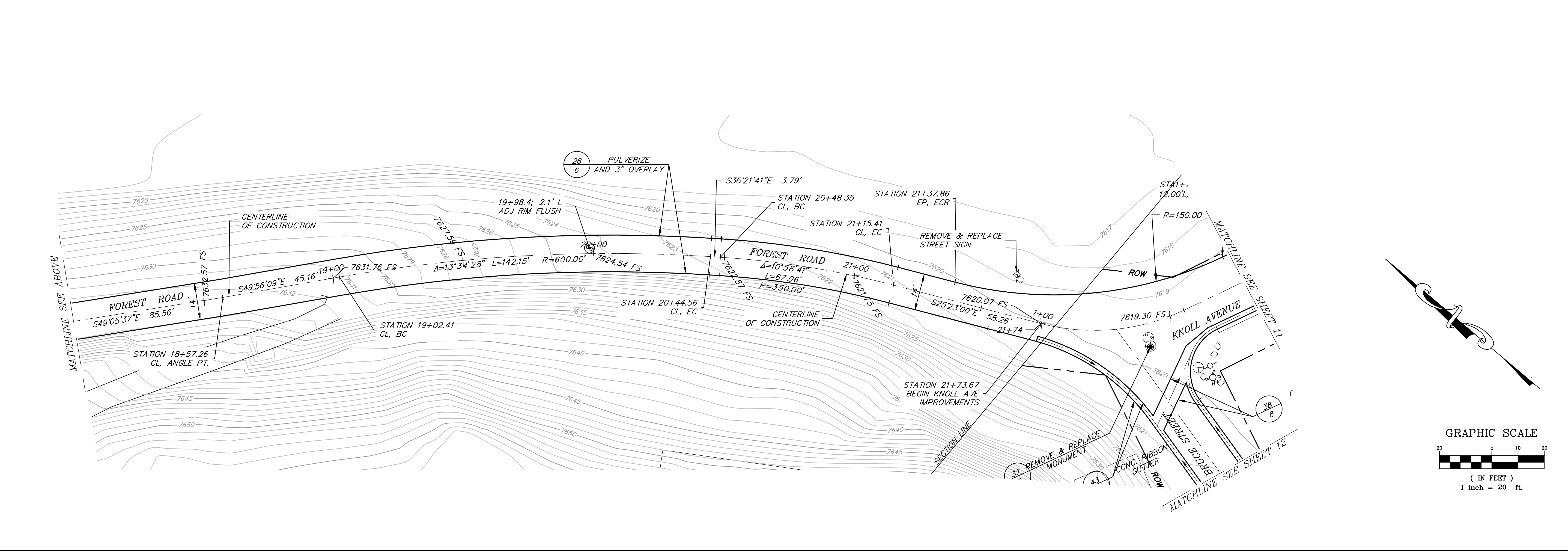
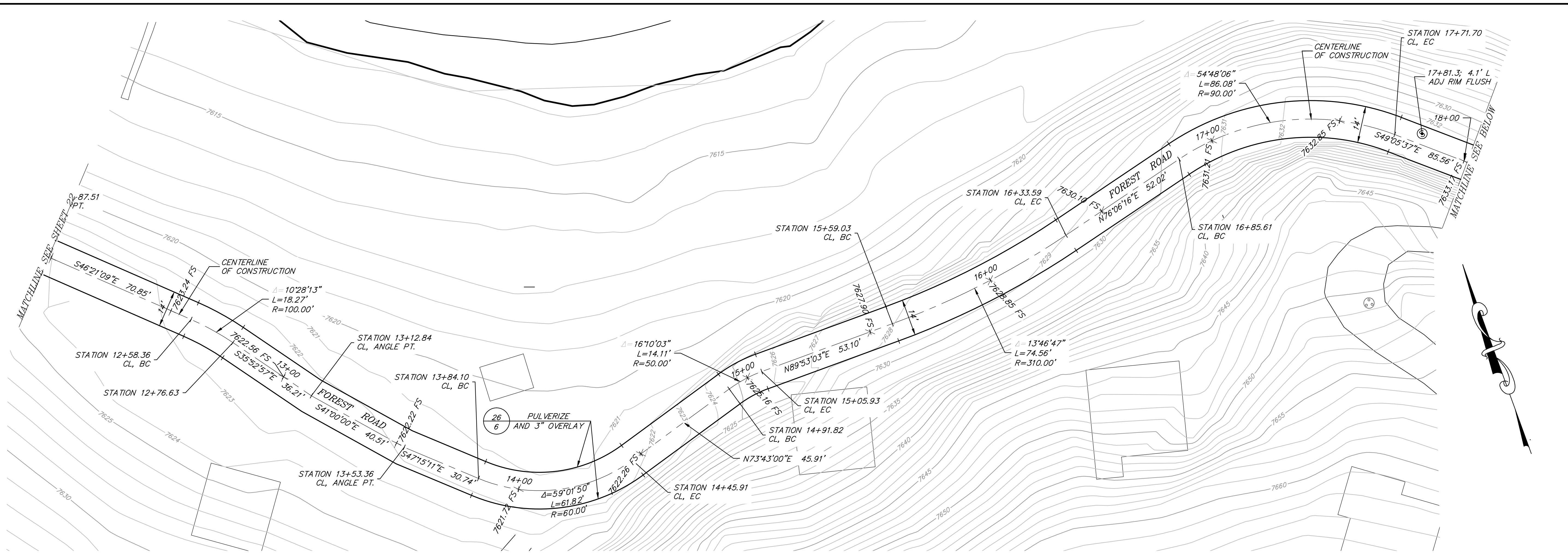
GRAPHIC SCALE



(IN FEET)
1 inch = 20 ft.

K:\01_Mammoth\4027\June Lake Streets CAD\IMPROVEMENT PLANS\4027_KVOLL AVE-FOREST RD.dwg Jul 08, 2014 - 8:12am, jpfeller

K:\01 Mammoth\402\June Lake Streets\CAD\IMPROVEMENT PLANS\4027 KNOLL AVE-FOREST RD.dwg Jul 08, 2014 - 8:12am, p.6/10



t h a
 triad/holmes assoc.
 civil engineering
 land surveying
 MAMMOTH LAKES
 BISHOP
 REDWOOD CITY
 SAN LUIS OBISPO

post office box 1570
 588 sierraville rd. ste. 202
 MAMMOTH LAKES, ca 93546
 phone (760) 934-7588
 fax (760) 934-5619
 e-mail thad@thainc.com

873 north main st. suite 150
 BISHOP, ca 93514
 phone (760) 873-4273
 fax (760) 873-8024
 e-mail bishop@thainc.com

777 woodside rd. suite a
 REDWOOD CITY, ca 94061
 phone (650) 348-5216
 fax (650) 368-0298
 e-mail sf@thainc.com

555 charro st. suite a
 SAN LUIS OBISPO, ca 95408
 phone (805) 544-8908
 fax (805) 544-8932
 e-mail sls@thainc.com

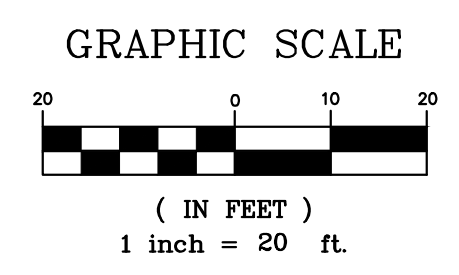
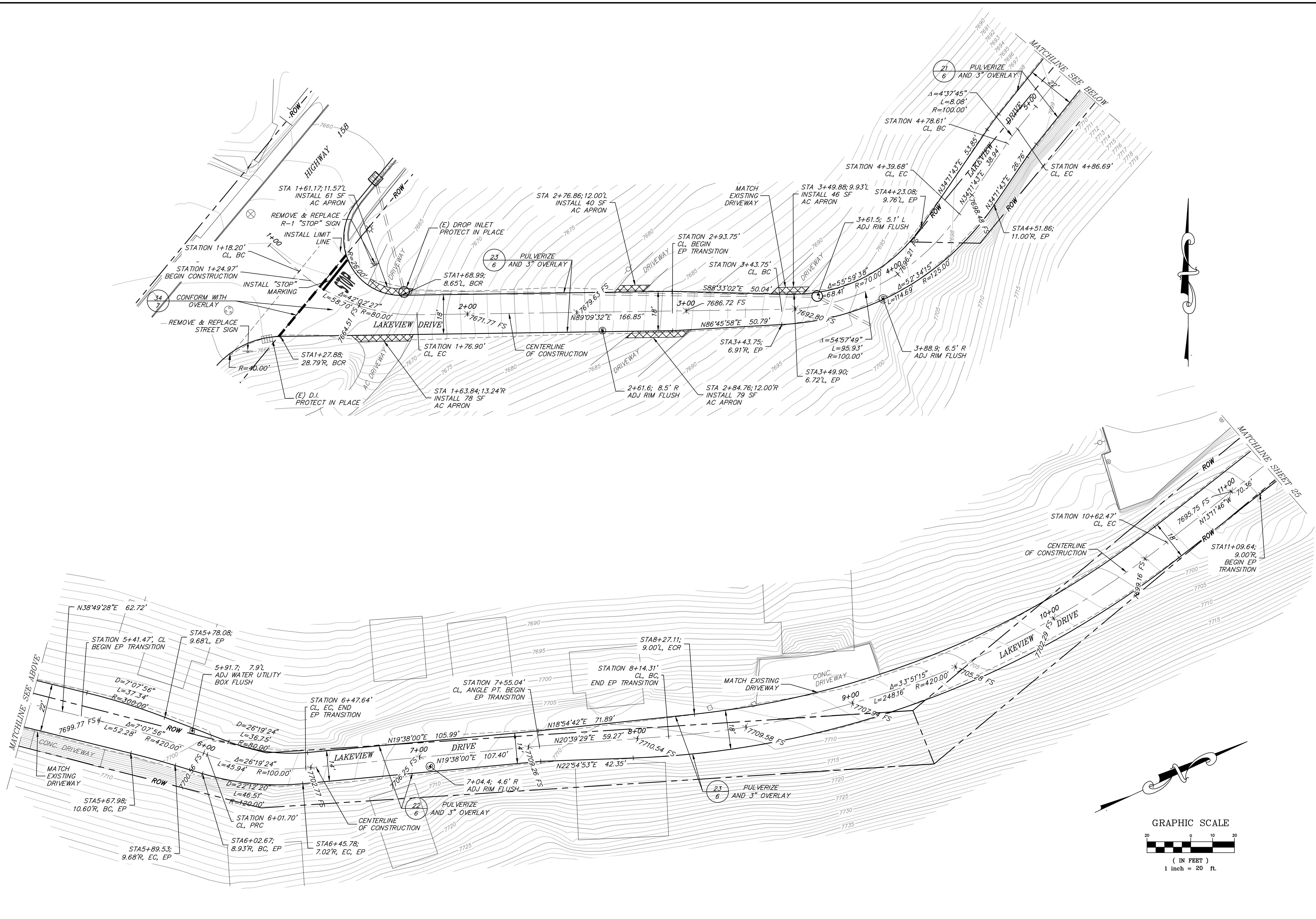
Copyright (C) 2014 by
 Triad/Holmes Associates.
 All Rights Reserved. This
 Document is intended Only
 for use on the Project
 Specified in the Title Block.
 Any Reproduction of this
 Document or Portions of
 this Document, Without the
 Expressed Written Consent
 of Triad/Holmes is
 Prohibited.

PREPARED & SUBMITTED BY:

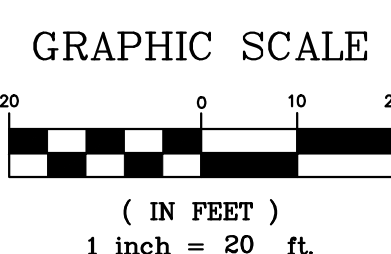
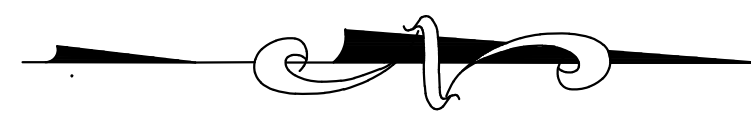
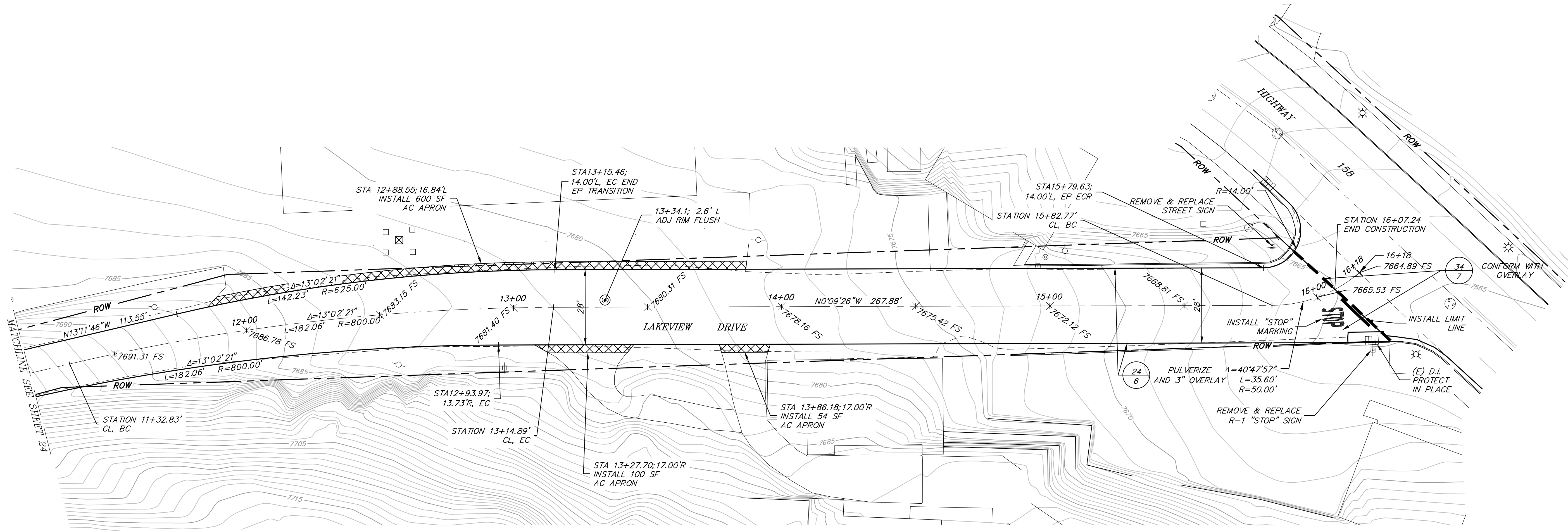
DATE: 07/8/2014

JUNE LAKE
 STREETS REHABILITATION PROJECT
 FOREST ROAD

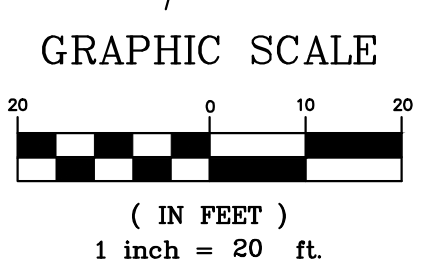
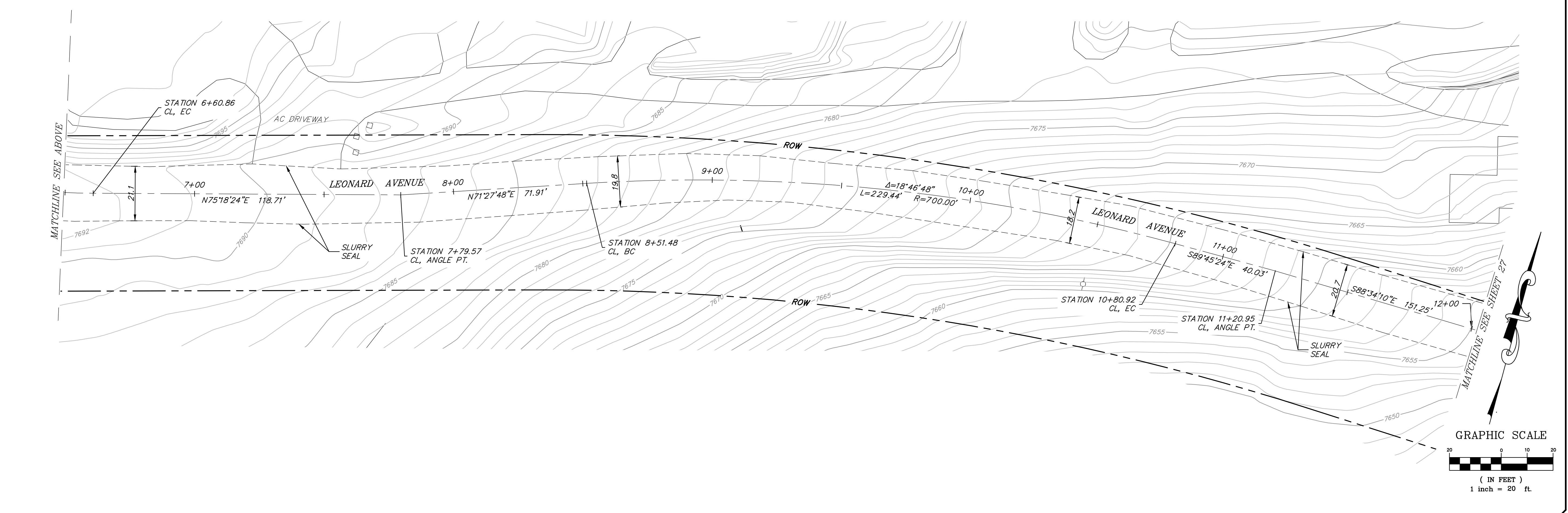
DATE JULY 8, 2014
 SCALE AS SHOWN
 DRAWN JSP/TT
 JOB NO. 01.4027
 SHEET 23
 OF 39 SHEETS



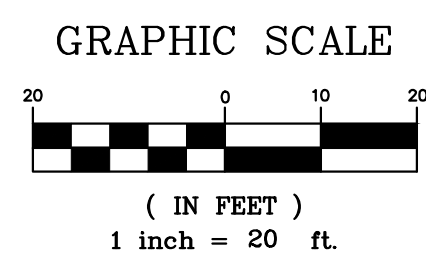
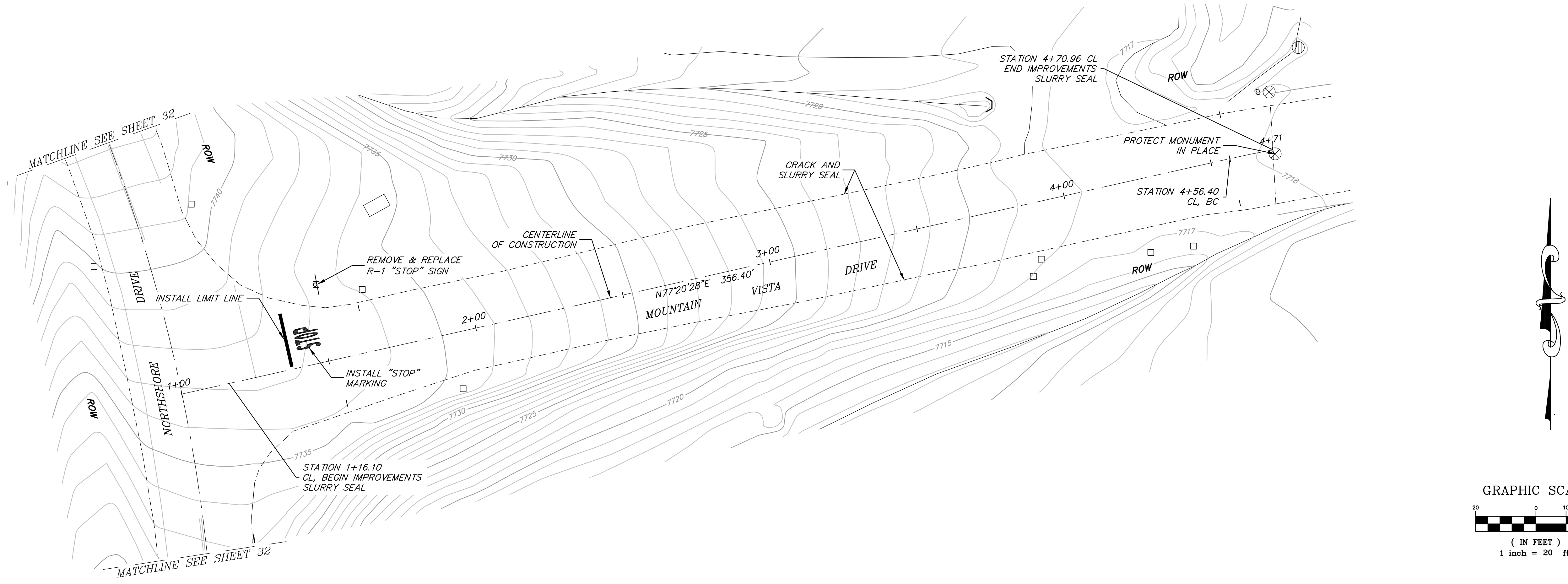
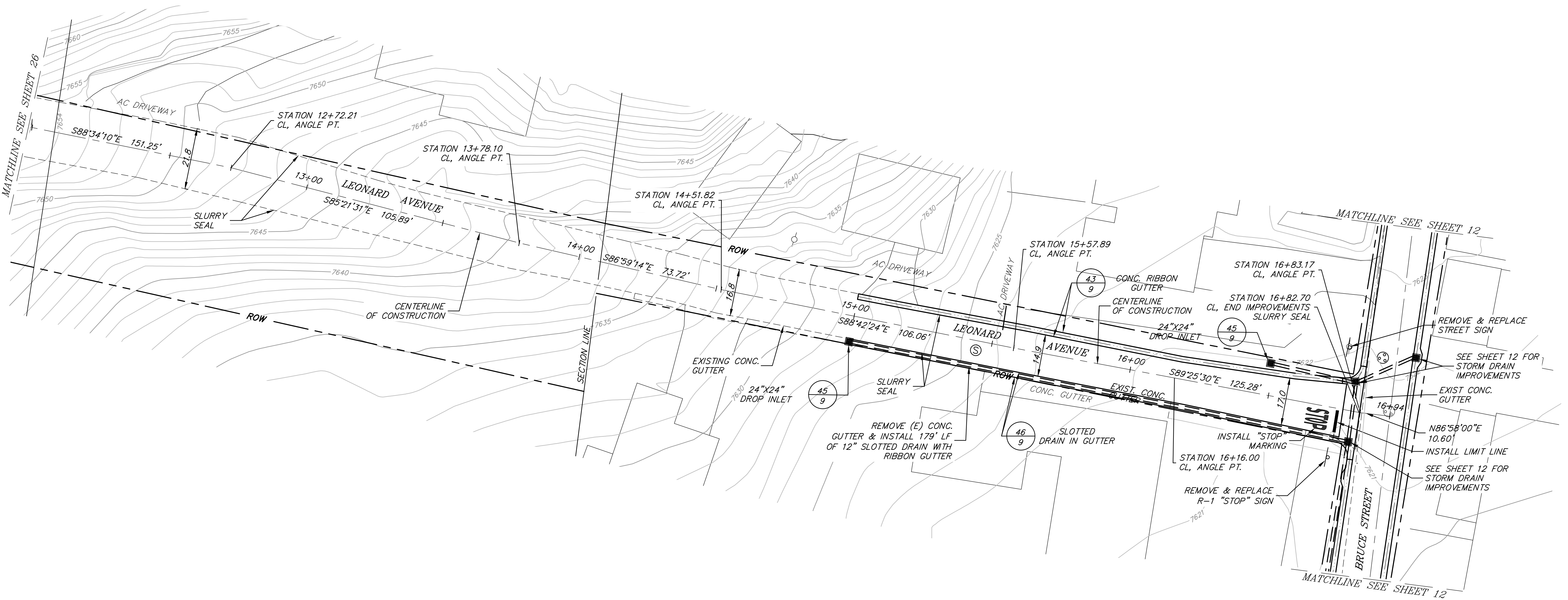
K:\01_Mammouth\4027\June Lake Streets CAD\IMPROVEMENT PLANS\027 LAKEVIEW DR.dwg Jul 08 2014 - 8:39am p/oliver



K:\01_Mammouth\4027\June Lake Streets\IMPROVEMENT PLANS\4027 LAKEVIEW DR.dwg Jul 08, 2014 - 8:40am, jfeiler



K:\01_Mammoch\4027\June Lake Streets\IMPROVEMENT PLANS\027 LEONARD-MTN_VSTA.dwg Jul 08, 2014 - 8:44am, pfeiler

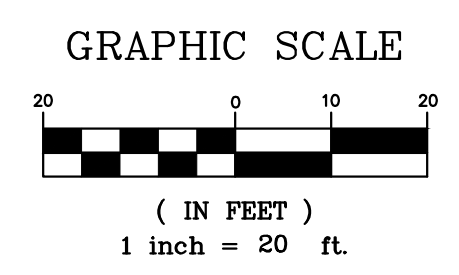
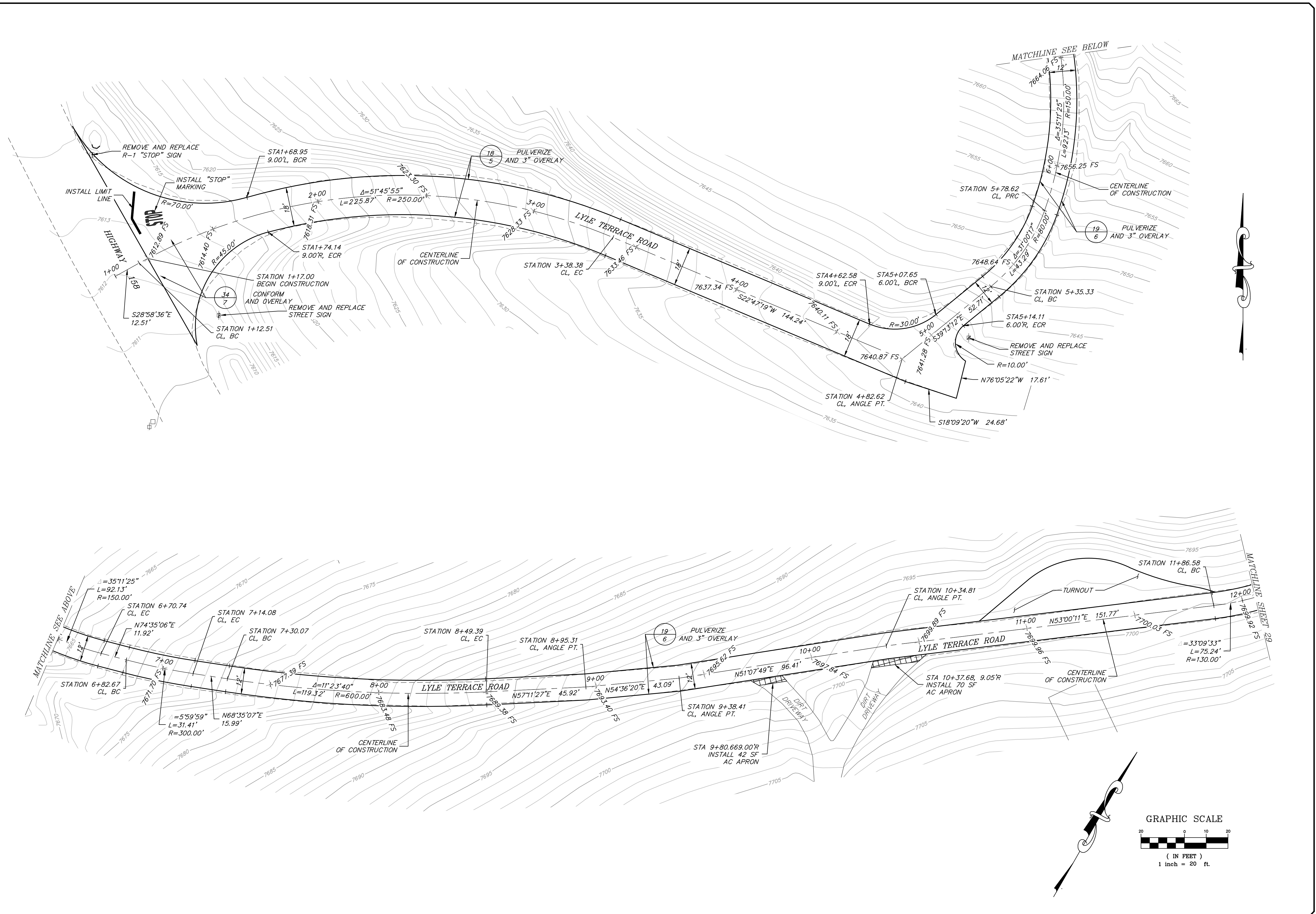


K:\01_Mammoth\4027\June Lake Streets\CAD\IMPROVEMENT PLANS\027 LEONARD-MTN VISTA.dwg Jul 08, 2014 - 8:46am, jfelder

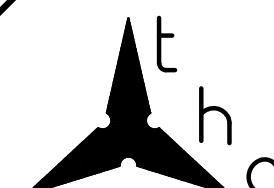
JUNE LAKE

 STREETS REHABILITATION PROJECT

 LYLE TERRACE



K:\01_Mammmoth\4027\June Lake Streets\IMPROVEMENT PLANS\2027 LYLE TERRACE.dwg Jul 08 2014 8:49am jsp/TT



triad/holmes assoc.
civil engineering
land surveying
MAMMOTH LAKES
BISHOP
REDWOOD CITY
SAN LUIS OBISPO

post office box 1570
58 W Mammoth rd, ste 202
MAMMOTH LAKES, ca 93246
phone (760) 934-7548
fax (760) 934-5819
e-mail triad@thinc.com

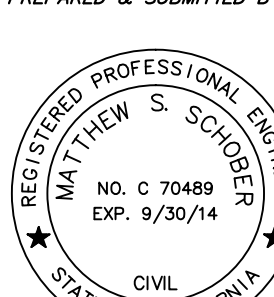
873 north main st. suite 150
BISHOP, ca 93514
phone (760) 873-4273
fax (760) 873-8024
e-mail bishop@thinc.com

777 woodside rd. suite a
REDWOOD CITY, ca 94061
phone (650) 366-0216
fax (650) 368-0298
e-mail af@thinc.com

555 charro st. suite a
SAN LUIS OBISPO, ca 95050
phone (805) 544-8908
fax (805) 544-8932
e-mail sls@thinc.com

Copyright (C) 2014 by
Triad/Holmes Associates.
All Rights Reserved. This
Document is Intended Only
for Use on the Project
Specified in the Title Block.
Any Reproduction of this
Document or Portions of
this Document, Without the
Expressed Written Consent
of Triad/Holmes is
Prohibited.

PREPARED & SUBMITTED BY:



Matthew S. Schoger

DATE: 07/8/2014

JUNE LAKE
STREETS REHABILITATION PROJECT
LYLE TERRACE

DATE JULY 8, 2014

SCALE AS SHOWN

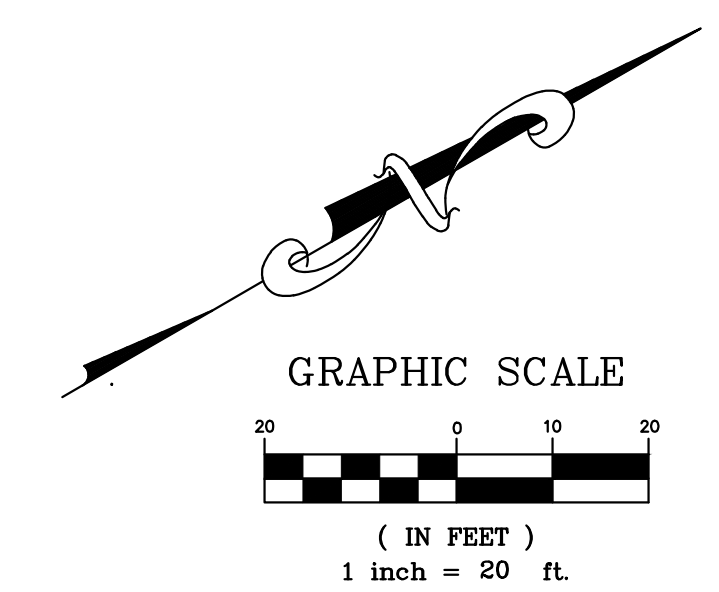
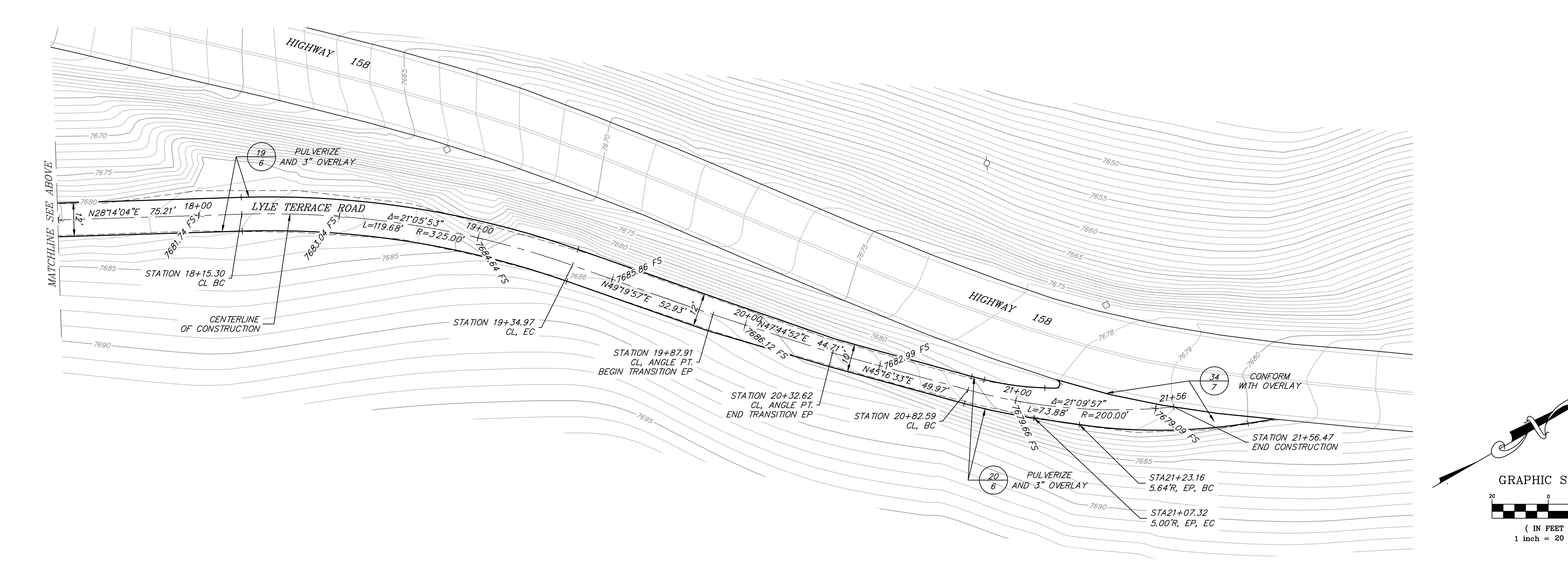
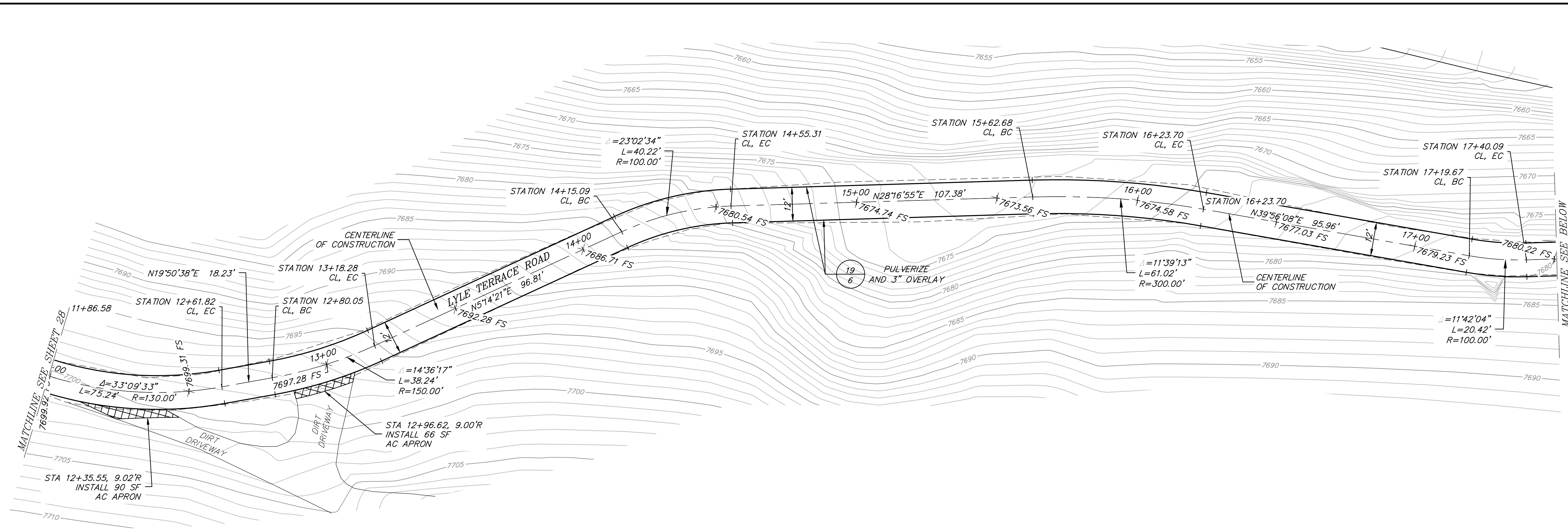
DRAWN JSP/TT

JOB NO. 01.4027

SHEET

29

OF 39 SHEETS



K:\01_Mammouth\4027\June Lake Streets\CAD\IMPROVEMENT PLANS\2027_LYLE TERRACE.dwg Jul 08 2014 - 8:51am jsp/tt