

**Addendum
to the Negative Declaration for the
Mountain Gate Fishing Access Project
SCH #2006102041**

June 10, 2014

Executive Summary

The Mountain Gate Fishing Access Project (MGFAP) would create a parkway that actively encourages interaction with the West Walker River in the form of fishing, hiking, exercising, picnicking, and/or relaxing regardless of age or ability. The two main recreational opportunities provided by the Mountain Gate Fishing Access Project include ADA accessible fishing and an ADA accessible trail to and/or along the West Walker River. Other amenities include picnic and resting areas, day use facilities, therapeutic exercise stations (a “par course”) for senior citizens and disabled persons, accessible restrooms, a side channel restoration, a nature trail, and an interpretive kiosk.

The Initial Study and Negative Declaration for the MGFAP was completed in December of 2006. This addendum is to make minor technical changes, clarifications and non-environmentally significant modifications to the Initial Study and Negative Declaration for MGFAP. The technical change being made to the project will not connect the side channel (the existing riparian area) with the West Walker River and include a constructed wetland. The improvement plans, sheet C1, no longer shows a connection from the West Walker River to the existing riparian area and a constructed wetland.

Addendum Determination

Mono County has determined that an Addendum to Initial Study and Negative Declaration for MGFAP is the appropriate level of environmental review under CEQA. An Addendum is appropriate because the analysis in Table 1 below demonstrates that none of the conditions described in CEQA Guideline Section 15162 have occurred.

CEQA Section 15164 (a) provides that “the lead agency or responsible agency shall prepare an addendum to a previously certified EIR if some changes or additions are necessary but none of the conditions described in Section 15162 calling for preparation of a subsequent EIR have occurred.” None of the conditions described in section 15162 have occurred.

Section 15162 provides for the preparation of a subsequent EIR where:

- (1) Substantial changes are proposed in the project, which will require major revisions of the previous EIR or negative declaration due to the involvement of new significant environmental effects or a substantial increase in the severity of previously identified significant effects;
- (2) Substantial changes occur with respect to the circumstances under which the project is undertaken which will require major revisions of the previous EIR or negative declaration due to the involvement of new significant environmental effects or a substantial increase in the severity of previously identified effects;
- (3) New information of substantial importance, which was not known and could not have been known with the exercise of reasonable diligence at the time the previous EIR was certified as complete or the negative declaration was adopted, shows any of the following:
 - a. The project will have one or more significant effects not discussed in the previous EIR or negative declaration;
 - b. Significant effects previously examined will be substantially more severe than shown in the previous EIR;
 - c. Mitigation measures or alternatives previously found not to be feasible would in fact be feasible, and would substantially reduce one or more significant effects of

the project, but the project proponents decline to adopt the measure or alternative;
or

- d. Mitigation measures or alternatives which are considerably different from those analyzed in the previous EIR would substantially reduce one or more significant effects on the environment but the project proponent declines to adopt the mitigation measure or alternative.

Table 1: Review of findings under CEQA Guidelines Section 15162

Summary of technical changes made to the Mt. Gate Fishing Access Project – Initial Study/Neg Dec	CEQA guidelines section 15162 Analysis
<p>Page 14 of Initial Study/Neg Dec IV. Biological Resources b) states: <i>In addition, the project will include a constructed wetland and a side channel restoration.</i></p> <p>Project has been changed to exclude a constructed wetland and side channel restoration.</p> <ul style="list-style-type: none"> • See Improvement Plans, Mountain Gate Phase 2, Sheet C1. 	<p>The original intent for the constructed wetland and side channel restoration was dependent on a connection to the West Walker River. This direct connection to the river no longer exists and the existing riparian area will not be reconstructed but will remain in its current state. This change will not have an impact to the environment.</p>
<p>Page 15 of Initial Study/Neg Dec VIII. Hydrology and Water Quality c) states: <i>A side channel restoration project is planned for the site....because water will constantly be flowing through.</i></p> <p>Project has been changed to exclude a constructed wetland and side channel restoration.</p> <ul style="list-style-type: none"> • See Improvement Plans, Mountain Gate Phase 2, Sheet C1. 	<p>The original intent for the constructed wetland and side channel restoration was dependent on a connection to the West Walker River. This direct connection to the river no longer exists and the existing riparian area will not be reconstructed but will remain in its current state. This change will not have an impact to the environment.</p>

References

- *Negative Declaration - Mt. Gate Fishing Access Project – December 2006*
- *Mountain Gate Phase 2 – 90% Improvement Plans (dated 06/05/14)*
- *Mountain Gate Fishing Access Park and Channel Restoration Project, Delineation of Waters of the U.S. Including Wetlands - HDR Engineering, Inc., July 2010*

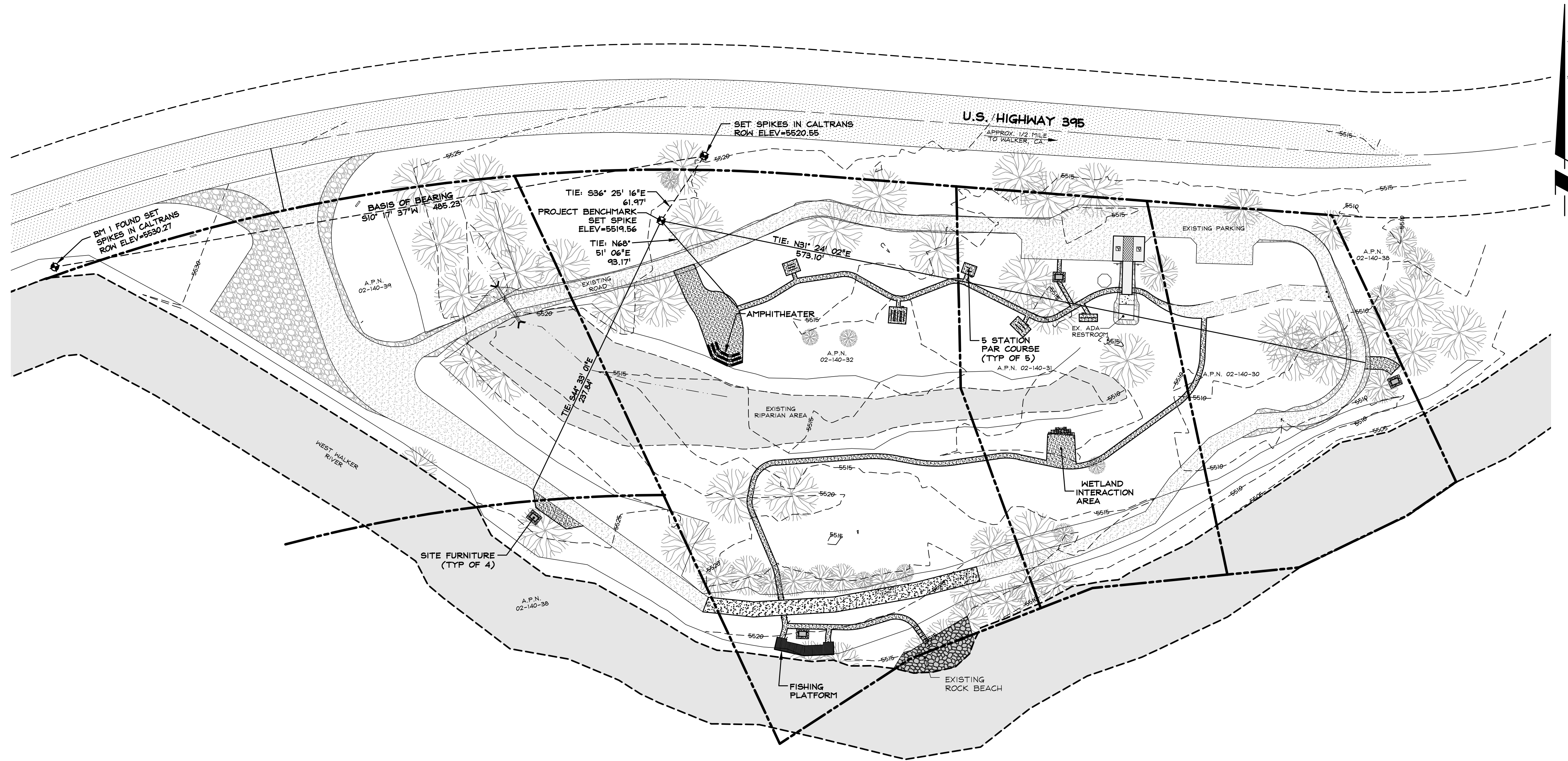
IMPROVEMENT PLANS MOUNTAIN GATE PHASE 2

MONO COUNTY
A.P.N. 02-140-30-31-32-38-39



VICINITY MAP

SCALE: 1" = 1,500'



OVERALL SITE PLAN

SCALE: 1" = 50'

PROJECT SUMMARY

OWNER/APPLICANT: MONO COUNTY DEPT. OF PUBLIC WORKS
P.O. BOX 457 74 N. SCHOOL STREET
BRIDGEPORT, CA 95517

PHONE: (760) 932-5446
FAX: (760) 932-5441

PROJECT ENGINEER: R.O. ANDERSON ENGINEERING, LLC.
1603 EMERALDA AVE, MINDEN, NV 89423
PHONE: (775) 782-2322
FAX: (775) 782-7084

PROJECT ADDRESS: U.S. HIGHWAY 395
WALKER, CALIFORNIA

A.P.N.: 02-140-30-31-32-38-39

CURRENT LAND USE: MUI & RRIO
PROJECT AREA: 15 AC
FLOOD ZONE: AE FLOODWAY AREA PER F.I.R.M. 0605IC0089D DATED FEBRUARY 18, 2011

SHEET INDEX

- C1 COVER SHEET
- C2 LEGEND, ABBREVIATIONS, & NOTES
- C3 EXISTING CONDITIONS, DEMOLITION, & EROSION CONTROL PLAN
- C4 SITE PLAN
- C5 GRADING PLAN
- C6 GRADING PLAN
- C7 DETAILS
- C8 DETAILS
- L1 LANDSCAPE LEGEND, NOTES & DETAILS
- L2 SITE LANDSCAPE PLAN & DETAILS
- L3 IRRIGATION LEGEND, NOTES & DETAILS
- L4 SITE IRRIGATION PLAN

APPROVALS

MONO COUNTY _____ DATE _____

R.O. ANDERSON ENGINEERING, INC. _____ DATE _____

Y:\Client_Files\1642-002\CAD\Engineering\Improvement_Plan\1642-002_CAD.dwg 6/5/2014 9:46:36 PM Harris, A. Miller

NO.	DATE	REVISION BLOCK	BY



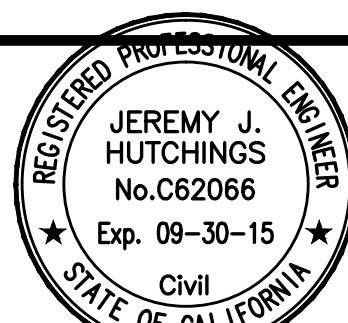
R/O Anderson
www.roanderson.com

NEVADA: 1609 Esmeralda Ave, P.O. Box 2229, Minden, NV 89423
p 775.782.2322 f 775.782.7084

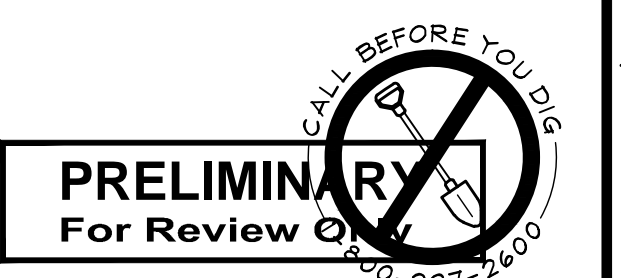
CALIFORNIA: 595 Tahoe Keys Blvd, Suite A-2, South Lake Tahoe, CA 96150
p 530.600.1660 f 775.782.7084

MOUNTAIN GATE PHASE 2
MONO COUNTY

COVER SHEET



DRAWN: MAH	JOB: 1642-002
ENGINEER: JJH	DRAWING: 1642-002C01
SCALE: 1" = 50'	SHEET: C1
DATE: 06/05/14	OF: 9 SHEETS



MOUNTAIN GATE PHASE 2 90% IMPROVEMENT PLANS 06/05/14