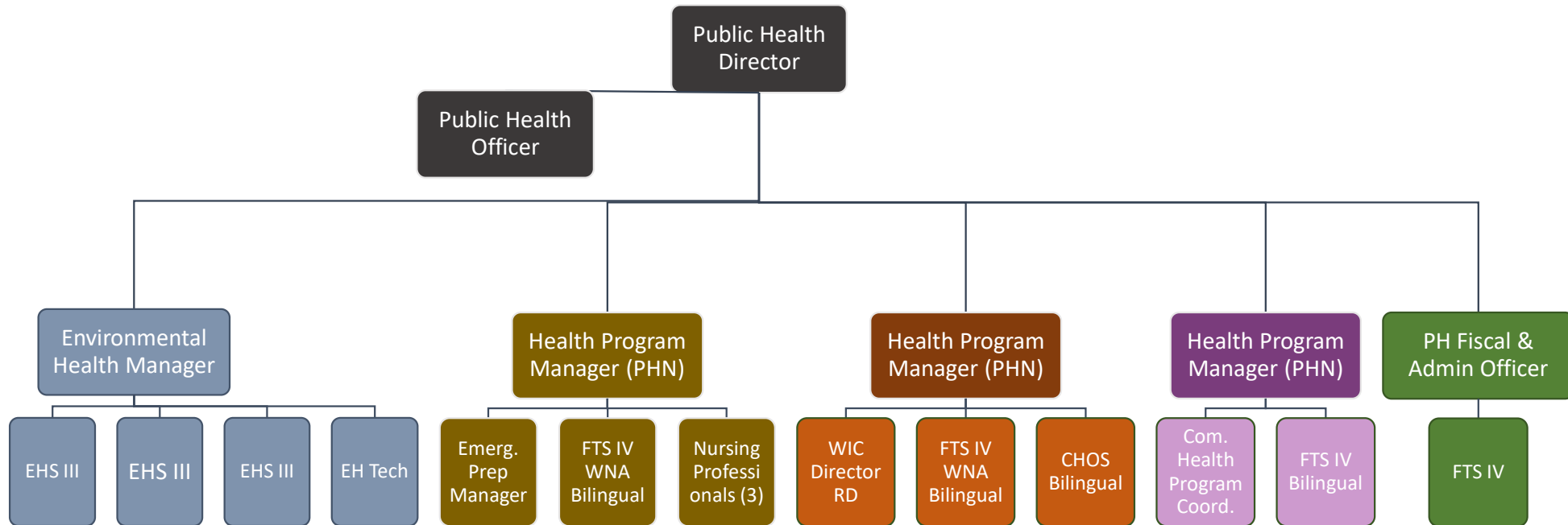




# PUBLIC HEALTH

## Departmental Organizational Chart



DIVISIONS	ENVIRONMENTAL HEALTH	EMERGENCY PREP & DISEASE PREVENTION	INDIVIDUAL & FAMILY SERVICES	COMMUNITY WELLNESS	FINANCE
-----------	----------------------	-------------------------------------	------------------------------	--------------------	---------

# Public Health

## 10 Essential Public Health Services

		Mandated?	
<b>1</b>	<b>Monitor Health</b>	Conduct community health needs assessments	Y
		Determine health service needs and gaps in care	Y
		Identify social and environmental threats to the health of the community	Y
		Identify community assets and resources	Y

		Mandated?	
<b>2</b>	<b>Diagnose &amp; Investigate</b>	Provide access to Public Health Labs	Y
		<b>Infectious disease surveillance, investigation, and response to outbreaks</b>	Y
		Plan for and respond to public health emergencies	Y
		Investigate foodborne outbreaks	Y

<b>3</b>	<b>Inform, Educate, Empower</b>	Provide health promotion activities including flu clinics and smoking cessation support.	Y
		Collaborate on health education efforts with schools and local agencies	Y
		Send MonoGrams to inform the community about seasonal and ongoing public health issues	Y
		Provide accessible, bilingual, health information and resources via multiple media outlets	Y

<b>4</b>	<b>Mobilize Community Partnerships</b>	Build coalitions to bring together resources from the whole community	Y
		Health improvement planning efforts, programs, and projects	Y
		Convene partners to develop a community health improvement plan	Y
		Develop MOUs with other organizations to improve continuity of care	Y

<b>5</b>	<b>Develop Policies</b>	Develop and track measurable objectives	Y
		Foster leadership at all levels	Y
		Develop policies and ordinances to improve public health	Y
		Advocate for legislation that supports public health and funding	Y

<b>6</b>	<b>Enforce Laws</b>	Enforce sanitation codes	Y
		Protect drinking water supplies	Y
		Conduct timely inspections and response to complaints	Y
		Follow up on hazardous environmental exposures	Y

<b>7</b>	<b>Link to Services</b>	Provide outreach and education for special populations	Y
		Provide culturally appropriate communication and materials	Y
		Refer and provide warm-hand offs to health & human services	Y
		Distribute mass quantities of antibiotics or vaccines in the event of an outbreak or bioterrorism related attack	Y

<b>8</b>	<b>Assure Competent Workforce</b>	Provide education, training, and evaluation	Y
		Provide monetary support and efficient procedures for license renewal	Y
		Provide public health nursing internships and training programs	Y
		Test emergency response plan during a mock event to evaluate performance.	Y

<b>9</b>	<b>Evaluate</b>	Evaluate effectiveness of public health programs and services	Y
		Allocate resources and reshape programs or organizational structure	Y
		Monitor trends in disease rates to assess effectiveness of disease prevention activities	Y
		Monitor trends in risk behaviors to assess effectiveness of health promotion activities	Y

<b>Research</b>	Utilize best practices to guide work	Y
	Link with institutions of higher learning	Y
	Monitor rapidly changing disease prevention and health promotion research	Y
	Revise practices in order to remain current with recommended practices resulting from evidence based work	Y

# Public Health Department

## DEPARTMENT 847-860-862

### DEPARTMENTAL OVERVIEW

Environmental and Public Health promote and protect the health of people and the communities where they live, learn, work and play. Through an upstream approach, Mono County Health Department strives to prevent people from getting sick or injured and promotes wellness by encouraging healthy behaviors. The 10 Essential Public Health Functions serve as a framework of how local, State and Federal mandates and core functions are upheld and implemented. Our mission is to promote and protect a Mono County culture of health and safety in the community and environment through outreach, education, and prevention. Our core values include wellness, integrity, respect, caring, excellence in quality and service, personal and professional growth, collaboration, and flexibility.

### PROGRAMS AND SERVICES

#### PUBLIC HEALTH (Fund 130)

**Children's Medical Services (CMS):** provides a comprehensive system of health care for children through preventive screening, diagnostic, treatment, rehabilitation, and follow-up services for targeted populations.

**Communicable Disease Control:** works to promptly identify, prevent and control infectious diseases that pose a threat to public health, including infectious diseases, vaccine-preventable agents, bacterial toxins, and pandemics.

**HIV/AIDS/STD Programs:** provides access to comprehensive prevention, diagnosis and treatment services for sexually transmitted diseases and HIV.

**Immunization Program:** protects the population against vaccine-preventable diseases.

**Maternal, Child, & Adolescent Health (MCAH):** promotes healthy living, reproductive health, family planning, and access to prenatal care for mothers and their families.

**Woman, Infant, and Child (WIC) Program:** helps income eligible families by providing nutrition education, breastfeeding support, vouchers for healthy foods, and referrals to healthcare and other community services.

#### HEALTH EDUCATION (Fund 131)

**Tobacco Education Program:** Partners with agencies, organizations, communities, and individuals to collaboratively improve health for Mono County residents and visitors through health promotion outreach to high risk populations, training and technical assistance, tobacco cessation, youth health promotion and risk prevention, health promotion through media, public health policy development and advocacy, and evaluation of outcomes.

#### BIO-TERRORISM (Fund 133)

**Public Health Emergency Preparedness Program:** Ensures a coordinated and effective response for the medical and health planning efforts during an emergency or disaster that impacts the health of our

community. Works with local stakeholders, including healthcare providers and facilities, community-based organizations, law enforcement, fire personnel, emergency medical services, schools, volunteers, town and county governments, and many other entities.

### **PUBLIC HEALTH (FUND 137)**

**Environmental Health:** promotes public health and facilitates disease prevention through oversight and guidance in the areas of water quality control, food safety, solid and liquid waste management, air quality control, hazardous materials and waste management, substandard housing mitigation, recreational swimming facilities and vector-borne disease surveillance.

### **DESCRIBE WHAT IS NOT INCLUDED IN THIS BUDGET**

Use this section of the narrative to describe what items were not included in your budget at this time.

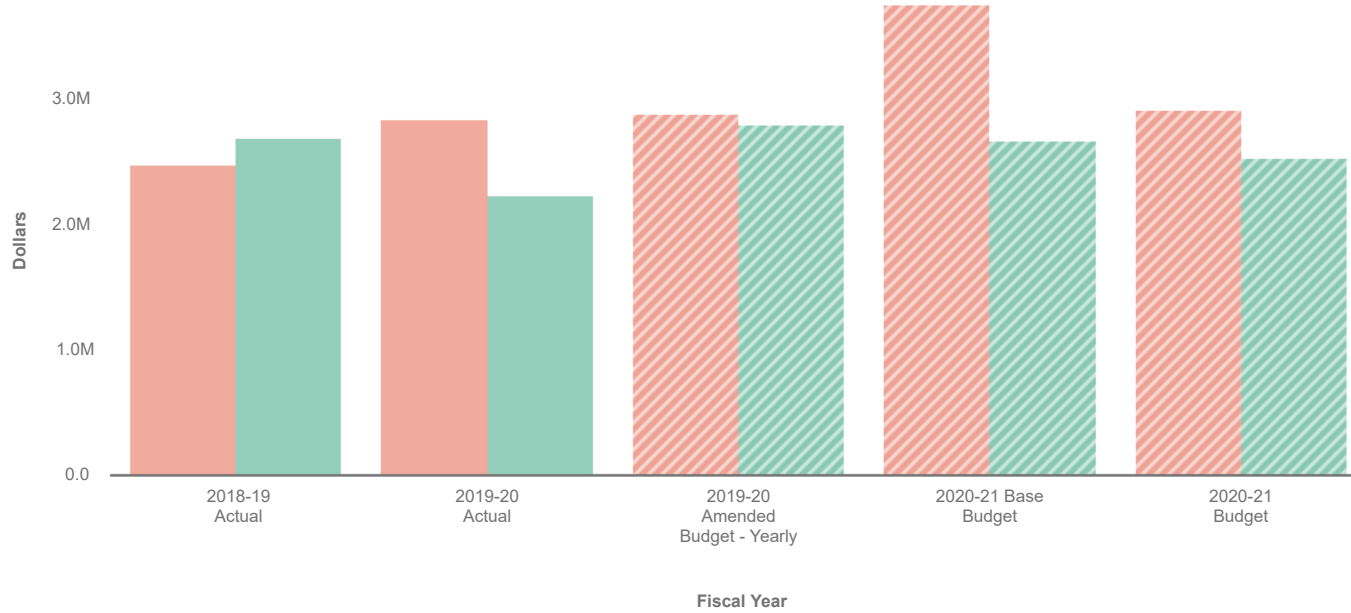
# 1. Public Health 130-41-860



## Visualization

Sort **Large to Small**

- Expenses
- Revenues



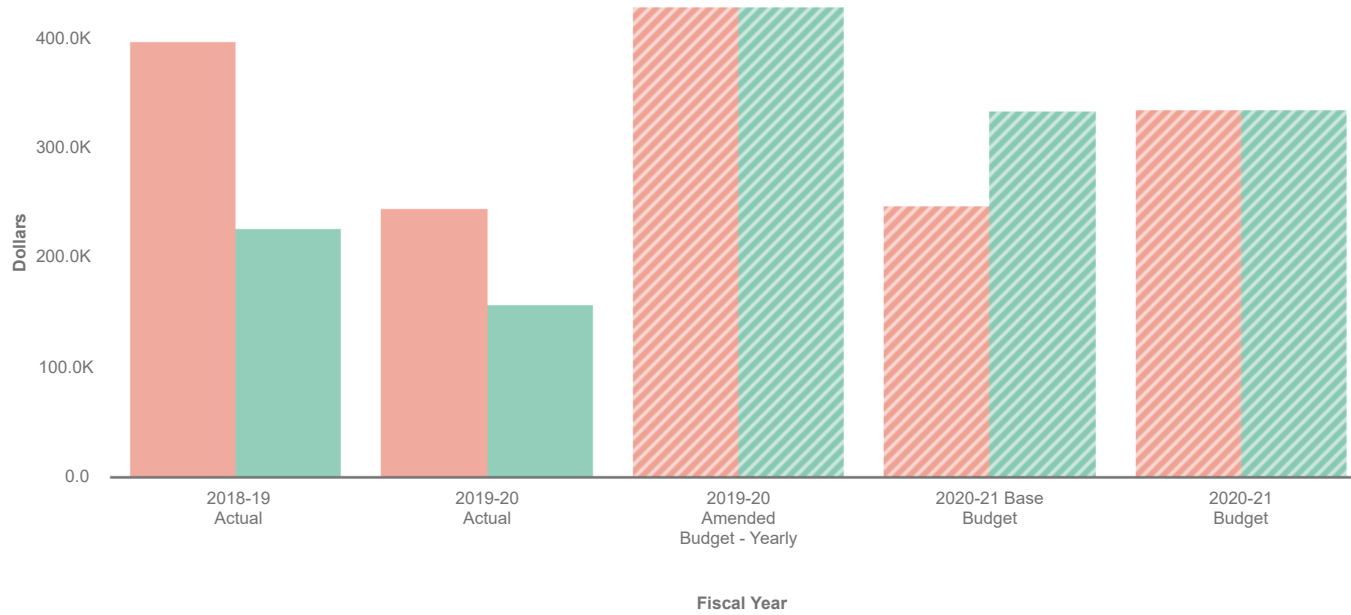
Collapse All	2018-19 Actual	2019-20 Actual	2019-20 Amended Budget - Yearly	2020-21 Base Budget	2020-21 Budget
<b>▼ Revenues</b>	\$ 2,685,491	\$ 2,229,504	\$ 2,797,390	\$ 2,669,428	\$ 2,531,193
▶ Intergovernmental	2,148,802	1,783,192	2,246,552	2,096,273	2,032,089
▶ Licenses, Permits & Franchises	286,291	298,462	278,490	277,691	0
▶ Charges for Services	208,019	128,875	240,498	263,614	255,592
▶ Miscellaneous Revenues	7,734	1,016	0	0	208,342
▶ Transfers In	21,599	5,683	24,350	24,350	27,670
▶ Interest & Rents	12,542	11,126	7,000	7,000	7,000
▶ Fines, Forfeitures & Penalties	503	1,152	500	500	500
<b>▼ Expenses</b>	2,475,304	2,841,534	2,877,854	3,741,052	2,907,518
▶ Salaries & Benefits	1,756,307	1,951,053	1,858,234	2,483,814	1,341,223
▶ Services and Supplies	718,997	805,483	934,622	1,189,468	772,681
▶ Transfers Out	0	84,998	84,998	67,770	793,614
<b>Revenues Less Expenses</b>	\$ 210,187	\$ -612,030	\$ -80,464	\$ -1,071,624	\$ -376,325

Data filtered by Types, PUBLIC HEALTH, HEALTH&SANITATION-HEALTH, PUBLIC HEALTH, No Project and exported on August 20, 2020. Created with OpenGov

## 2. Public Health Education 131-41-847



### Visualization



Sort Large to Small

- Expenses
- Revenues

Collapse All	2018-19 Actual	2019-20 Actual	2019-20 Amended Budget - Yearly	2020-21 Base Budget	2020-21 Budget
▼ Revenues	\$ 226,773	\$ 158,288	\$ 427,606	\$ 334,561	\$ 335,201
▶ Intergovernmental	226,812	119,855	387,367	311,550	0
▶ Transfers In	0	40,239	40,239	23,011	335,201
▶ Interest & Rents	-39	-1,806	0	0	0
▼ Expenses	396,738	245,076	427,606	247,801	335,201
▶ Salaries & Benefits	224,442	128,146	232,993	157,767	238,773
▶ Services and Supplies	172,296	116,930	194,613	90,034	96,428
<b>Revenues Less Expenses</b>	<b>\$ -169,965</b>	<b>\$ -86,788</b>	<b>\$ 0</b>	<b>\$ 86,760</b>	<b>\$ 0</b>

Data filtered by Types, PUBLIC HEALTH EDUCATION (TOBACCO), HEALTH&SANITATION-HEALTH, HEALTH EDUCATION, No Project and exported on August 20, 2020. Created with OpenGov

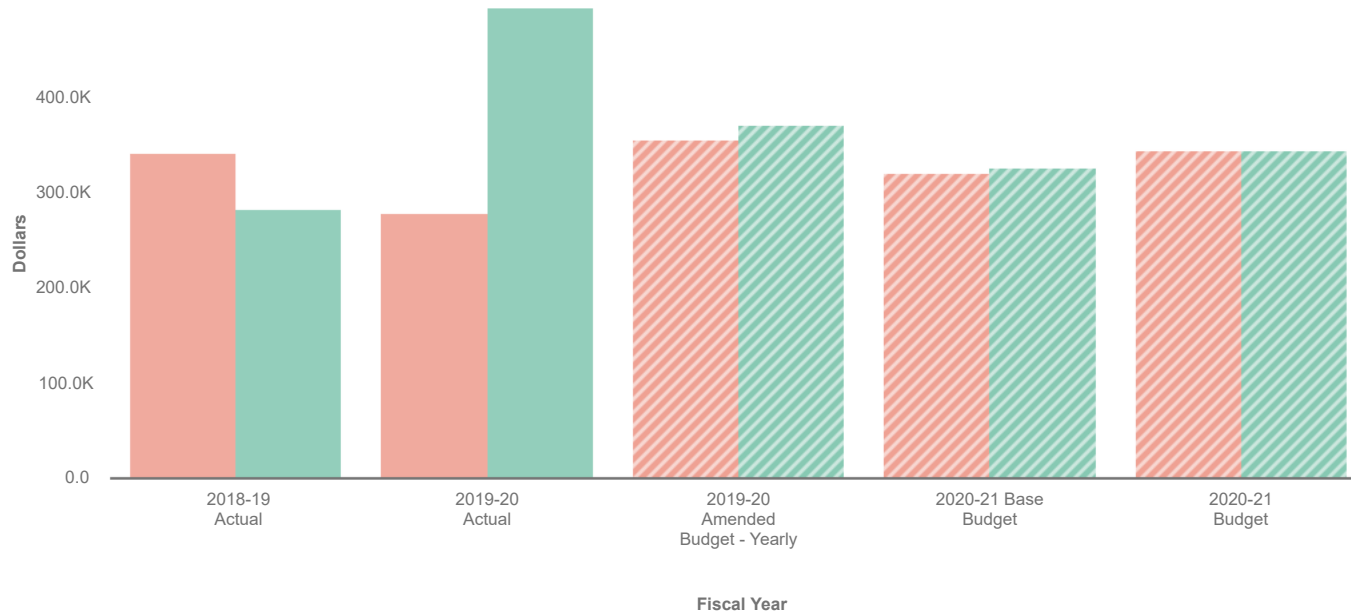
### 3. Bio-Terrorism 133-41-860



Visualization

Sort Large to Small

- Revenues
- Expenses



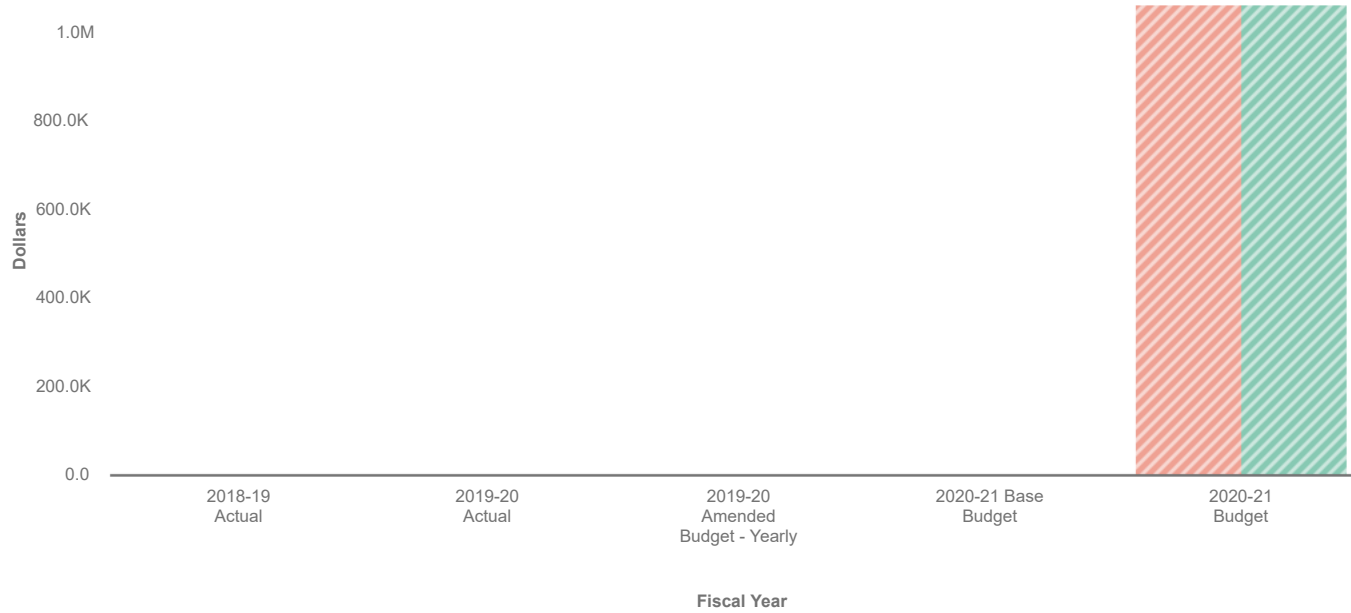
Collapse All	2018-19 Actual	2019-20 Actual	2019-20 Amended Budget - Yearly	2020-21 Base Budget	2020-21 Budget
<b>▼ Revenues</b>	\$ 283,969	\$ 493,645	\$ 371,640	\$ 326,189	\$ 345,667
▶ Intergovernmental	220,249	451,439	326,881	281,430	298,921
▶ Transfers In	0	44,759	44,759	44,759	46,746
▶ Miscellaneous Revenues	66,488	0	0	0	0
▶ Interest & Rents	-2,768	-2,553	0	0	0
<b>▼ Expenses</b>	342,220	279,208	355,673	321,004	345,667
▶ Salaries & Benefits	245,999	200,864	273,108	251,773	248,316
▶ Services and Supplies	96,221	78,344	82,565	69,231	97,351
<b>Revenues Less Expenses</b>	\$ -58,251	\$ 214,437	\$ 15,967	\$ 5,185	\$ 0

Data filtered by Types, BIO-TERRORISM - PUBLIC HEALTH, HEALTH&SANITATION-HEALTH, PUBLIC HEALTH, No Project and exported on August 20, 2020. Created with OpenGov

# 4. Environmental Health 137-41-862



## Visualization



Sort **Large to Small**

- Expenses
- Revenues

Collapse All	2018-19 Actual	2019-20 Actual	2019-20 Amended Budget - Yearly	2020-21 Base Budget	2020-21 Budget
<b>▼ Revenues</b>	\$ 0	\$ 0	\$ 0	\$ 0	\$ 1,059,555
▶ <b>Transfers In</b>	0	0	0	0	716,752
▶ <b>Licenses, Permits &amp; Franchises</b>	0	0	0	0	277,003
▶ <b>Charges for Services</b>	0	0	0	0	49,300
▶ <b>Intergovernmental</b>	0	0	0	0	16,500
<b>▼ Expenses</b>	0	0	0	0	1,059,555
▶ <b>Salaries &amp; Benefits</b>	0	0	0	0	658,430
▶ <b>Services and Supplies</b>	0	0	0	0	401,125
<b>Revenues Less Expenses</b>	\$ 0	\$ 0	\$ 0	\$ 0	\$ 0

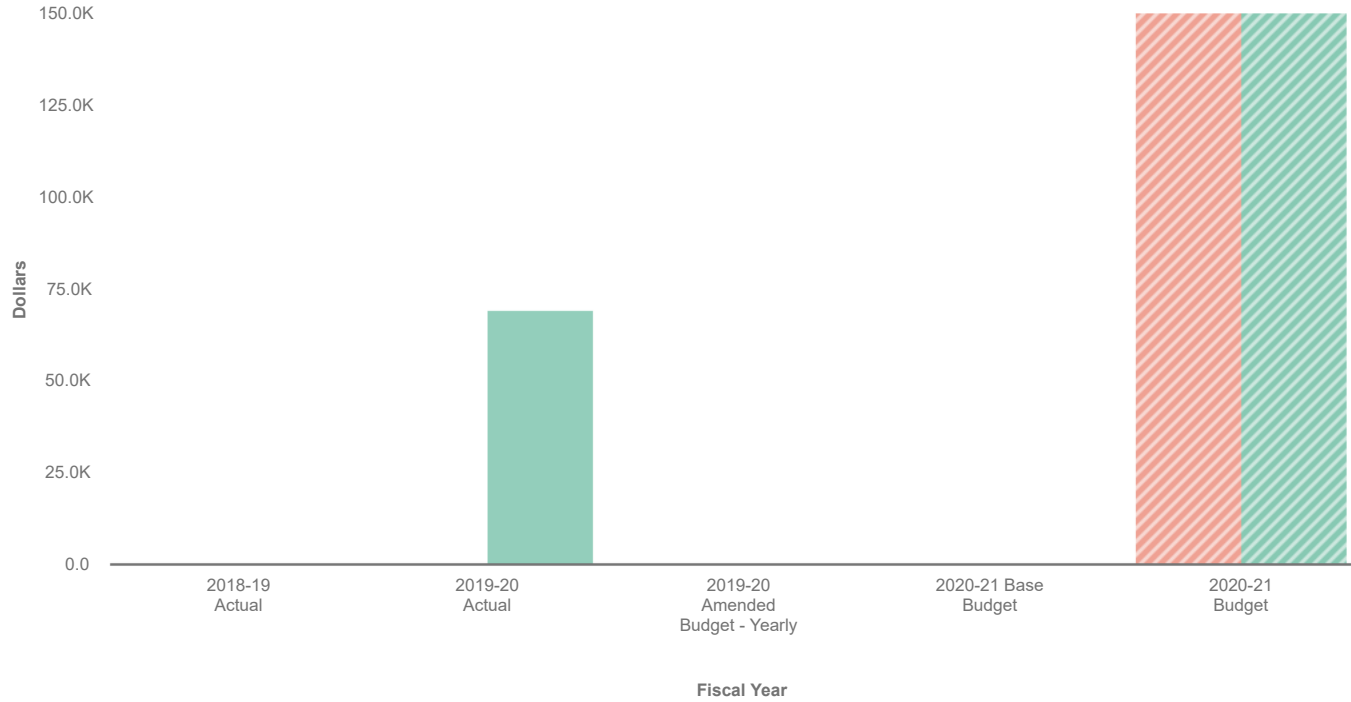
Data filtered by Types, Environmental Health, HEALTH&SANITATION-HEALTH, Environmental Health, No Project and exported on August 20, 2020. Created with OpenGov



# 5. Prop 99 Public Health Education 135-41-847



## Visualization



Sort **Large to Small**

- Revenues
- Expenses

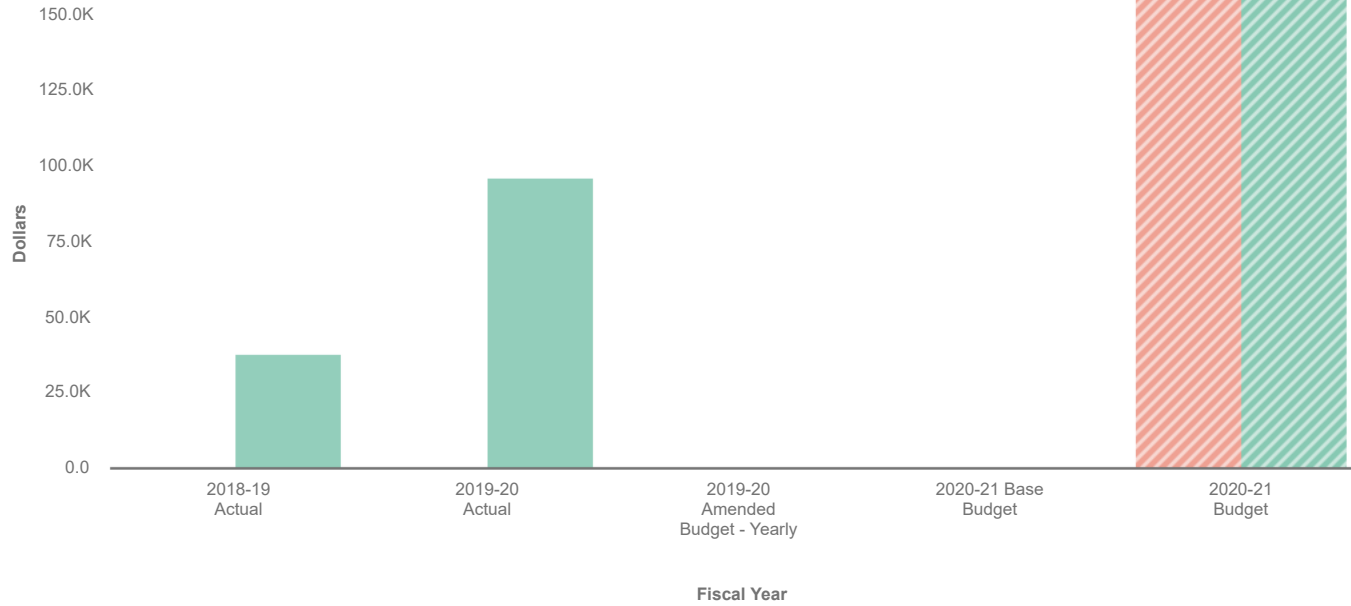
Collapse All	2018-19 Actual	2019-20 Actual	2019-20 Amended Budget - Yearly	2020-21 Base Budget	2020-21 Budget
<b>▼ Revenues</b>	\$ 0	\$ 69,429	\$ 0	\$ 0	\$ 150,000
▶ Intergovernmental	0	68,248	0	0	150,000
▶ Interest & Rents	0	1,181	0	0	0
<b>▼ Expenses</b>	0	0	0	0	150,000
▶ Transfers Out	0	0	0	0	150,000
<b>Revenues Less Expenses</b>	\$ 0	\$ 69,429	\$ 0	\$ 0	\$ 0

Data filtered by Types, Public Health CTCP Prop 99, HEALTH&SANITATION-HEALTH, HEALTH EDUCATION, No Project and exported on August 24, 2020. Created with OpenGov

## 6. Prop 56 Health Education 136-41-847



### Visualization



Sort **Large to Small**

- Revenues
- Expenses

Collapse All	2018-19 Actual	2019-20 Actual	2019-20 Amended Budget - Yearly	2020-21 Base Budget	2020-21 Budget
<b>▼ Revenues</b>	\$ 38,103	\$ 96,243	\$ 0	\$ 0	\$ 155,085
▶ Intergovernmental	38,103	95,445	0	0	155,085
▶ Interest & Rents	0	798	0	0	0
<b>▼ Expenses</b>	0	0	0	0	155,085
▶ Transfers Out	0	0	0	0	155,085
<b>Revenues Less Expenses</b>	\$ 38,103	\$ 96,243	\$ 0	\$ 0	\$ 0

Data filtered by Types, Public Health CTCP Prop 56, HEALTH&SANITATION-HEALTH, HEALTH EDUCATION, No Project and exported on August 20, 2020. Created with OpenGov