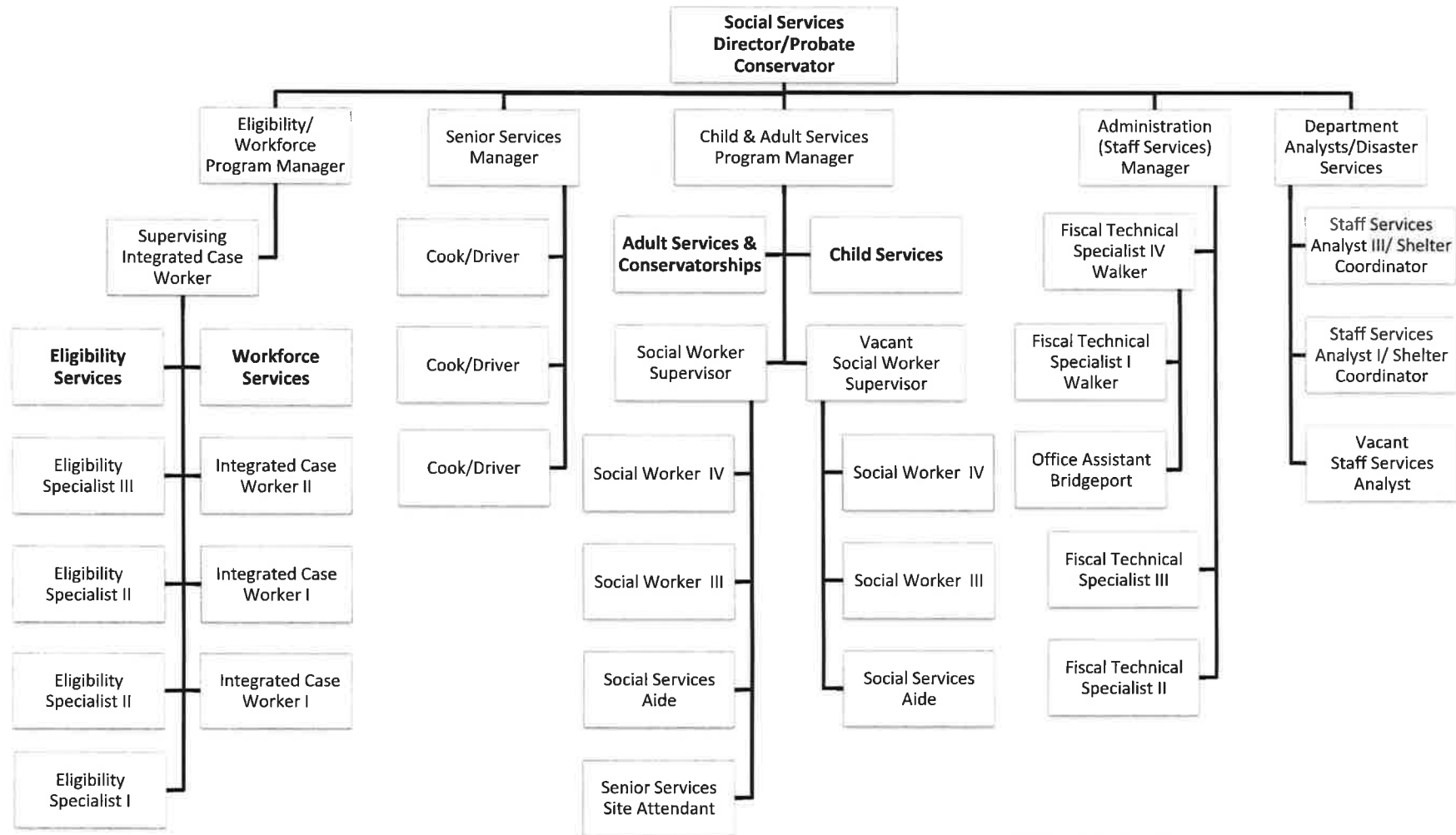


# Mono County Social Services



Current Bilingual Staff = 11

# SOCIAL SERVICES

## Core Services

		Mandated?				Mandated?	
<b>1</b>	<b>CHILD WELFARE SERVICES</b>	Child Protective Services (CPS) - emergency response, investigation	Y	<b>2</b>	<b>ADULT SERVICES</b>	Adult Protective Services (APS) - emergency response, investigation	Y
		Resource Family Approval; Family Reunification; Adoptions	Y			Information and Referral, Case Management	Y
		Case Management; WRAPAround Program for at-risk children/families	Y			Probate Conservator Referrals	Y
		Child Abuse Prevention program administration (CAPIT; CBCAP; PSSF); County Children's Trust Fund	Y			Cross report allegations & coordination	Y
<b>3</b>	<b>IN-HOME SUPPORTIVE SERVICES (IHSS)</b>	Social Worker Assessments and Reassessments	Y	<b>4</b>	<b>PROBATE CONSERVATORSHIPS</b>	Conservatorship referrals and investigations	N
		Quality Assurance	Y			Inventory & Appraisal; Placement; On-going Case Management	N
		Case Management, Information and Payrolling System (CMIPS)	Y			Estate administration services; Representative Payee	N
		Non-profit consortium/Provider relations	Y			Training and Certification by California PA   PG   PC Association	N
<b>5</b>	<b>HEALTH COVERAGE</b>	Medi-Cal Eligibility & Enrollment	Y	<b>6</b>	<b>FINANCIAL ASSISTANCE AND CASE MANAGEMENT</b>	CalWorks Eligibility & Case Management	Y
		Covered California Enrollment	Y			General Assistance/General Relief	Y
		County Medical Services Program	Y			Emergency Assistance	Y
		Managed Care transition support	Y			Homelessness Prevention Programs: HDAP, HSP, HA	N
<b>7</b>	<b>FOOD ASSISTANCE</b>	CalFresh Eligibility & Enrollment	Y	<b>8</b>	<b>WORKFORCE SERVICES</b>	Welfare to Work	Y
		Food Pantry operations	Y			Workforce Innovation and Opportunity Act (WIOA) Program: On-the-Job-Training	N
		CalFresh Expansion to SSI	Y			Employment Services; Resource Room	Y
		Fraud monitoring	Y			Expanded Subsidized Employment	N
<b>9</b>	<b>SENIOR SERVICES</b>	Antelope Valley Senior Center operations; Tri-Valley operations	N	<b>10</b>	<b>DISASTER SERVICES</b>	Countywide Emergency Shelter Operations & Disaster Response	Y
		Nutrition Programs (congregate and home-delivered meals)	N			Red Cross Coordination and Disaster Action Team (DAT)	Y
		Assisted Transportation	N			Recruitment, training & implementation - residents & staff	Y
		Senior activities; Information & Assistance; <i>Healthy Ideas</i> depression prevention program	N			Inter-agency coordination & planning	Y

# SOCIAL SERVICES

## Core Services

11	ADMINISTRATION AND SUPPORT	Policy direction; leadership activities in Ca Welfare Director's Association	Y
		Financial planning and accounting	Y
		Staff Development; new staff orientation and on-boarding	Y
		Special projects and initiatives	Y

Department Name	Division Name	Associated Goal	Tactic	Results	Internal or External	Target Completion (FY)
Social Services	Child and Adult Services	2B	Develop a protocol between partners (Child Welfare, District Attorney's office, Probation, law enforcement, schools, and other victim and support service agencies), for identifying and intervening with youth who are, or who are at risk of being, victims of commercial sexual exploitation (CSEC).	Partners are coordinated in their response to youth who are victims of commercial sexual exploitation, providing safety and services for them and their families.	External	19-20
Social Services	Child and Adult Services	2B	Advance implementation of the Continuum of Care Reform by refining protocols and procedures for placement of youth in out-of-county and/or congregate care; training all Social Worker III and IV staff to facilitate Child and Family Teaming with the integration of the Child and Adolescent Needs and Strengths (CANS) assessment, and developing a Family/Parent Partner position to strengthen family functioning.	Youth and their families who are at-risk of out-of-home placement will be served in their communities and not sent to out-of-county or congregate care (group homes) placements unless a youth has unique treatment needs that cannot otherwise be met.	External	19-20
Social Services	Child and Adult Services	2B	Recruit, approve, and retain Resource Families (foster homes) by targeting outreach to geographic areas which lack foster homes, and conducting at least four recruitment/engagement activities per year throughout the county.	Mono County Resource Families reflect the geographic, ethnic, and racial diversity of youth for whom resource homes are needed.	External	19-20
Social Services	Conservatorships	4B	One supervisor/manager will be trained and certified by the CAPAPG Association to serve in the role of a Deputy Public Guardian/Probate Conservator.	Increased capacity to effectively and efficiently ensure the physical and financial safety of conserved residents under probate conservatorships.	Both	19-20
Social Services	Eligibility	2B	Contact 100%, and enroll 75%, of newly eligible households in Mono County under the new State policy for CalFresh Expansion to Social Security Income (SSI) Recipients .	Reduced hunger for approximately 28 seniors and people with disabilities who are newly eligible to CalFresh benefits.	External	19-20
Social Services	Eligibility	2A	Implement a Housing Support Program to assist families known to Social Services who are homeless or at imminent risk of homelessness	Eligible CalWorks families, and families/individuals with disabilities, are assisted through the Housing Support Program and the Housing Disability Income Advocacy Program to retain or obtain permanent housing.	External	19-20
Social Services	Senior Services	2B	Promote increased socialization, address functional limitations, and maintain health and independence for older adults.	Monthly, prevention-focused physical activities and increased opportunities for socialization at the Antelope Valley Senior Center and in the Tri-Valley area.	External	19-20
Social Services	Social Services	5C	Enable staff through effective training and coaching to advance their practice and knowledge-base within their discipline, implement legislative and programmatic changes, and advance their professional development goals.	Collectively, staff will advance their practice and knowledge-base through participation in over 1,100 workshop hours, including 15 local workshops with Inyo and Alpine Counties (UC Davis contracts), and 80 offsite workshops. Two Social Workers will graduate from department-sponsored Master of Social Work Programs; one in FY 19-20 and a second in FY 20-21.	Internal	19-20

## **SOCIAL SERVICES DEPARTMENT**

*(Public Assistance/Child & Adult Services, General Relief, Employment and Training, Senior Services, WRAP Program, County Children's Trust Fund)*

**DEPARTMENTS 868, 870, 874, 869, 875, 868, 112, 114**

### **DEPARTMENTAL (or Division) OVERVIEW**

Governed primarily by Federal and State mandates, the Department of Social Services provides services and programs critical to delivering a countywide system of health, security, and safety for vulnerable County residents. Operation of Social Services programs is funded by a combination of federal and state revenues, Social Services realignment, miscellaneous revenues, and a statutorily required County General Fund contribution.

The Department provides services under three main service areas: Health (Health Coverage and Food Assistance); Security (Financial Assistance and Workforce Services); and Safety (Child Welfare Services, Adult Protective Services, In-Home Supportive Services). In addition, the department manages the Mono County Senior Services Program, serves as the Probate Conservator, and operates county-wide emergency shelters.

For purposes of this document, our activities are separated into six budget funds:

1. Public Assistance & Health Insurance/Child Welfare & Adult Protective Services/Administration & Support
2. General Relief
3. Workforce Services (Employment & Training)
4. Senior Services
5. WRAP Program
6. County Children's Trust Fund

The Department serves the community with offices in Mammoth Lakes, Bridgeport, and Walker, and staffs an office inside Mammoth Hospital. The Department also operates the Antelope Valley Senior Center.

### **PROGRAMS AND SERVICES**

#### **Public Assistance & Health Insurance / Child Welfare & Adult Protective Services / Administration & Support**

- Public Assistance activities includes our programs for food aid (CalFresh) and cash aid (CalWORKs). Medi-Cal Eligibility includes our activities to provide affordable health coverage (Medi-Cal, Covered California, and County Medical Services Program).
- Protective Services for Children, Adults, and the Disabled includes our programs to investigate and respond to allegations of abuse or neglect of children (Child Welfare Services) and seniors or dependent adults (Adult Protective Services), our In-Home Supportive Services (IHSS) program for seniors or disabled adults who need help to stay safely in their home.
- Administration & Support provides the infrastructure needed to operate the direct service areas of the Department. This includes policy direction, financial planning and accounting, staff development, disaster response, and special projects.

#### **General Relief**

The General Relief/Assistance fund provides short-term, monetary support for indigent adults. The fund is also used to purchase shelter supplies for the operation of county-wide emergency shelters.

**Workforce Services (Employment and Training)**

The Social Services Employment and Training Programs (aka Workforce Services) include: Welfare to Work, Workforce Innovation and Opportunity Act, and Employment Centers in Mammoth and Walker. The department helps individuals achieve self-sufficiency through workforce related efforts including career counseling, setting educational goals, interviewing techniques, resume and master application development, job retention advice, and job search and job placement assistance.

**Senior Services**

The Mono County Senior Services Program provides a variety of services:

Elder Nutrition Program - Home Delivered Meals are available to home-bound or isolated individuals, including weekly delivery of meals. The Program also provides nutrition education and counseling to seniors. Transportation services include the provision of bus passes to seniors to provide access to community resources. In addition, individuals who have been assessed as needing assistance with transportation because of physical or cognitive difficulties are able to receive assisted transportation services. Assisted transportation is primarily used to access out of area medical care; however, assistance with accessing local medical and other support services is also available. The Antelope Valley Senior Center is open five days a week and provides congregate meals, senior activities and access to a wide range of information and services. A combination of hot and frozen meals are delivered to eligible residents of the Tri-Valley area (Benton, Hammil Valley, and Chalfant).

**WRAP Program**

Wraparound, or WRAP for short, is intended to shift the service delivery focus to a needs-driven, strengths-based approach. It is a definable way of partnering with families with complex needs who are involved with the Child Welfare and Probation systems by providing intensive services using a team approach. It is intended as a preventative measure, and as an alternative to institutional care, by bringing needed services and supports to the child and family in the community setting.

The child and family work directly with a team comprised of professionals, including Behavioral Health, and members of the family's community - people chosen by the family. The team develops an individualized service plan that describes all the needs identified by the child and family and how those needs will be met.

**County Children's Trust Fund**

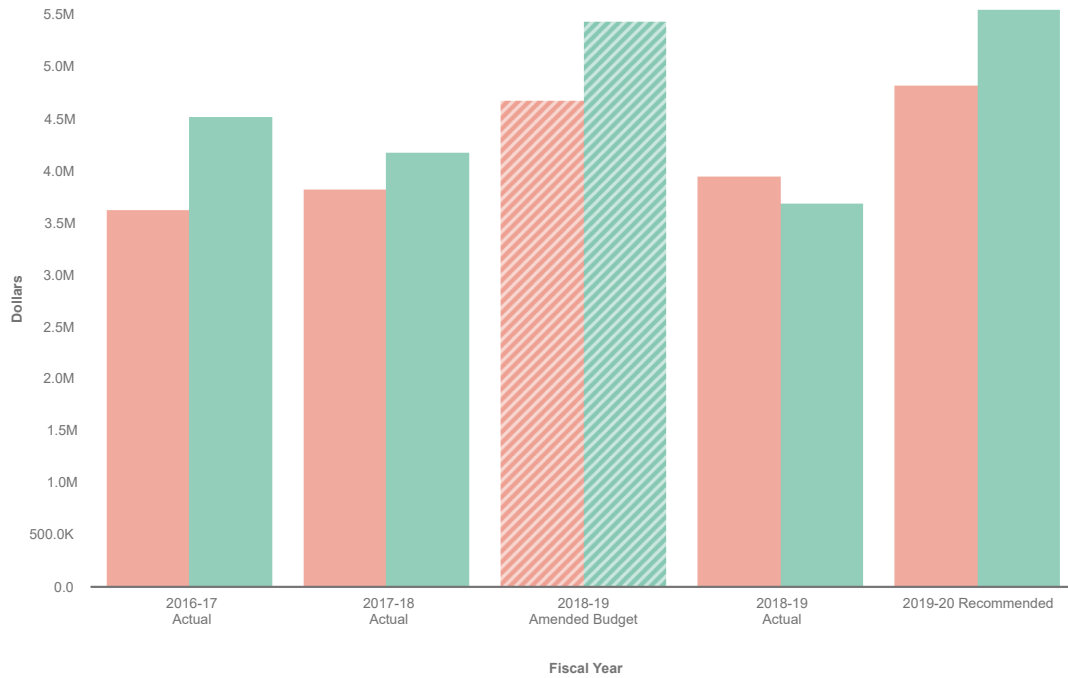
The Mono County BOS designated the Mono County Child Abuse Prevention Council to oversee the County Children's Trust Fund for the prevention of child abuse. Child Abuse Prevention Councils are community councils whose primary purpose is to coordinate the community's efforts to prevent and respond to child abuse and neglect.

Counties receiving less than twenty thousand dollars \$20,000 for the year in their County Children's Trust Fund (CCTF) from birth certificate fees are granted the difference from Community Based Child Abuse Prevention (CBCAP) funds necessary to bring the trust fund up to \$20,000. Mono County receives less than \$1,000 per year in CCTF dollars and therefore receives CBCAP funds to bring the CCTF up to \$20,000. Both CCTF and CBCAP dollars are held in this fund and used to fund the activities and coordination of the Child Abuse Prevention Council.

**DESCRIBE WHAT IS NOT INCLUDED IN THIS BUDGET**

N/A

# Social Services 110-51-868



Sort **Large to Small**

- Revenues
- Expenses

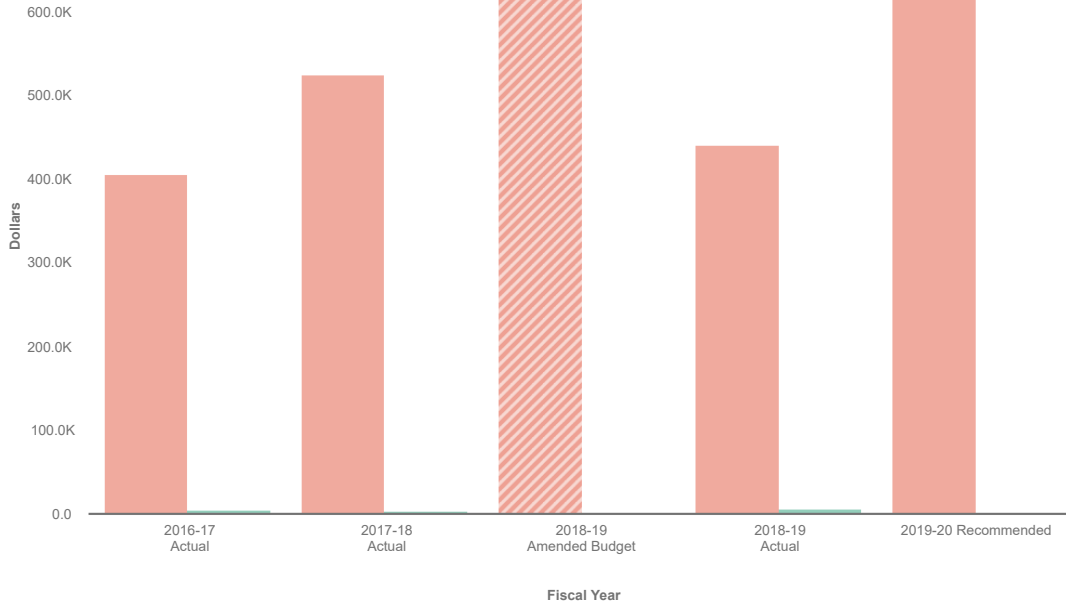
Collapse All	2016-17 Actual	2017-18 Actual	2018-19 Amended Budget	2018-19 Actual	2019-20 Recommended
<b>▼ Expenses</b>	\$ 3,628,258	\$ 3,821,545	\$ 4,672,761	\$ 3,952,387	\$ 4,817,889
▶ Salaries & Benefits	2,204,661	2,416,292	2,986,951	2,613,283	3,104,961
▶ Services and Supplies	1,328,837	1,345,273	1,504,249	1,281,432	1,523,227
▶ Support of Other	68,024	55,906	81,561	45,498	89,700
▶ Transfers Out	26,735	4,074	100,000	12,174	100,000
<b>▼ Revenues</b>	4,522,293	4,182,161	5,430,539	3,687,842	5,539,296
▶ Intergovernmental	3,288,989	2,669,373	3,695,535	2,484,254	2,908,265
▶ Transfers In	1,214,843	1,491,094	1,717,644	1,185,989	2,606,351
▶ Interest & Rents	16,491	21,292	17,360	17,072	24,680
▶ Miscellaneous Revenues	1,971	403	0	526	0
<b>Revenues Less Expenses</b>	\$ 894,035	\$ 360,616	\$ 757,778	\$ -264,545	\$ 721,407

# Aid Programs 110-52-870



Sort **Large to Small**

- Expenses
- Revenues

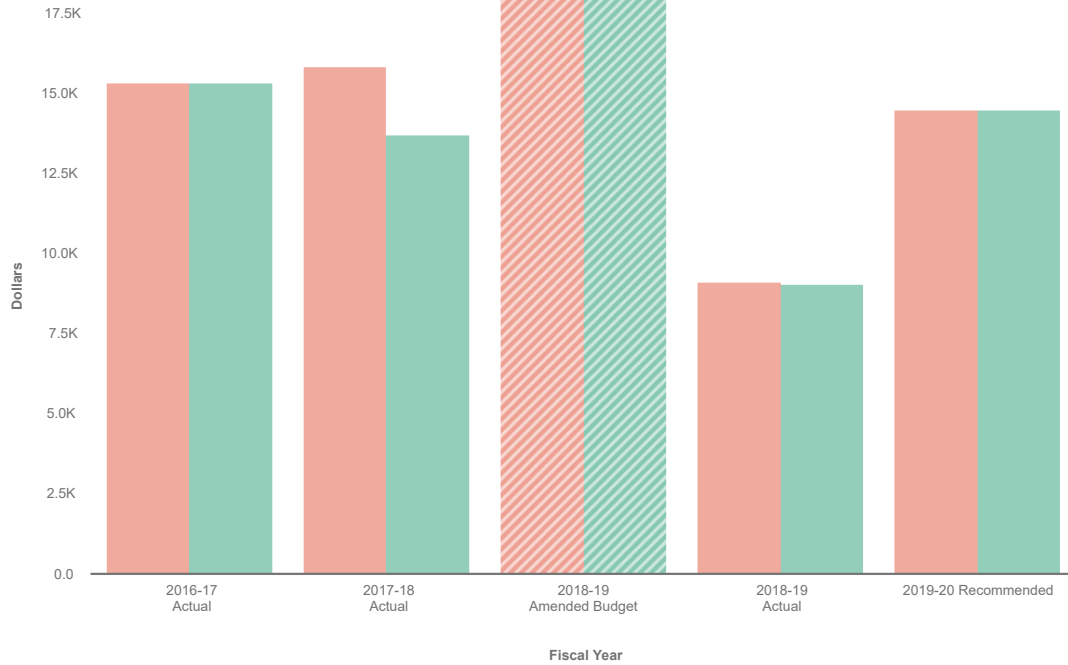


	2016-17 Actual	2017-18 Actual	2018-19 Amended Budget	2018-19 Actual	2019-20 Recommended
<b>Collapse All</b>					
<b>▼ Revenues</b>	\$ 4,609	\$ 3,424	\$ 0	\$ 6,147	\$ 0
▶ Charges for Services	4,609	3,424	0	6,147	0
<b>▼ Expenses</b>	405,176	524,313	688,092	440,430	668,000
▶ Support of Other	405,176	524,313	688,092	440,430	668,000
<b>Revenues Less Expenses</b>	\$ -400,567	\$ -520,889	\$ -688,092	\$ -434,283	\$ -668,000

Data filtered by Types, SOCIAL SERVICES, AID PROGRAMS and exported on July 5, 2019. Created with OpenGov



# General Relief 110-53-874



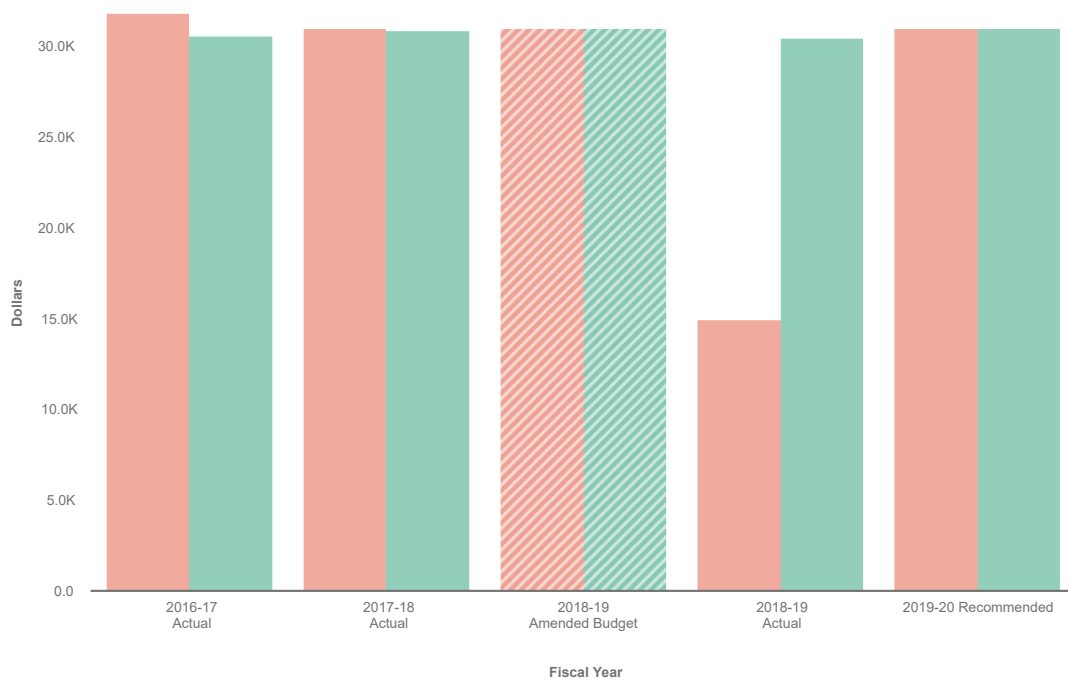
Sort **Large to Small**

- Expenses
- Revenues

Collapse All	2016-17 Actual	2017-18 Actual	2018-19 Amended Budget	2018-19 Actual	2019-20 Recommended
<b>▼ Revenues</b>	\$ 15,335	\$ 13,726	\$ 18,000	\$ 9,065	\$ 14,500
▶ Transfers In	14,575	10,817	18,000	4,195	14,500
▶ Charges for Services	760	2,909	0	4,870	0
<b>▼ Expenses</b>	15,335	15,841	18,000	9,119	14,500
▶ Support of Other	15,335	8,896	18,000	8,568	14,500
▶ Services and Supplies	0	6,945	0	551	0
<b>Revenues Less Expenses</b>	\$ 0	\$ -2,115	\$ 0	\$ -54	\$ 0

Data filtered by Types, SOCIAL SERVICES, AID TO INDIGENTS and exported on July 5, 2019. Created with OpenGov

# Children's Trust 114-56-868



Sort **Large to Small**

- Revenues
- Expenses

Expand All	2016-17 Actual	2017-18 Actual	2018-19 Amended Budget	2018-19 Actual	2019-20 Recommended
<b>Revenues</b>	\$ 30,572	\$ 30,881	\$ 31,000	\$ 30,452	\$ 31,000
▶ Intergovernmental	29,592	29,799	29,958	29,567	29,567
▶ Charges for Services	908	1,071	992	901	1,333
▶ Interest & Rents	73	10	50	-15	100
<b>Expenses</b>	31,771	31,000	31,000	14,946	31,000
▶ Services and Supplies	31,771	31,000	31,000	14,946	31,000
<b>Revenues Less Expenses</b>	\$ -1,199	\$ -119	\$ 0	\$ 15,506	\$ 0

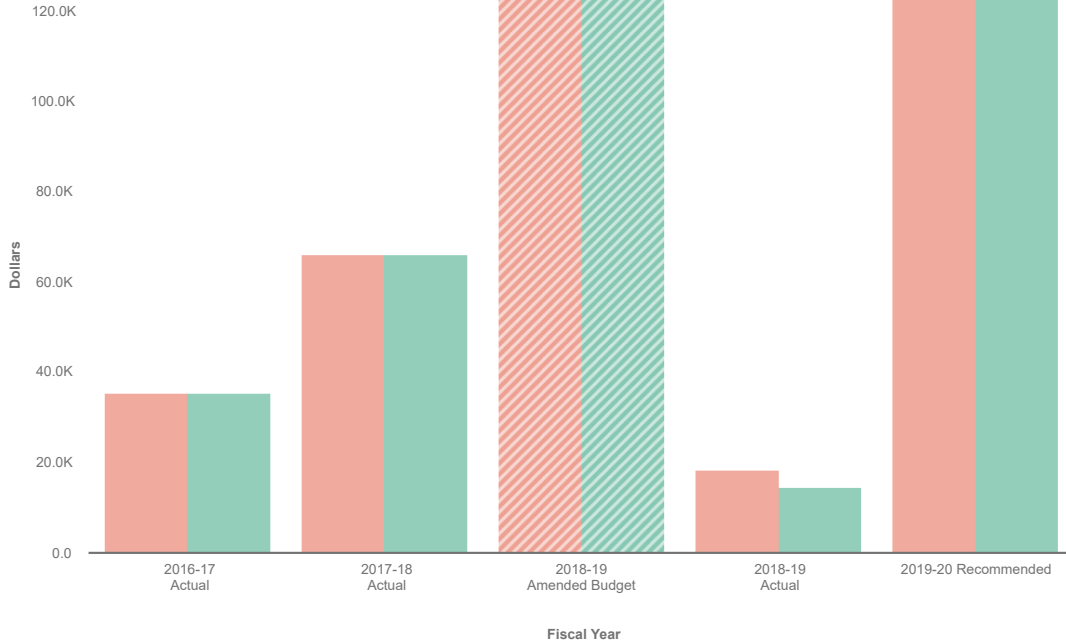
Data filtered by Types, DSS-BIRTH CERT CHILDREN'S TRUST FUND and exported on July 5, 2019. Created with OpenGov

# WRAP - Foster Care 112-54-868



Sort **Large to Small**

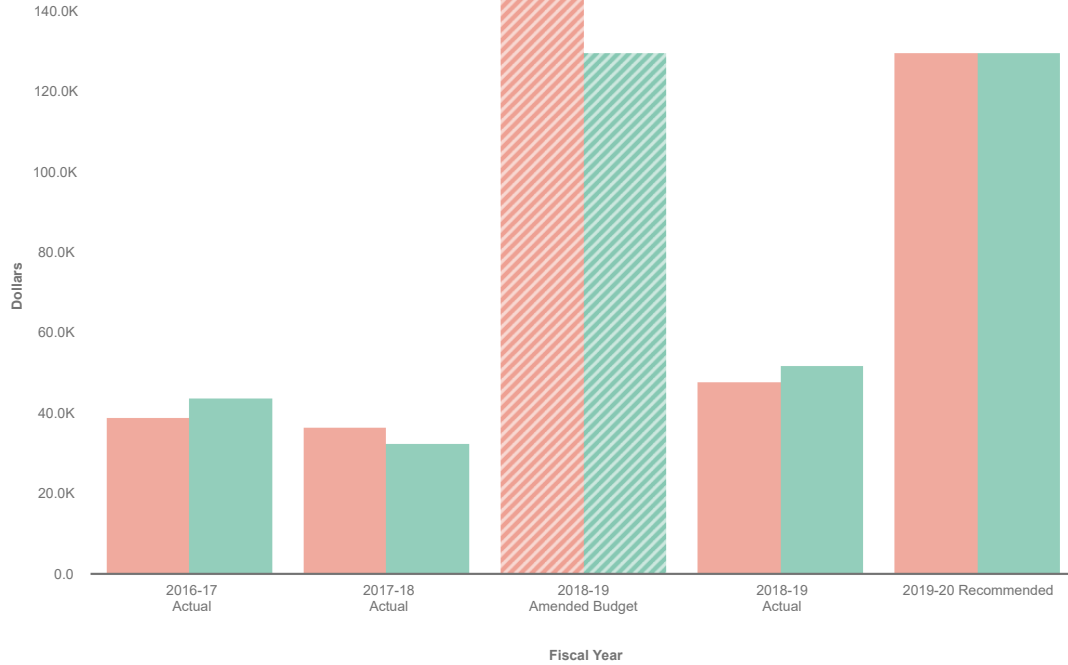
- Expenses
- Revenues



Collapse All	2016-17 Actual	2017-18 Actual	2018-19 Amended Budget	2018-19 Actual	2019-20 Recommended
<b>▼ Revenues</b>	\$ 35,318	\$ 65,962	\$ 127,529	\$ 14,558	\$ 127,529
▶ Transfers In	35,318	65,962	127,529	14,558	127,529
<b>▼ Expenses</b>	35,318	65,962	127,529	18,312	127,529
▶ Transfers Out	35,318	65,962	90,000	14,558	71,499
▶ Other Expenses	0	0	37,529	3,150	37,529
▶ Services and Supplies	0	0	0	604	18,501
<b>Revenues Less Expenses</b>	\$ 0	\$ 0	\$ 0	\$ -3,754	\$ 0

Data filtered by Types, DSS-WARAPAROUND (FOSTER CARE) and exported on July 5, 2019. Created with OpenGov

# Workforce Investment Act 111-56-869



Sort **Large to Small**

- Expenses
- Revenues

Collapse All	2016-17 Actual	2017-18 Actual	2018-19 Amended Budget	2018-19 Actual	2019-20 Recommended
<b>▼ Revenues</b>	\$ 43,877	\$ 32,603	\$ 129,662	\$ 52,020	\$ 129,662
▶ Intergovernmental	43,877	32,603	129,662	52,020	129,662
<b>▼ Expenses</b>	39,132	36,593	143,399	47,911	129,662
▶ Services and Supplies	32,976	28,414	122,399	36,292	108,662
▶ Salaries & Benefits	6,156	8,179	21,000	11,619	21,000
<b>Revenues Less Expenses</b>	\$ 4,745	\$ -3,990	\$ -13,737	\$ 4,109	\$ 0

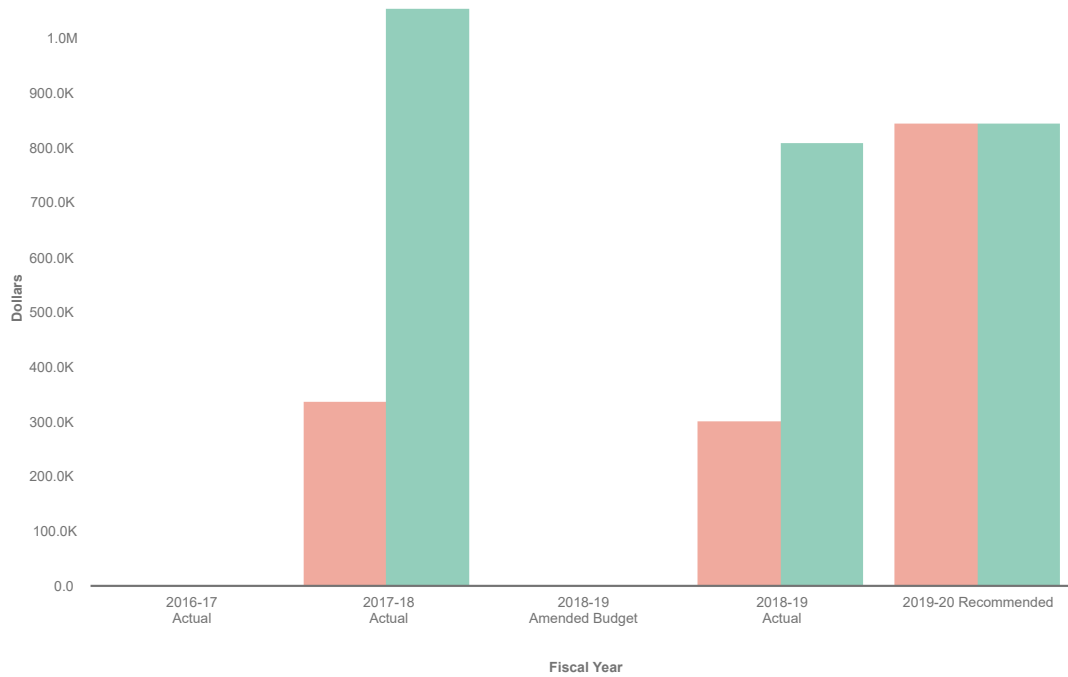
Data filtered by Types, EMPLOYERS TRAINING RESOURCE and exported on July 5, 2019. Created with OpenGov

# DSS 1991 Realignment 117-51-868



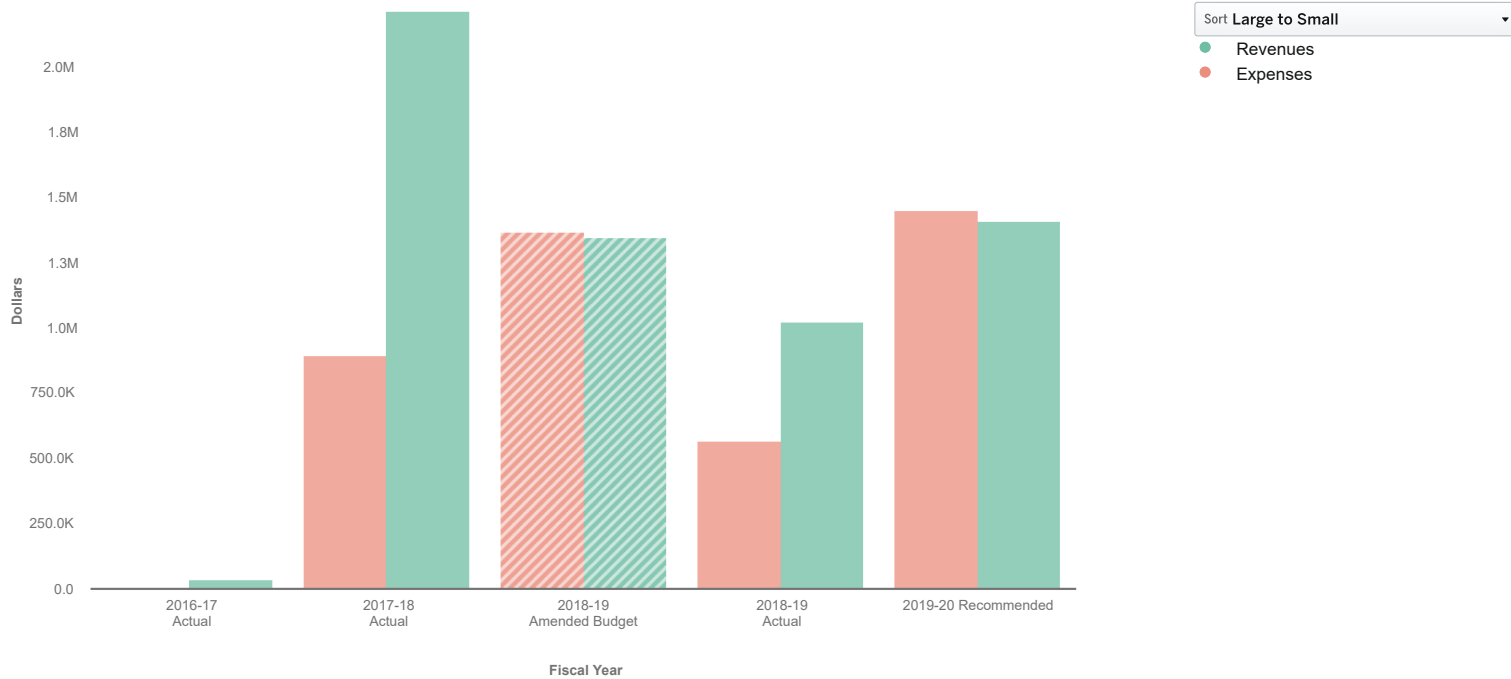
Sort **Large to Small**

- Revenues
- Expenses



	2016-17 Actual	2017-18 Actual	2018-19 Amended Budget	2018-19 Actual	2019-20 Recommended
<b>Collapse All</b>					
<b>▼ Revenues</b>	\$ 0	\$ 1,052,904	\$ 0	\$ 809,855	\$ 846,225
▶ Intergovernmental	0	1,048,285	0	797,315	846,225
▶ Interest & Rents	0	4,619	0	12,540	0
<b>▼ Expenses</b>	0	337,865	0	302,131	846,225
▶ Transfers Out	0	337,865	0	302,131	846,225
<b>Revenues Less Expenses</b>	\$ 0	\$ 715,039	\$ 0	\$ 507,724	\$ 0

# DSS 2011 Realignment 118-51-868



Collapse All	2016-17 Actual	2017-18 Actual	2018-19 Amended Budget	2018-19 Actual	2019-20 Recommended
<b>Revenues</b>	\$ 35,906	\$ 2,207,900	\$ 1,344,426	\$ 1,024,349	\$ 1,406,626
▶ Intergovernmental	35,906	1,251,786	1,343,926	1,003,189	1,393,926
▶ Transfers In	0	953,258	0	0	0
▶ Interest & Rents	0	2,856	500	21,160	12,700
<b>Expenses</b>	0	894,838	1,367,644	567,292	1,449,155
▶ Transfers Out	0	894,838	1,367,644	567,292	1,449,155
<b>Revenues Less Expenses</b>	\$ 35,906	\$ 1,313,062	\$ -23,218	\$ 457,058	\$ -42,529

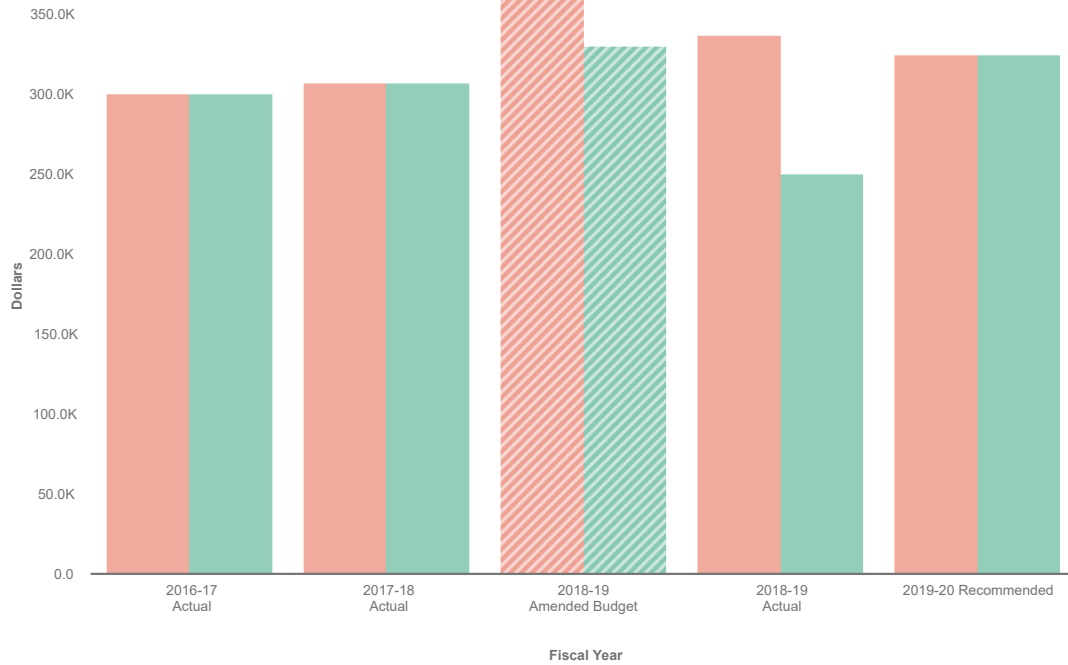
Data filtered by Types, DSS 2011 Realignment and exported on July 5, 2019. Created with OpenGov

# Senior Center 110-56-875



Sort **Large to Small**

- Expenses
- Revenues



Collapse All	2016-17 Actual	2017-18 Actual	2018-19 Amended Budget	2018-19 Actual	2019-20 Recommended
<b>Revenues</b>	\$ 299,933	\$ 306,876	\$ 329,749	\$ 250,247	\$ 324,210
▶ Transfers In	154,363	152,977	180,937	187,156	174,024
▶ Charges for Services	115,570	123,899	118,812	40,591	120,186
▶ Intergovernmental	30,000	30,000	30,000	22,500	30,000
<b>Expenses</b>	299,933	306,876	360,319	336,678	324,210
▶ Salaries & Benefits	149,419	166,943	211,586	198,622	223,665
▶ Services and Supplies	150,514	139,933	148,733	138,057	100,545
<b>Revenues Less Expenses</b>	\$ 0	\$ 0	\$ -30,570	\$ -86,431	\$ 0

Data filtered by Types, SOCIAL SERVICES, SENIOR SERVICES - ESAAA and exported on July 5, 2019. Created with OpenGov