

# MONO COUNTY SHERIFF

*A Commitment to Community Safety and Service*



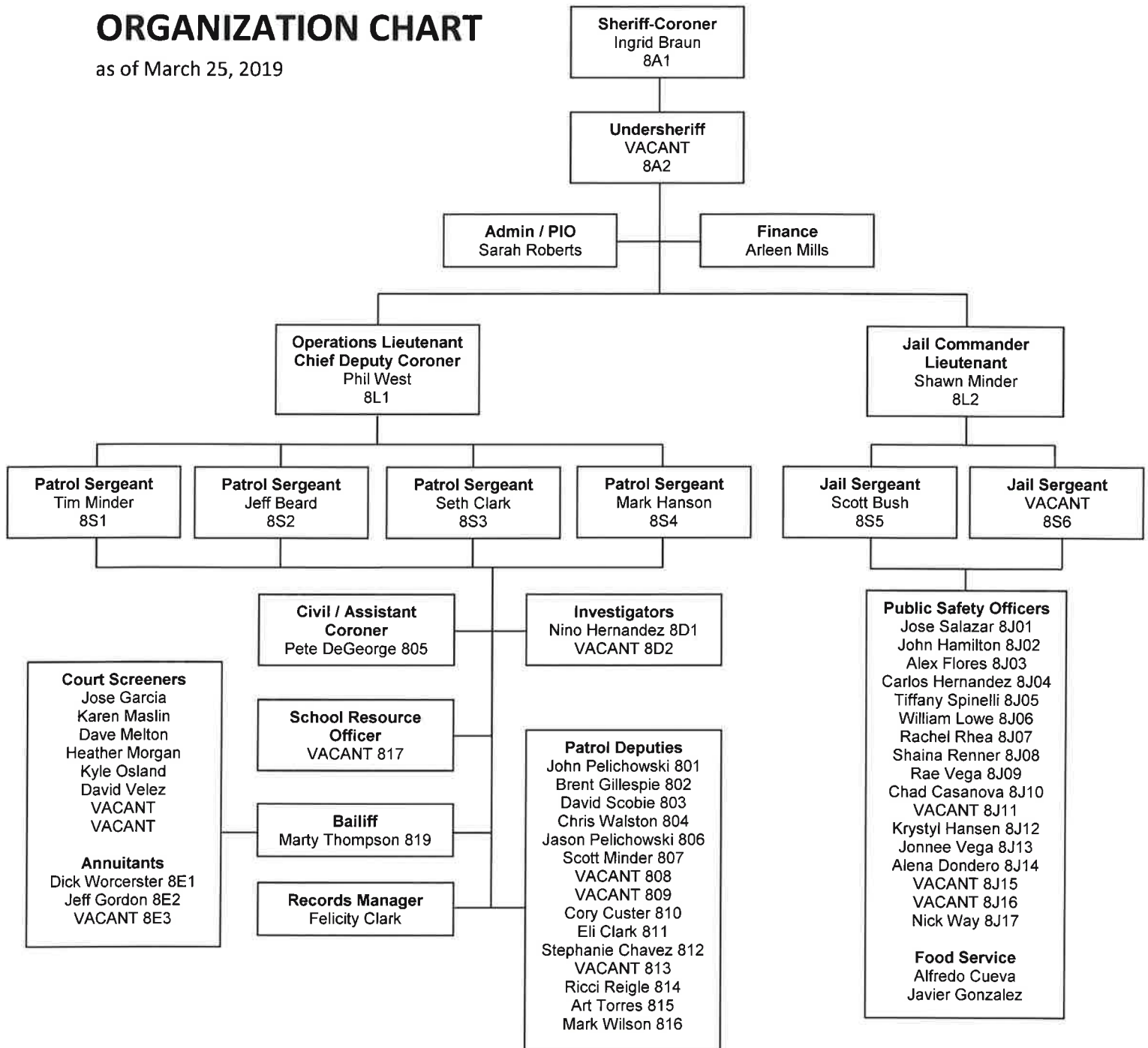
**Ingrid Braun**  
Sheriff-Coroner

**MONO COUNTY SHERIFF'S OFFICE**

**Phillip West**  
Undersheriff

## ORGANIZATION CHART

as of March 25, 2019



# SHERIFF

## Core Services

		Mandated?	
1	LAW ENFORCEMENT	Preserve the peace (GC 26600)	Y
		Make arrests (GC 26601)	Y
		Investigate crimes (GS 26602)	Y
		Patrol	N

		Mandated?	
2	LAW ENFORCEMENT	Civil processes (GC 26607, 26608, 26609)	Y
		Court Bailiff (GC 26611)	Y
		Search and Rescue (GC 26614)	Y
		Coroner Functions (GC 27460)	Y

3	JAIL	House inmates pending court appearance (GC 26605)	Y
		House convicted misdemeanants (GC 26605)	Y
		House certain convicted felons (AB 109)	Y
		Provide programming to inmates	Y

4	EMERGENCY SERVICES	County Director of Emergency Services (MCC 2.60.090)	Y
		9-1-1 Public Safety Answering Point / Dispatch	Y
		Code Red / IPAWS coordinator	N

5	ESSENTIAL SERVICES	Boating patrol	N
		OHV Patrol	N
		School Resource Officer	N
		Inmate workers	N

6	ESSENTIAL SERVICES	CCW Permits	Y
		Explosives Permits	Y

Department Name	Division Name	Associated Goal	Tactic	Results	Internal or External	Target Completion (FY)
Sheriff's Office	Administration	1A / 1C / 2B	Partner with Behavioral Health and Paramedics to address mental health crisis response	Creation of an Interagency Crisis Response Team - composed of Law Enforcement, Medical and Behavioral Health professionals and trained volunteers	External	19-20
Sheriff's Office	Administration	1A / 1E	Improve, repair and replace aging Radio and Communications systems	Reduced radio outages and fewer first responder complaints of radio problems	External	Ongoing
Sheriff's Department	Administration	1A / 4B	Support County and Town efforts for an All Hazards Incident Management Team (AHIMT)	Provide training and include Sheriff's Office staff in AHIMT activities	External	Ongoing
Sheriff's Office	Administration	2B	Build school partnerships to reduce potential of school violence	Maintain School Resource Officer position and invest in Explorer Program	External	Ongoing
Sheriff's Office	Administration	3D / 5B	Develop and improve safety and prevention efforts to reduce Workers' Compensation liability	Reduced Workers' Compensation claims	Internal	Ongoing
Sheriff's Office	Court	4E	Update Court Security plans and agreements	Completion of security plan and updated MOU	External	19-20
Sheriff's Office	Jail	1A / 1E	Partner with Public Works in design and plan of new grant-funded facility	Selection of Architect/Construction Management Team and completion of design documents	Internal	21-22
Sheriff's Office	Jail	1A / 5D	Hire qualified law enforcement professionals to fill vacant Deputy Sheriff and Public Safety Officer positions	Successful hiring and completion of probation for all vacant positions	Internal	Ongoing
Sheriff's Office	Jail	1B / 2B	Partner with Behavioral Health and Public Health to implement Medication Assisted Treatment in the Jail and the Community	Continued participation in MAT Grant	External	19-20

# **SHERIFF'S OFFICE DEPARTMENT 440**

## **DEPARTMENTAL OVERVIEW**

The Sheriff's Office provides law enforcement services for the County, including: Patrol; Jail; 9-1-1 Call Center; Dispatch; Civil Services; Coroner; Emergency Management; Investigative; and Administrative.

## **PROGRAMS AND SERVICES**

The Sheriff's Office provides law enforcement services for everyone who lives, works and travels in Mono County. We strive to maintain a high quality of life and a true sense of safety for the people who live, work and visit Mono County. We patrol over 3,300 square miles of terrain by car, snowmobile, sno-cat, ATV, boat, and foot. We answer all 9-1-1 and non-emergency calls 24-hours a day, dispatching all law enforcement, medical and fire first responders. We investigate crimes; comfort victims; arrest violators of the law; enforce traffic laws; patrol schools; attend community events; and assist lost and weary travelers. The Mono County Jail houses those arrested for a variety of crimes, from the most minor offense to the most serious. The inmates may be there just for a few hours or for as long as several years.

The Sheriff's Office is also the County Coroner, investigating every death that occurs in Mono County. We also provide Civil Process services, including evictions, restraining order services and enforcement of civil judgements. In addition to the above services, the Sheriff's Office provides the following services, each of which has a separate budget:

### Jail and Dispatch – Budget 460

The Mono County Jail and Dispatch Center is responsible for the booking and release of inmates, and the maintenance of records, warrants and criminal history information. The Dispatch Center receives all 9-1-1 and non-emergency calls for service. We provide dispatch services for the Sheriff's Office, Mammoth Lakes Police Department, Mono County Paramedics and all fire departments within Mono County.

### Boating Enforcement – Budget 445

Boating Enforcement is fully funded by the State of California's Division of Boating and Waterways Boating Safety and Enforcement Financial Aid program. The Boating Enforcement program performs boating safety and enforcement activities on Mono County's 23 lakes, as well as provide aid to the Mono County Paramedics and Search and Rescue when needed. Our Boating operation also assists stranded vessels and investigates boating-related collisions.

### Search and Rescue – Budget 450

Volunteers work under the Mono County Sheriff's Office and the Search and Rescue Coordinator to respond to a wide variety of missions in all types of terrain and weather. They perform rescues and evacuations, as well as assist in searches for missing persons. Search and Rescue volunteers must pass a background check and complete an intensive training regimen.

Court Security – Budget 455

The Court Security detail provides bailiff and courthouse security at the Mammoth Lakes and Bridgeport courthouses. One Deputy Sheriff supervises the Court Screeners, and together they are responsible for ensuring the safety of the judges, court staff and those utilizing the court facilities.

Office of Emergency Services – Budget 465

The Office of Emergency Services coordinates all activities of all county departments relating to the preparation and implementation of the County's Emergency Operations Plan (EOP), as well as the response efforts of local, state, and federal agencies. Emergency Services works with our partner agencies during any local state of emergency, including wildfires, avalanches, flooding, and other natural and man-made disasters.

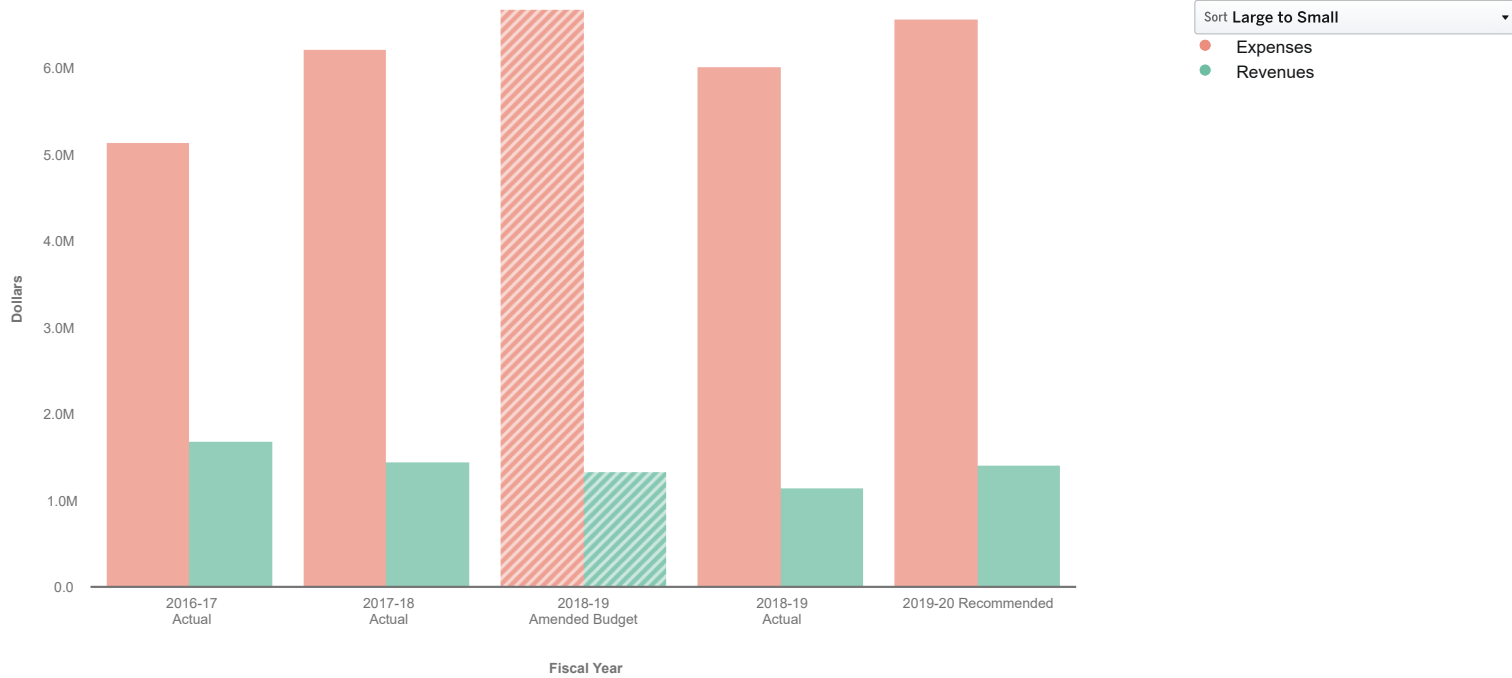
Off-Highway Vehicle Unit – Budget 145

The Off-Highway Vehicle (OHV) program is fully funded through a combination of California State Parks OHV Grant and OHV License fees. The OHV Unit performs education and enforcement activities, as well as provide aid to the Mono County Paramedics and Search and Rescue when needed. The OHV Unit is deployed year-round to ensure the safety of Mono County's off-roading public.

**DESCRIBE WHAT IS NOT INCLUDED IN THIS BUDGET**

The Sheriff's Office will be requesting one-time funding to promote two (2) Public Safety Officers to the rank of Deputy Sheriff. These promotions will require sending the two employees to a six-month Basic Peace Officer Training in Riverside County, including lodging.

# Sheriff 100-22-440



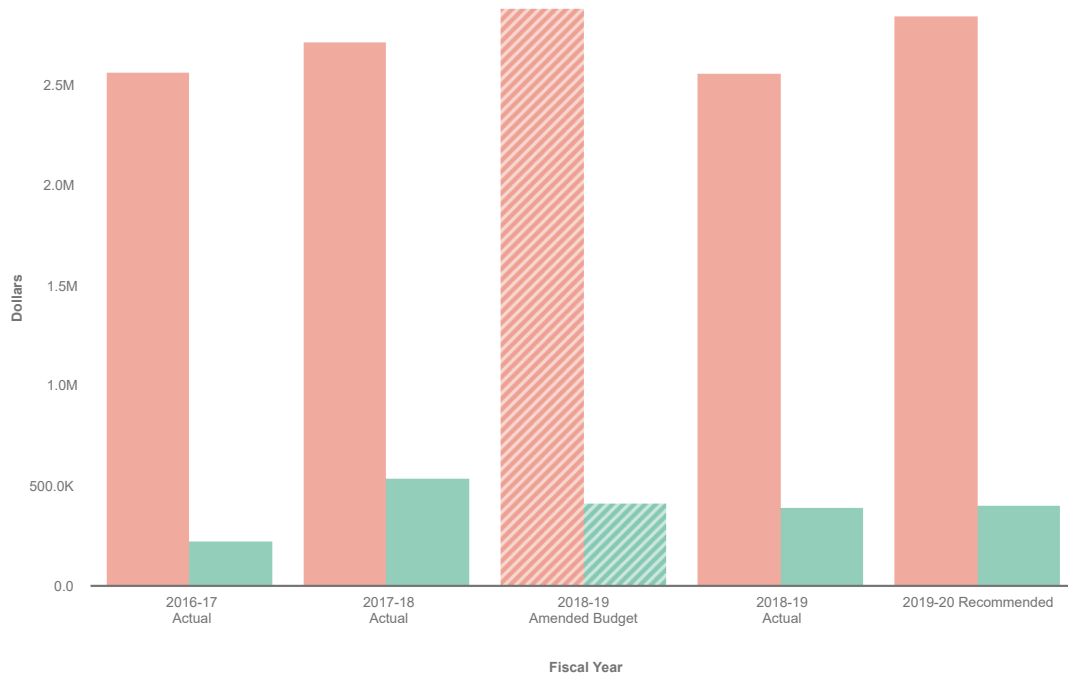
Collapse All	2016-17 Actual	2017-18 Actual	2018-19 Amended Budget	2018-19 Actual	2019-20 Recommended
<b>Revenues</b>	\$ 1,690,414	\$ 1,452,548	\$ 1,333,368	\$ 1,145,752	\$ 1,411,168
Intergovernmental	1,292,872	1,361,781	1,286,168	1,108,685	1,384,168
Charges for Services	365,714	74,272	27,000	27,511	27,000
Transfers In	1,832	10,364	18,300	0	0
Miscellaneous Revenues	4,613	6,131	1,900	9,557	0
Interest & Rents	18,200	0	0	0	0
Licenses, Permits & Franchises	6,945	0	0	0	0
Other Financing Sources	238	0	0	0	0
<b>Expenses</b>	5,138,753	6,211,720	6,666,766	6,012,940	6,565,797
Salaries & Benefits	3,810,000	4,387,114	4,714,709	4,228,755	4,676,179
Services and Supplies	1,276,425	1,824,605	1,952,057	1,784,185	1,889,618
Capital Outlay	52,328	0	0	0	0
<b>Revenues Less Expenses</b>	\$ -3,448,339	\$ -4,759,172	\$ -5,333,398	\$ -4,867,187	\$ -5,154,629

# Jail 100-23-460



Sort **Large to Small**

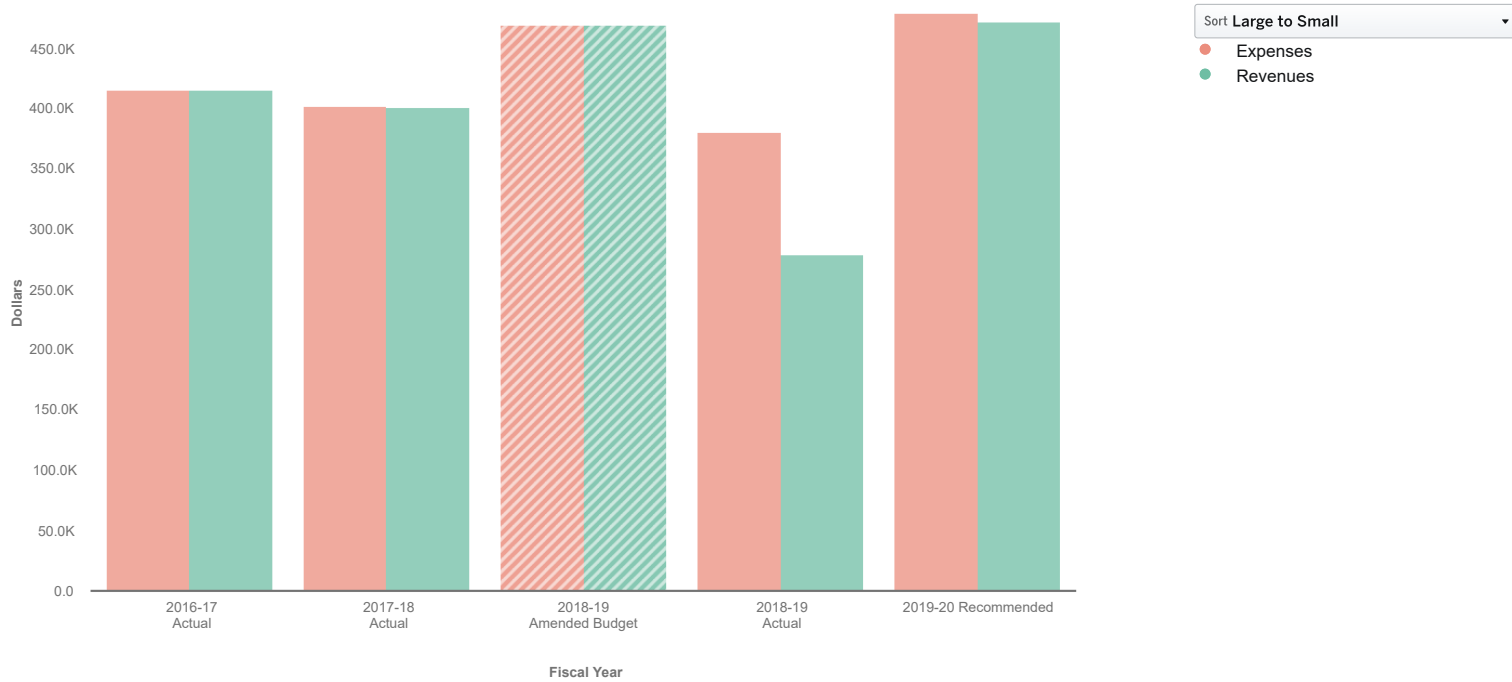
- Expenses
- Revenues



Collapse All	2016-17 Actual	2017-18 Actual	2018-19 Amended Budget	2018-19 Actual	2019-20 Recommended
<b>Revenues</b>	\$ 225,651	\$ 542,372	\$ 417,469	\$ 393,123	\$ 405,968
▶ Charges for Services	0	292,321	383,542	383,542	389,288
▶ Transfers In	198,294	233,891	18,300	0	0
▶ Intergovernmental	27,357	16,160	15,627	9,582	16,680
<b>Expenses</b>	2,562,303	2,716,457	2,876,655	2,559,588	2,841,632
▶ Salaries & Benefits	2,010,606	2,090,500	2,214,860	2,077,737	2,206,290
▶ Services and Supplies	551,697	625,957	661,795	481,851	635,342
<b>Revenues Less Expenses</b>	\$ -2,336,652	\$ -2,174,085	\$ -2,459,186	\$ -2,166,464	\$ -2,435,664

Data filtered by Types, GENERAL FUND, JAIL and exported on July 5, 2019. Created with OpenGov

# Court Security 100-22-455

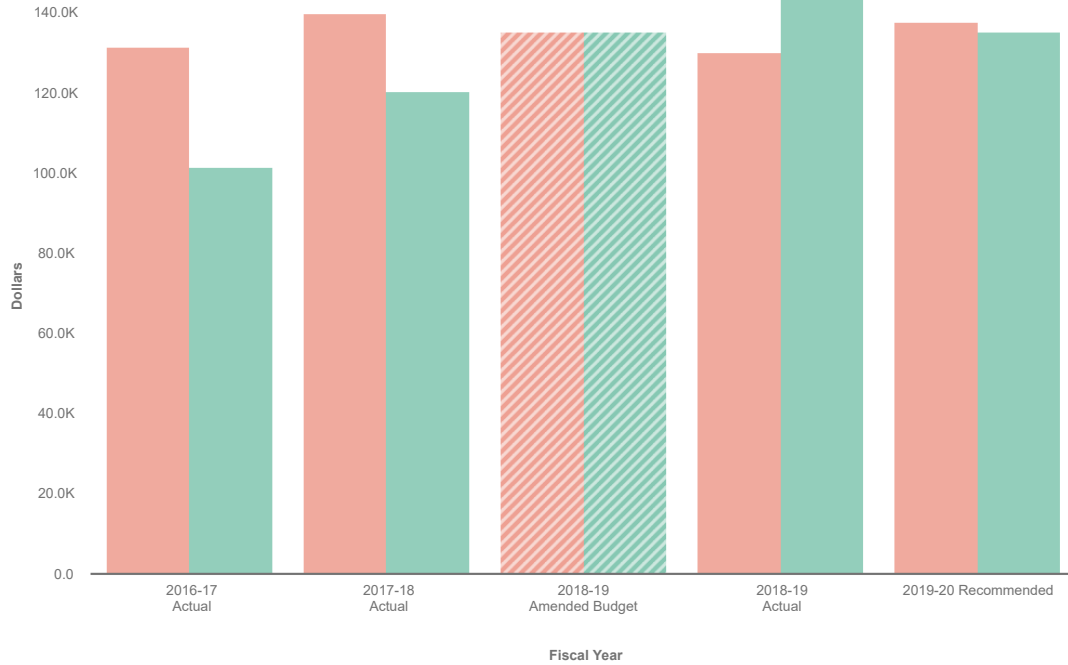


Collapse All	2016-17 Actual	2017-18 Actual	2018-19 Amended Budget	2018-19 Actual	2019-20 Recommended
<b>Revenues</b>	\$ 415,594	\$ 400,762	\$ 468,748	\$ 278,728	\$ 471,834
<b>Transfers In</b>	415,594	400,762	468,748	278,728	471,834
<b>Expenses</b>	415,594	401,689	468,748	380,429	478,003
<b>Salaries &amp; Benefits</b>	397,664	365,838	417,711	353,944	427,033
<b>Services and Supplies</b>	17,930	35,851	51,037	26,485	50,970
<b>Revenues Less Expenses</b>	\$ 0	\$ -927	\$ 0	\$ -101,701	\$ -6,169

Data filtered by Types, GENERAL FUND, COURT SECURITY and exported on July 5, 2019. Created with OpenGov



# Boating Enforcement 100-22-445



Sort **Large to Small**

- Expenses
- Revenues

Collapse All	2016-17 Actual	2017-18 Actual	2018-19 Amended Budget	2018-19 Actual	2019-20 Recommended
<b>▼ Revenues</b>	\$ 101,522	\$ 120,414	\$ 135,227	\$ 143,750	\$ 135,227
▶ Intergovernmental	101,522	120,414	135,227	143,750	135,227
<b>▼ Expenses</b>	131,369	139,582	135,227	129,900	137,615
▶ Salaries & Benefits	112,181	111,198	95,890	111,014	101,371
▶ Services and Supplies	19,188	28,383	39,337	18,886	36,244
<b>Revenues Less Expenses</b>	\$ -29,847	\$ -19,167	\$ 0	\$ 13,850	\$ -2,388

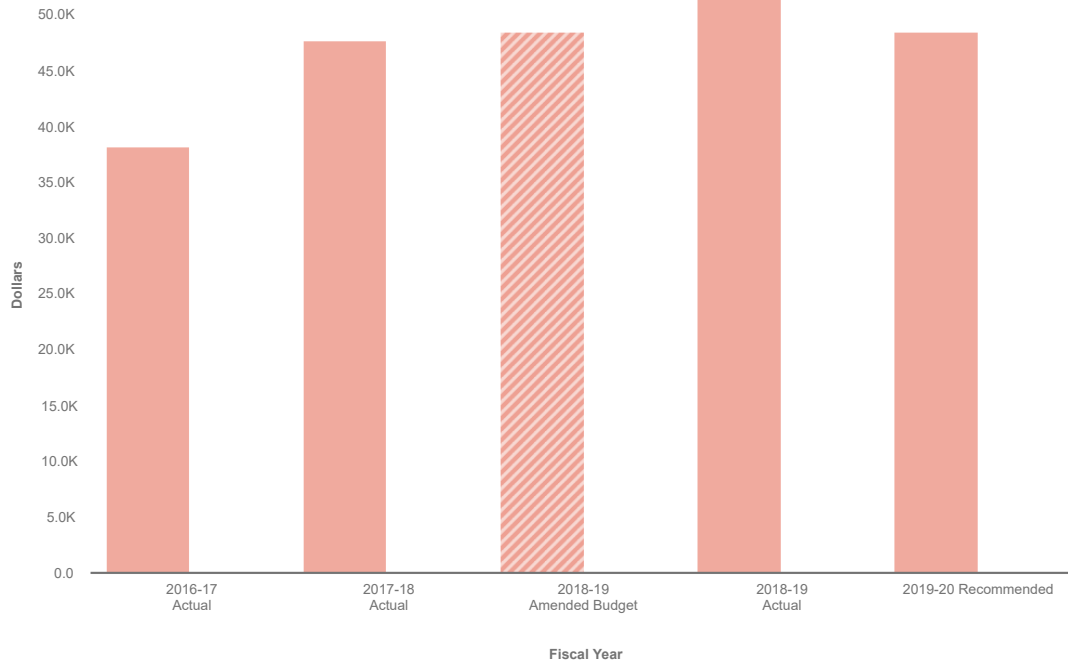
Data filtered by Types, GENERAL FUND, BOATING LAW ENFORCEMENT and exported on July 5, 2019. Created with OpenGov

# Search and Rescue 100-27-450



Sort **Large to Small**

- Expenses
- Revenues



Expand All	2016-17 Actual	2017-18 Actual	2018-19 Amended Budget	2018-19 Actual	2019-20 Recommended
▼ Expenses	\$ 38,206	\$ 47,708	\$ 48,434	\$ 51,634	\$ 48,434
▶ Services and Supplies	38,206	47,708	48,434	51,634	48,434
<b>Revenues Less Expenses</b>	<b>\$ -38,206</b>	<b>\$ -47,708</b>	<b>\$ -48,434</b>	<b>\$ -51,634</b>	<b>\$ -48,434</b>

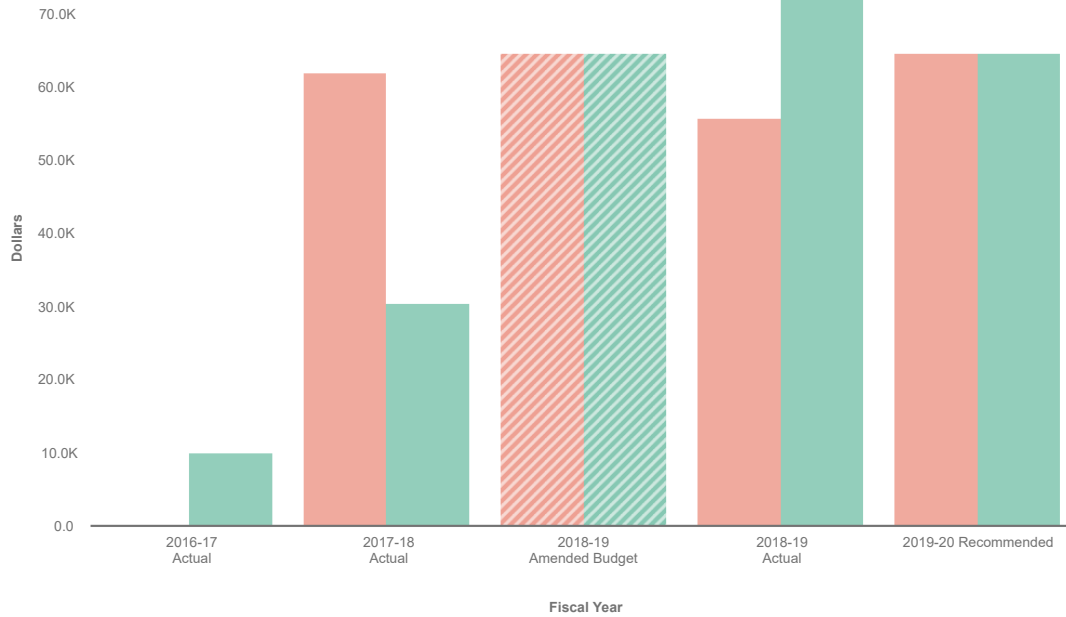
Data filtered by Types, GENERAL FUND, SEARCH AND RESCUE and exported on July 5, 2019. Created with OpenGov

# Off Highway Vehicle 145-22-440



Sort **Large to Small**

- Revenues
- Expenses



Collapse All	2016-17 Actual	2017-18 Actual	2018-19 Amended Budget	2018-19 Actual	2019-20 Recommended
<b>▼ Revenues</b>	\$ 10,060	\$ 30,516	\$ 64,554	\$ 78,769	\$ 64,554
▶ Intergovernmental	0	0	48,323	71,977	48,323
▶ Licenses, Permits & Franchises	10,060	16,801	16,231	6,810	16,231
▶ Other Financing Sources	0	13,775	0	0	0
▶ Interest & Rents	0	-60	0	-18	0
<b>▼ Expenses</b>	0	61,970	64,554	55,649	64,554
▶ Salaries & Benefits	0	37,494	50,820	45,340	50,820
▶ Services and Supplies	0	24,476	13,734	10,309	13,734
<b>Revenues Less Expenses</b>	\$ 10,060	\$ -31,453	\$ 0	\$ 23,120	\$ 0

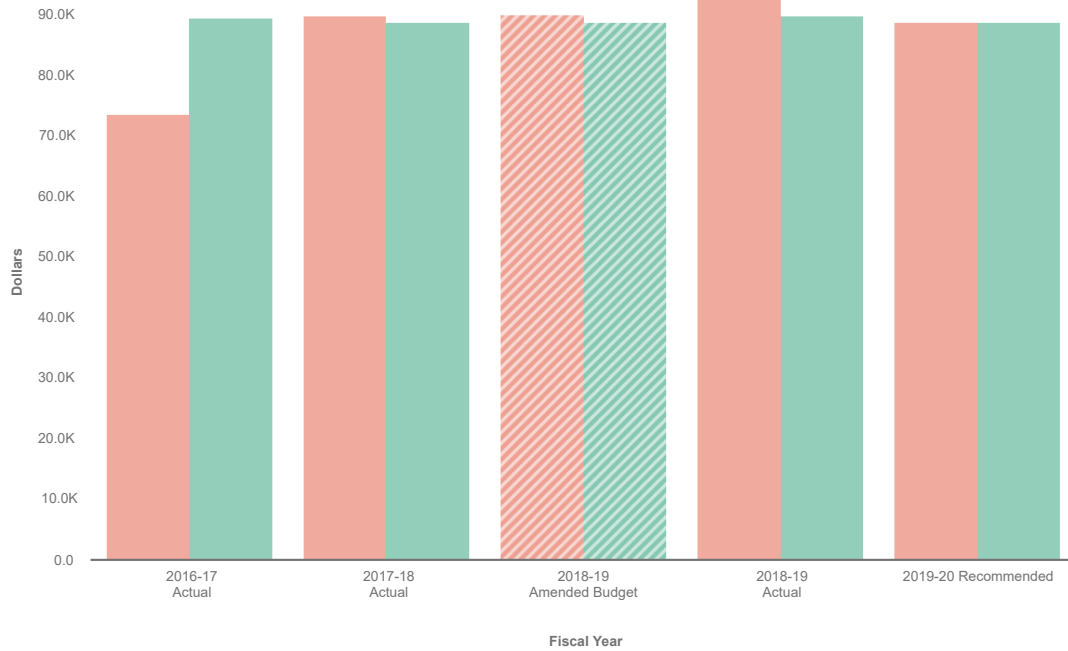
Data filtered by Types, OHV - Off-Highway Vehicle Fund and exported on July 5, 2019. Created with OpenGov

# Homeland Security Grant Program 142-22-440



Sort **Large to Small**

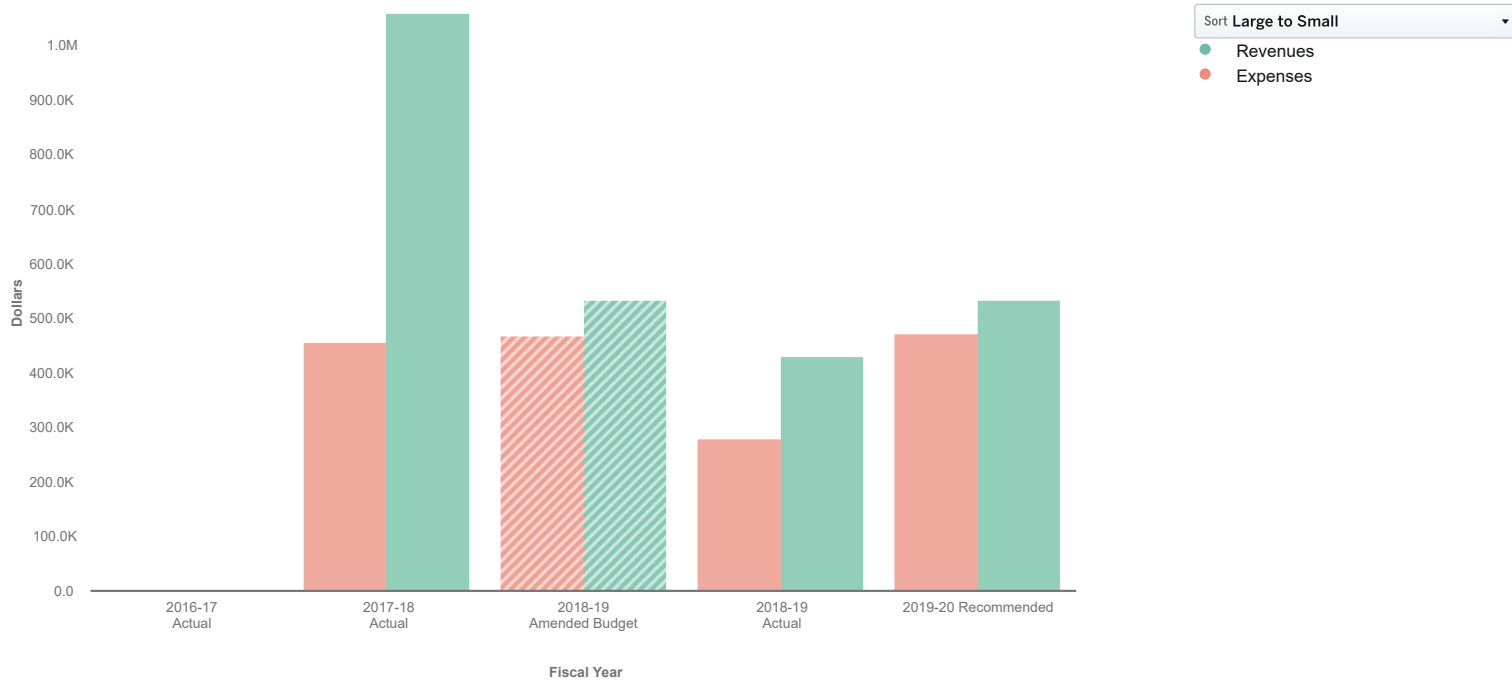
- Revenues
- Expenses



Collapse All	2016-17 Actual	2017-18 Actual	2018-19 Amended Budget	2018-19 Actual	2019-20 Recommended
▼ Expenses	\$ 73,426	\$ 89,752	\$ 89,990	\$ 95,100	\$ 88,712
▶ Services and Supplies	73,426	89,752	89,990	95,100	88,712
▼ Revenues	89,404	88,618	88,702	89,836	88,712
▶ Intergovernmental	89,404	88,618	88,702	89,836	88,712
<b>Revenues Less Expenses</b>	<b>\$ 15,978</b>	<b>\$ -1,134</b>	<b>\$ -1,288</b>	<b>\$ -5,264</b>	<b>\$ 0</b>

Data filtered by Types, SHERIFF - TERRORISM GRANT - OES and exported on July 5, 2019. Created with OpenGov

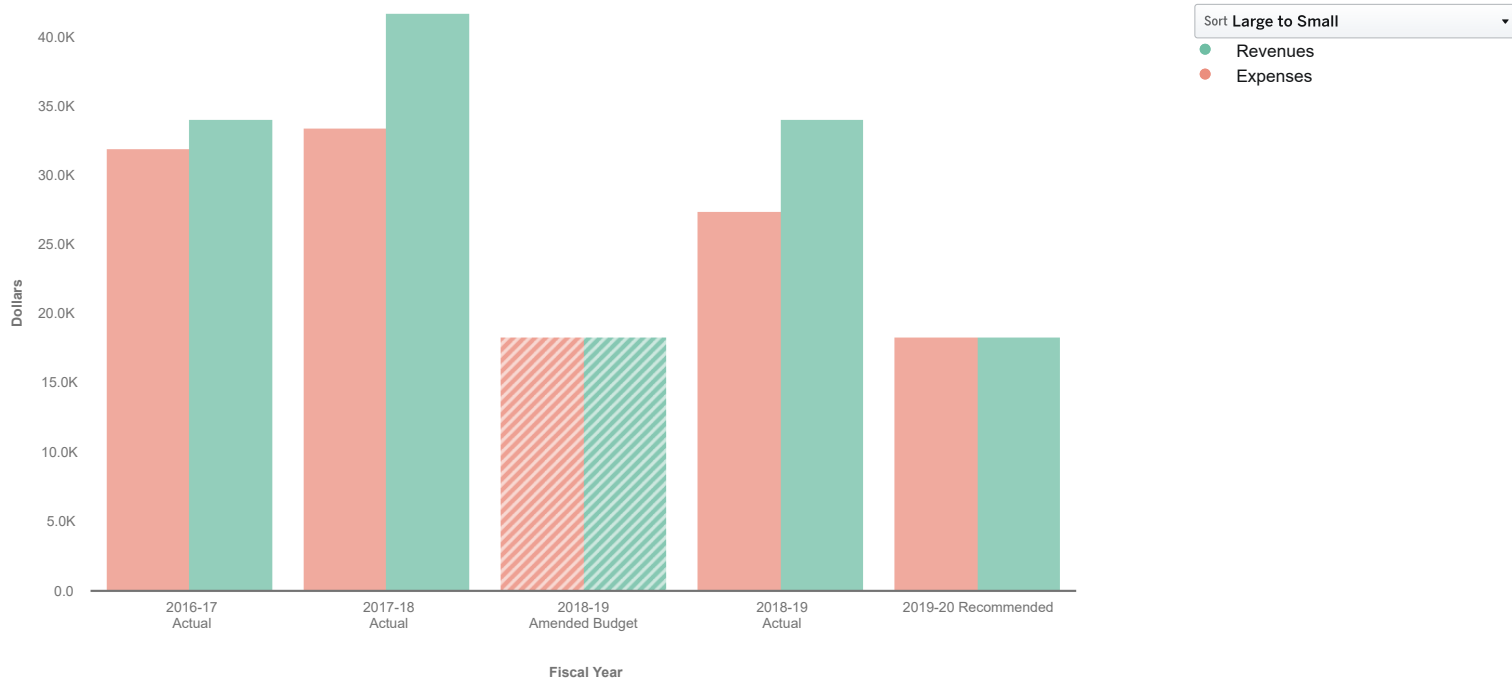
# 2011 Realignment - Court Security 146-22-455



Collapse All	2016-17 Actual	2017-18 Actual	2018-19 Amended Budget	2018-19 Actual	2019-20 Recommended
<b>Revenues</b>	\$ 0	\$ 1,057,116	\$ 533,686	\$ 429,591	\$ 533,686
▶ Intergovernmental	0	535,799	533,686	420,568	533,686
▶ Transfers In	0	519,875	0	0	0
▶ Interest & Rents	0	1,442	0	9,023	0
<b>Expenses</b>	0	456,367	468,748	278,728	471,834
▶ Transfers Out	0	456,367	468,748	278,728	471,834
<b>Revenues Less Expenses</b>	\$ 0	\$ 600,749	\$ 64,938	\$ 150,863	\$ 61,852

Data filtered by Types, Court Security 2011 Realignment and exported on July 5, 2019. Created with OpenGov

# Inmate Welfare Fund 720-23-000



Collapse All	2016-17 Actual	2017-18 Actual	2018-19 Amended Budget	2018-19 Actual	2019-20 Recommended
<b>▼ Expenses</b>	\$ 31,884	\$ 33,405	\$ 18,300	\$ 27,418	\$ 18,300
▶ <b>Services and Supplies</b>	15,212	33,405	18,300	27,418	18,300
▶ <b>Transfers Out</b>	16,673	0	0	0	0
<b>▼ Revenues</b>	34,025	41,576	18,300	34,019	18,300
▶ <b>Miscellaneous Revenues</b>	32,589	39,585	18,300	31,948	18,300
▶ <b>Interest &amp; Rents</b>	1,437	1,991	0	2,070	0
<b>Revenues Less Expenses</b>	\$ 2,141	\$ 8,171	\$ 0	\$ 6,601	\$ 0

Data filtered by Types, INMATE WELFARE TRUST and exported on July 5, 2019. Created with OpenGov