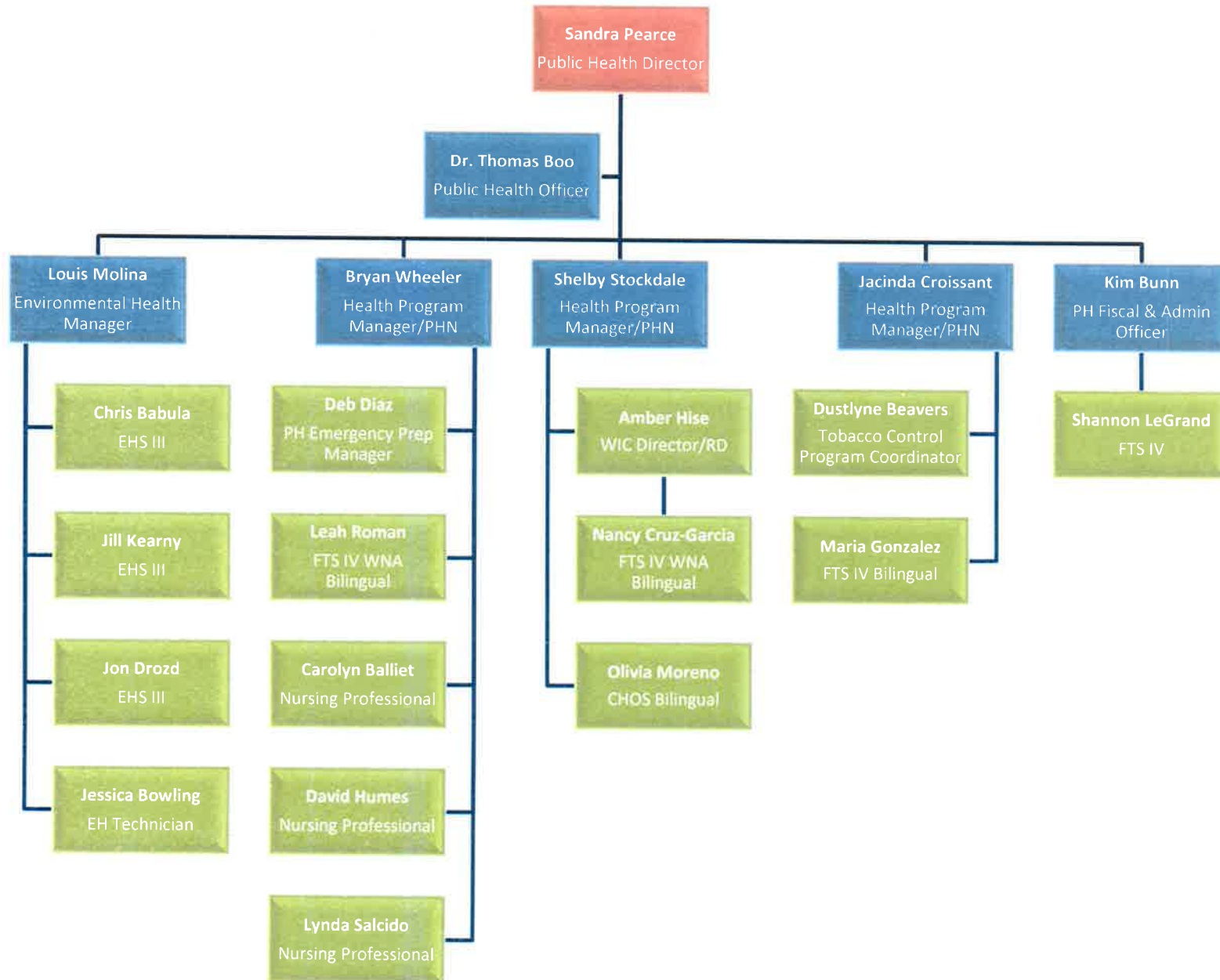


Mono County Health Department Organizational Chart

Fiscal Year 2019/20



PUBLIC HEALTH

Core Services

		Mandated?	
1	MONITOR HEALTH	Conduct community health needs assessments	Y
		Determine health service needs and gaps in care	Y
		Identify social and environmental threats to the health of the community	Y
		Identify community assets and resources	Y

		Mandated?	
2	DIAGNOSE & INVESTIGATE	Provide access to Public Health Labs	Y
		Infectious disease surveillance, investigation, and response to outbreaks	Y
		Plan for and respond to public health emergencies	Y
		Investigate foodborne outbreaks	Y

3	INFORM, EDUCATE, EMPOWER	Provide health promotion activities including flu clinics and smoking cessation support.	Y
		Collaborate on health education efforts with schools and local agencies	Y
		Send MonoGrams to inform the community about seasonal and ongoing public health issues	Y
		Provide accessible, bilingual, health information and resources via multiple media outlets	Y

4	MOBILIZE COMMUNITY PARTNERSHIPS	Build coalitions to bring together resources from the whole community	Y
		Health improvement planning efforts, programs, and projects	Y
		Convene partners to develop a community health improvement plan	Y
		Develop MOUs with other organizations to improve continuity of care	Y

5	DEVELOP POLICIES	Develop and track measurable objectives	Y
		Foster leadership at all levels	Y
		Develop policies and ordinances to improve public health	Y
		Advocate for legislation that supports public health and funding	Y

6	ENFORCE LAWS	Enforce sanitation codes	Y
		Protect drinking water supplies	Y
		Conduct timely inspections and response to complaints	Y
		Follow up on hazardous environmental exposures	Y

7	LINK TO SERVICES	Provide outreach and education for special populations	Y
		Provide culturally appropriate communication and materials	Y
		Refer and provide warm-hand offs to health & human services	Y
		Distribute mass quantities of antibiotics or vaccines in the event of an outbreak or bioterrorism related attack	Y

8	ASSURE COMPETENT WORKFORCE	Provide education, training, and evaluation	Y
		Provide monetary support and efficient procedures for license renewal	Y
		Provide public health nursing internships and training programs	Y
		Test emergency response plan during a mock event to evaluate performance.	Y

9	EVALUATE	Evaluate effectiveness of public health programs and services	Y
		Allocate resources and reshape programs or organizational structure	Y
		Monitor trends in disease rates to assess effectiveness of disease prevention activities	Y
		Monitor trends in risk behaviors to assess effectiveness of health promotion activities	Y

10	RESEARCH	Utilize best practices to guide work	Y
		Link with institutions of higher learning	Y
		Monitor rapidly changing disease prevention and health promotion research	Y
		Revise practices in order to remain current with recommended practices resulting from evidence based work	Y

Department Name	Division Name	Associated Goal	Tactic	Results	Internal or External	Target Completion (FY)
Public Health	Public Health	1B	Complete Health Officer standing order, training, and distribution of Naloxone through partnering agencies to community members.	Reduce incidence of overdose and death related to opioid use.	External	19-20
Public Health	Emergency Preparedness & Disease Prevention	1B	In conjunction with Behavioral Health, apply for, develop, and implement a county-wide syringe exchange program.	Reduce transmission of blood borne pathogens and link clients to harm reduction services for substance use treatment and prevention.	External	19-20
Public Health	Finance/Environmental Health	3D	Complete an Environmental Health Fee Assessment and take to the BOS for approval.	Collect appropriate level of fees for services provided by Mono County Environmental Health.	Both	19-20
Public Health	Public Health	4B	Participate in the development of a Community Health Improvement Plan (CHIP) based on the results from the Community Health Needs Assessment with Mammoth Hospital.	Community Health Improvement Plan (CHIP) is completed, and program planning to improve public health operational efficiency and customer service will be initiated.	Both	19-20
Public Health	Public Health	4B	Develop and distribute an Annual Health Department Update with 2019 highlights to be distributed during Public Health Week (1st week of April, 2020)	Annual Health Department Update is completed and distributed, increasing public awareness and transparency regarding the departments services and work.	Both	19-20

Health Department DEPARTMENT 847 and 860

DEPARTMENTAL OVERVIEW

Environmental and Public Health promote and protect the health of people and the communities where they live, learn, work and play. Through an upstream approach, Mono County Health Department strives to prevent people from getting sick or injured and promotes wellness by encouraging healthy behaviors. The 10 Essential Public Health Functions serve as a framework of how local, State and Federal mandates and core functions are upheld and implemented. Our mission is to promote and protect a Mono County culture of health and safety in the community and environment through outreach, education, and prevention. Our core values include wellness, integrity, respect, caring, excellence in quality and service, personal and professional growth, collaboration, and flexibility.

PROGRAMS AND SERVICES

PUBLIC HEALTH (Fund 130)

Environmental Health: promotes public health and facilitates disease prevention through oversight and guidance in the areas of water quality control, food safety, solid and liquid waste management, air quality control, hazardous materials and waste management, substandard housing mitigation, recreational swimming facilities and vector-borne disease surveillance.

Children's Medical Services (CMS): provides a comprehensive system of health care for children through preventive screening, diagnostic, treatment, rehabilitation, and follow-up services for targeted populations.

Communicable Disease Control: works to promptly identify, prevent and control infectious diseases that pose a threat to public health, including infectious diseases, vaccine-preventable agents, bacterial toxins, and pandemics.

HIV/AIDS/STD Programs: provides access to comprehensive prevention, diagnosis and treatment services for sexually transmitted diseases and HIV.

Immunization Program: protects the population against vaccine-preventable diseases.

Maternal, Child, & Adolescent Health (MCAH): promotes healthy living, reproductive health, family planning, and access to prenatal care for mothers and their families.

Woman, Infant, and Child (WIC) Program: helps income eligible families by providing nutrition education, breastfeeding support, vouchers for healthy foods, and referrals to healthcare and other community services.

HEALTH EDUCATION (Fund 131)

Tobacco Education Program: Partners with agencies, organizations, communities, and individuals to collaboratively improve health for Mono County residents and visitors through health promotion outreach to high risk populations, training and technical assistance, tobacco cessation, youth health promotion and risk prevention, health promotion through media, public health policy development and advocacy, and evaluation of outcomes.

BIO-TERRORISM (Fund 133)

Public Health Emergency Preparedness Program: Ensures a coordinated and effective response for the medical and health planning efforts during an emergency or disaster that impacts the health of our community. Works with local stakeholders, including healthcare providers and facilities, community-based organizations, law enforcement, fire personnel, emergency medical services, schools, volunteers, town and county governments, and many other entities.

DESCRIBE WHAT IS NOT INCLUDED IN THIS BUDGET

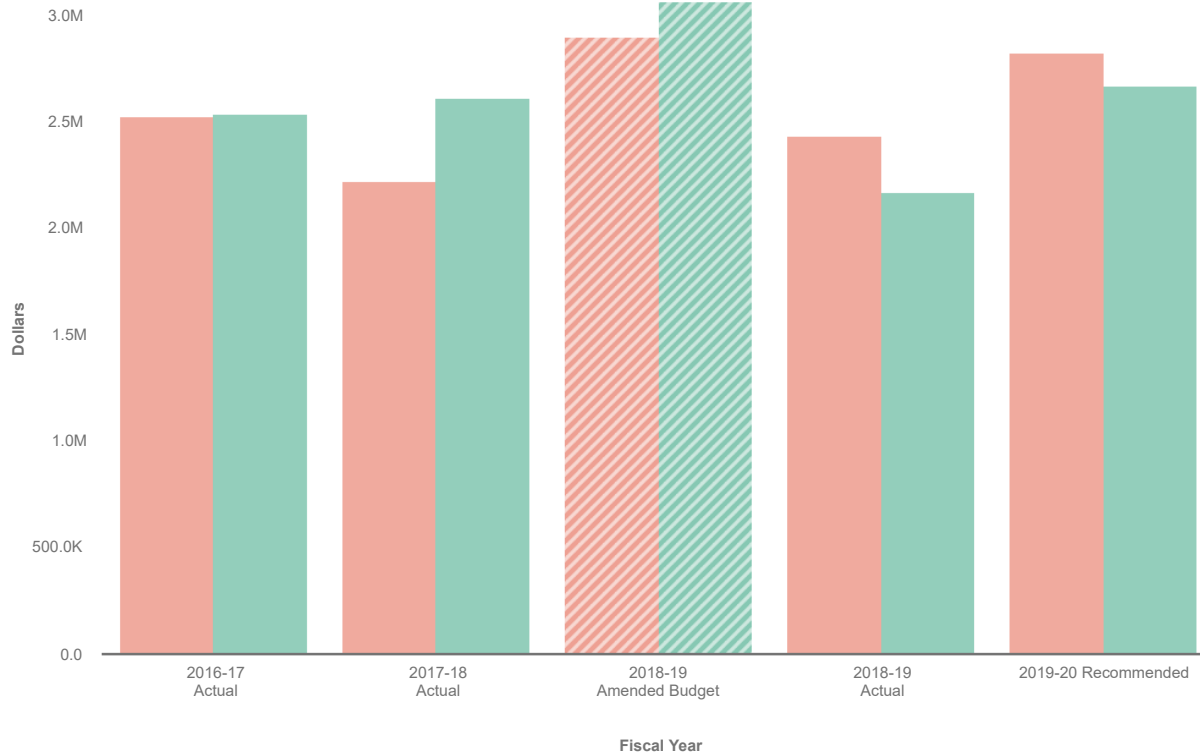
Use this section of the narrative to describe what items were not included in your budget at this time.

Public Health 130-41-860



Sort **Large to Small**

- Revenues
- Expenses



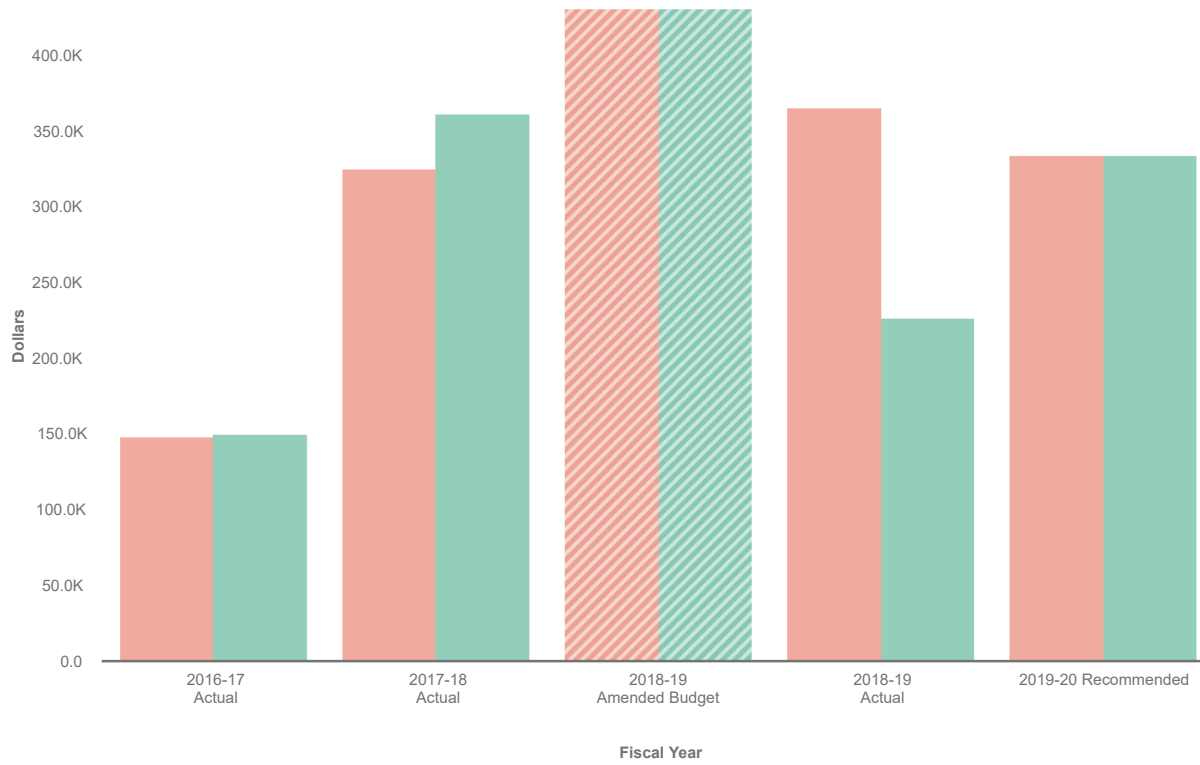
	2016-17 Actual	2017-18 Actual	2018-19 Amended Budget	2018-19 Actual	2019-20 Recommended
Collapse All					
▼ Revenues	\$ 2,535,556	\$ 2,610,051	\$ 3,059,644	\$ 2,169,315	\$ 2,669,428
▶ Intergovernmental	2,032,788	2,005,718	2,238,535	1,555,395	2,096,273
▶ Licenses, Permits & Franchises	274,524	286,791	276,052	423,468	277,691
▶ Charges for Services	212,964	272,681	288,010	160,827	263,614
▶ Miscellaneous Revenues	2,641	16,236	242,097	7,413	0
▶ Transfers In	9,219	22,932	10,000	12,174	24,350
▶ Interest & Rents	2,401	4,915	4,200	9,575	7,000
▶ Fines, Forfeitures & Penalties	1,019	778	750	464	500
▼ Expenses	2,523,507	2,223,613	2,900,360	2,436,040	2,823,318
▶ Salaries & Benefits	1,746,317	1,649,581	2,083,891	1,753,058	1,982,390
▶ Services and Supplies	745,939	574,031	755,669	682,982	773,157
▶ Transfers Out	31,251	0	60,800	0	67,770
Revenues Less Expenses	\$ 12,049	\$ 386,438	\$ 159,284	\$ -266,725	\$ -153,890

Public Health Education (Tobacco) 131-41-847



Sort **Large to Small** ▾

- Expenses
- Revenues



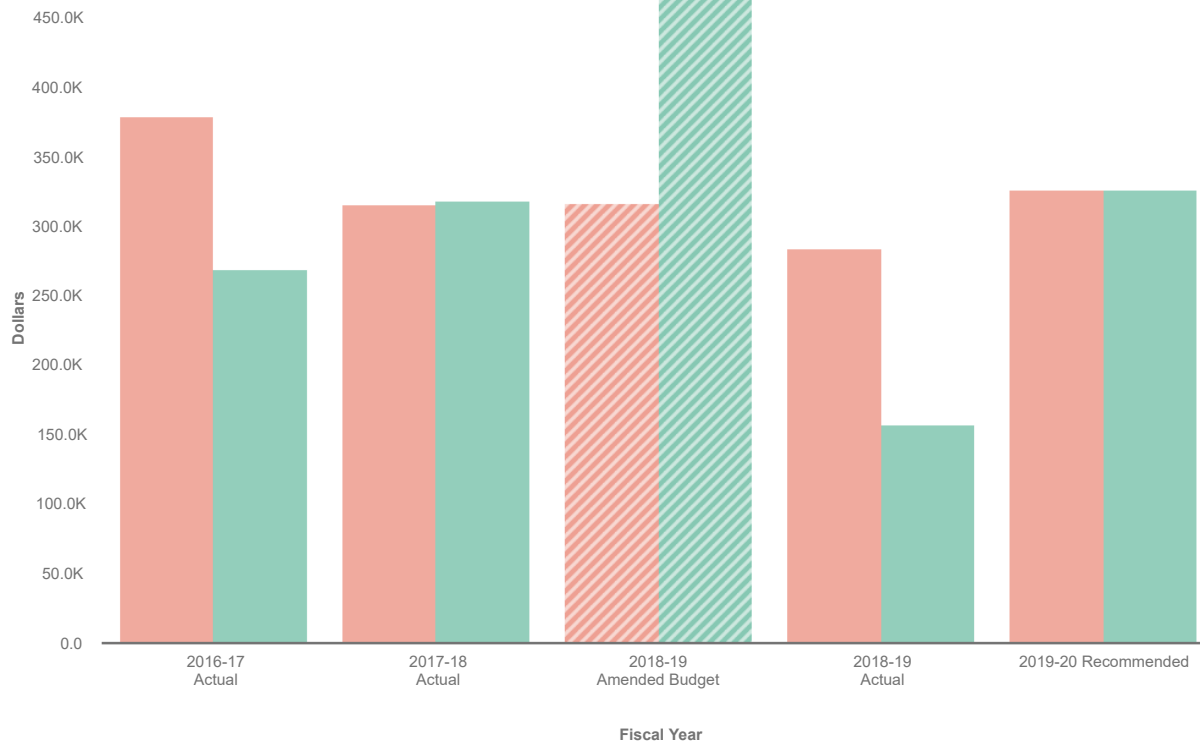
	2016-17 Actual	2017-18 Actual	2018-19 Amended Budget	2018-19 Actual	2019-20 Recommended
Collapse All					
▼ Expenses	\$ 148,473	\$ 326,017	\$ 430,662	\$ 365,648	\$ 334,561
▶ Salaries & Benefits	118,772	203,216	200,694	199,531	157,767
▶ Services and Supplies	29,700	122,801	229,968	166,117	176,794
▼ Revenues	150,149	362,097	430,662	227,063	334,561
▶ Intergovernmental	150,000	362,042	369,861	226,812	311,550
▶ Transfers In	0	0	60,801	0	23,011
▶ Interest & Rents	149	55	0	251	0
Revenues Less Expenses	\$ 1,676	\$ 36,080	\$ 0	\$ -138,585	\$ 0

Public Health - Bioterrorism Grants 133-41-860



Sort **Large to Small**

- Expenses
- Revenues



Collapse All	2016-17 Actual	2017-18 Actual	2018-19 Amended Budget	2018-19 Actual	2019-20 Recommended
▼ Revenues	\$ 269,660	\$ 319,037	\$ 469,110	\$ 157,760	\$ 326,189
▶ Intergovernmental	239,416	320,514	380,093	92,746	281,430
▶ Miscellaneous Revenues	0	0	89,017	66,488	0
▶ Transfers In	31,251	0	0	0	44,759
▶ Interest & Rents	-1,007	-1,477	0	-1,474	0
▼ Expenses	379,182	315,581	316,982	284,228	326,189
▶ Salaries & Benefits	280,003	233,870	210,083	205,010	251,773
▶ Services and Supplies	99,178	59,409	101,106	79,218	74,416
▶ Capital Outlay	0	22,302	5,793	0	0
Revenues Less Expenses	\$ -109,522	\$ 3,456	\$ 152,128	\$ -126,468	\$ 0